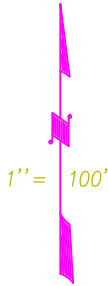


POR. SEC. 4, T. 22 N., R. 12 E., M.D.B.&M.

Tax Rate Area  
53-069

129-04

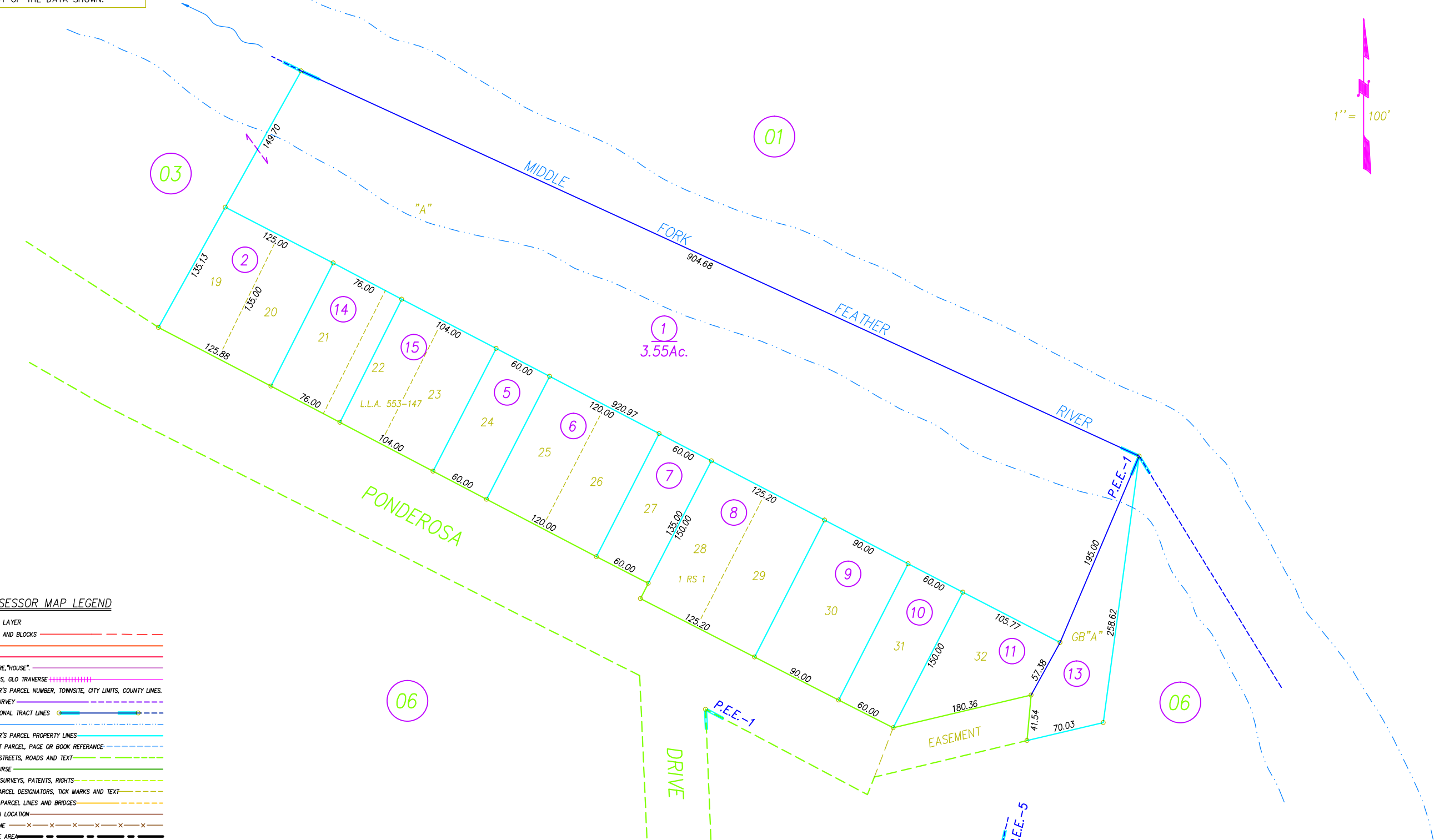
NOTE: ALL INFORMATION SHOWN ON ASSESSOR  
PARCEL MAPS ARE FOR ASSESSOR'S OFFICE USE  
AND DO NOT NECESSARILY CONSTITUTE LEGAL  
LOTS. NO LIABILITY IS ASSUMED FOR THE  
ACCURACY OF THE DATA SHOWN.



COLOR	LAYER
RED	SECTIONS AND BLOCKS
ORANGE	UTILITIES
YELLOW	AIRPORT
GREEN	STRUCTURE, "HOUSE"
BLUE	RAILROADS, GLO TRAVERSE
PURPLE	ASSESSOR'S PARCEL NUMBER, TOWNSITE, CITY LIMITS, COUNTY LINES
PINK	FLOOD SURVEY
TEAL	SUBDIVISIONAL TRACT LINES
CYAN	WATER
BLUE	ASSESSOR'S PARCEL PROPERTY LINES
ORANGE	ADJACENT PARCEL, PAGE OR BOOK REFERENCE
GREEN	HIWAYS, STREETS, ROADS AND TEXT
BROWN	GOLF COURSE
YELLOW	MINERAL SURVEYS, PATENTS, RIGHTS
ORANGE	LOT & PARCEL DESIGNATORS, TICK MARKS AND TEXT
BROWN	ALTERED PARCEL LINES AND BRIDGES
BROWN	MOUNTAIN LOCATION
BROWN	FENCE LINE
BLACK	TAX RATE AREA
BLACK	DIMENSIONAL TEXT

ASSESSOR MAP LEGEND

RED  
ORANGE  
YELLOW  
GREEN  
BLUE  
PURPLE  
PINK  
TEAL  
CYAN  
BLUE  
ORANGE  
GREEN  
BROWN  
YELLOW  
ORANGE  
BROWN  
BROWN  
BROWN  
BLACK



Assessor's Parcel Numbers Shown in Circles.  
Assessor's Block Numbers Shown in Ellipses.

Book 129, Page 04  
Plumas County Assessor's Map