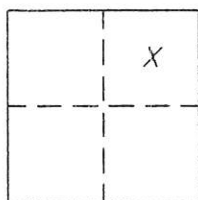


## CORNER RECORD

Document Number 255

Portion Section 36, T.23N.R.13E. MDM

County of Plumas, CaliforniaBrief Legal Description Portion of Block 29, Northern Addition per 8 RS 141

## CORNER TYPE

Government Corner ☐ Control ☐  
 Meander ☐ Property ☒  
 Rancho ☐ Other ☐  
 Date of Survey Sept. 22, 2003

COORDINATES  
(Optional)

N. \_\_\_\_\_  
 E. \_\_\_\_\_  
 Zone \_\_\_\_\_ Datum \_\_\_\_\_  
 Elev. \_\_\_\_\_

Corner— Left as found ☐ Found and tagged ☐ Established ☐ Reestablished ☒ Rebuilt ☐

Identification and type of corner found: Evidence used to identify or procedure used to establish or reestablish the corner:  
Found points as indicated in good condition.

A description of the physical condition of the monument as found and as set or reset:  
Set 5/8" rebar with Aluminum caps stamped LS 2843 as indicated on attached sketch.

## SURVEYOR'S STATEMENT

This Corner Record was prepared by me or under my direction in conformance with the Land Surveyors' Act on September 22), 2003.

Signed John W. Hamby L.S. 2843  
 John W. Hamby



## COUNTY SURVEYOR'S STATEMENT

This Corner Record was received 1/15/04 ~~2003~~ and 2004

examined and filed 1/27/04 ~~2003~~ 2004

Signed R. Tom Hunter Title Plumas Co. Engineer



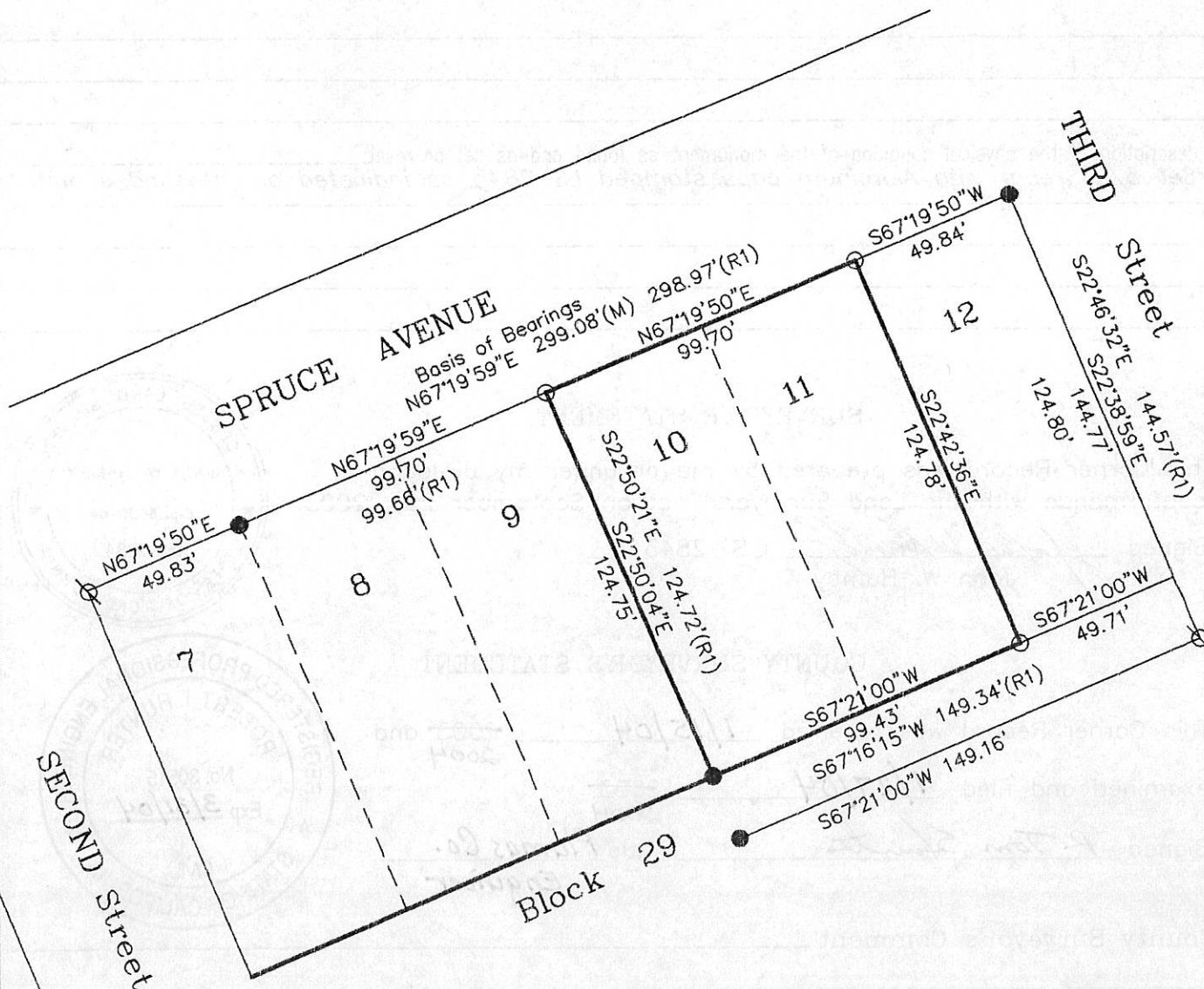
County Surveyor's Comment \_\_\_\_\_

- FOUND 5/8" Rebar with Plastic Cap LS 2843
  - ⊗ FOUND 5/8" rebar
  - SET 5/8" Rebar & Aluminum Cap LS 2843
- (R1) RECORD per 8 RS 141



## Portion Block 29 Second North Addition

Portola Plumas County Ca.  
Scale 1" = 50' Sept. 2003



03260

Hamby Surveying Inc.  
P.O. Box 1209  
Portola, CA 96122  
(530) 832-5571