

## **BOARD OF SUPERVISORS**

Michael Sanchez, Vice Chair 1<sup>st</sup> District  
Kevin Goss, 2<sup>nd</sup> District  
Sharon Thrall, 3<sup>rd</sup> District  
Lori Simpson, 4<sup>th</sup> District  
Jeff Engel, Chair 5<sup>th</sup> District

**AGENDA FOR REGULAR MEETING OF MARCH 13, 2018 TO BE HELD AT 11:00 A.M.  
IN THE BOARD OF SUPERVISORS ROOM 308, COURTHOUSE, QUINCY, CALIFORNIA**

**[www.countyofplumas.com](http://www.countyofplumas.com)**

### **AGENDA**

The Board of Supervisors welcomes you to its meetings which are regularly held on the first three Tuesdays of each month, and your interest is encouraged and appreciated.

Any item without a specified time on the agenda may be taken up at any time and in any order. Any member of the public may contact the Clerk of the Board before the meeting to request that any item be addressed as early in the day as possible, and the Board will attempt to accommodate such requests.

Any person desiring to address the Board shall first secure permission of the presiding officer. For noticed public hearings, speaker cards are provided so that individuals can bring to the attention of the presiding officer their desire to speak on a particular agenda item.

Any public comments made during a regular Board meeting will be recorded. The Clerk will not interpret any public comments for inclusion in the written public record. Members of the public may submit their comments in writing to be included in the public record.

**CONSENT AGENDA:** These matters include routine financial and administrative actions. All items on the consent calendar will be voted on at some time during the meeting under "Consent Agenda." If you wish to have an item removed from the Consent Agenda, you may do so by addressing the Chairperson.



**REASONABLE ACCOMMODATIONS:** In compliance with the Americans with Disabilities Act, if you need special assistance to participate in this meeting please contact the Clerk of the Board at (530) 283-6170. Notification 72 hours prior to the meeting will enable the County to make reasonable arrangements to ensure accessibility. Auxiliary aids and services are available for people with disabilities.

## STANDING ORDERS

11:00 A.M. CALL TO ORDER/ROLL CALL

### PLEDGE OF ALLEGIANCE

### ADDITIONS TO OR DELETIONS FROM THE AGENDA

### PUBLIC COMMENT OPPORTUNITY

Matters under the jurisdiction of the Board, and not on the posted agenda, may be addressed by the general public at the beginning of the regular agenda and any off-agenda matters before the Board for consideration. However, California law prohibits the Board from taking action on any matter which is not on the posted agenda unless it is determined to be an urgency item by the Board of Supervisors. Any member of the public wishing to address the Board during the "Public Comment" period will be limited to a maximum of 3 minutes.

### DEPARTMENT HEAD ANNOUNCEMENTS/REPORTS

Brief announcements by, or brief reports on their activities by County Department Heads

## ACTION AGENDA

### 1. CONSENT AGENDA

These items are expected to be routine and non-controversial. The Board of Supervisors will act upon them at one time without discussion. Any Board members, staff member or interested party may request that an item be removed from the consent agenda for discussion. Additional budget appropriations and/or allocations from reserves will require a four/fifths roll call vote.

#### A) BOARD OF SUPERVISORS

Approve and authorize the Chair to sign letter to the Department of Transportation (Caltrans) for encroachment permit (Almanor Recreation & Park District: 36<sup>th</sup> Annual Mile High 100), June 16, 2018, Chester, CA

#### B) SOLID WASTE

Adopt **RESOLUTION** to Cal Recycle authorizing Submittal of Application for the Cal Recycle Household Hazardous Waste Grant

#### C) PUBLIC WORKS

Adopt **RESOLUTION** Establishing the 2017 Mileage of Maintained County Roads

#### D) FACILITY SERVICES

Approve and authorize the Chair to sign Service Agreement with Heat Transfer Systems, not to exceed \$12,329.80, to replace HVAC at the Quincy Library; approved as to form by County Counsel

#### E) SOCIAL SERVICES

- 1) Authorize Social Services to recruit and fill vacant, funded and allocated 1.0 FTE Eligibility Specialist III position
- 2) Approve and authorize the Director of Social Services to sign Test Rental and Use Agreement for California Merit System Services Program Participants; approved as to form by County Counsel

#### F) CLERK-RECORDER

Authorize the Clerk-Recorder to recruit and fill funded and allocated 1.0 FTE Lead Deputy Clerk-Recorder position, created by promotion, effective June 30, 2018

**G) PUBLIC HEALTH AGENCY**

Approve and authorize the Chair to sign Agreement Number PARTC1819UCD with the University of California Davis Campus, not to exceed \$12,800, related to the Ryan White PART C Program for Fiscal Year 2018-2019; approved as to form by County Counsel

**SPECIAL DISTRICTS GOVERNED BY BOARD OF SUPERVISORS**

The Board of Supervisors sits as the Governing Board for various special districts and county service areas in Plumas County including Dixie Valley Community Services District; Walker Ranch Community Services District; Plumas County Flood Control and Water Conservation District; Quincy Lighting District; Crescent Mills Lighting District; County Service Area #12.

**Convene as the Flood Control & Water Conservation District Governing Board**

**2. FLOOD CONTROL & WATER CONSERVATION DISTRICT – Robert Perreault**

Approve supplemental budget transfer of \$39,000 to increase Operations Expense (527900) and Chester Diversion Dam Expense (528500) using projected Fund Balance as of June 30, 2018; **four/fifths required roll call vote**

**Adjourn as the Flood Control & Water Conservation District Governing Board and reconvene as the Board of Supervisors**

**3. DEPARTMENTAL MATTERS**

**A) PUBLIC WORKS – Robert Perreault**

Presentation of Lee Road Safety Improvement Project; Introduce and waive first reading of an **ORDINANCE** Amending Sections of Chapter 3 of Title 4 of the Plumas County Code Concerning Parking on Lee Road. **Roll call vote**

**B) DISTRICT ATTORNEY – David Hollister**

Authorize the District Attorney to hire above the “B” Step for the position of Legal Services Assistant I/II; discussion and possible action

**C) PUBLIC HEALTH AGENCY – Andrew Woodruff**

Appropriate \$10,000 from the General Fund Contingency to Budget Unit 20480 (Senior Transportation) to cover retirement payout; **four/fifths required roll call vote**

**D) FACILITY SERVICES & AIRPORTS – Kevin Correia**

- 1) Approve budget transfer of \$14,365.56 to zero out accounts that were under budgeted for FY 2016-2017; discussion and possible action
- 2) Approve supplemental budget transfer of \$9,140 to cover costs for Sierra House project to be reimbursed by Behavioral Health; discussion and possible action

**E) HUMAN RESOURCES – Nancy Selvage**

Authorize Human Resources to begin recruitment to fill 1.0 FTE Director of Public Health; 1.0 FTE Behavioral Health Director; and 1.0 FTE Behavioral Health Deputy Director; discussion and possible action

#### **4. BOARD OF SUPERVISORS**

- A. Approve and authorize the Chair to sign Public Defender Contract between County of Plumas and Attorney Craig Osborne, for Attorney's Services Rendered Under Court Appointment, replacing Attorney Doug Prouty; discussion and possible action
- B. Correspondence
- C. Weekly report by Board members of meetings attended, key topics, project updates, standing committees and appointed Boards and Associations
- D. Appointments  
**FAR NORTHERN COORDINATING COUNCIL**  
Re-appoint Deborah Anderson to the Far Northern Coordinating Council on Developmental Disabilities, as recommended

#### **5. CLOSED SESSION**

##### **ANNOUNCE ITEMS TO BE DISCUSSED IN CLOSED SESSION**

- A. Personnel: Public employee performance evaluation – Fair Manager (Board only)
- B. Personnel: Public employee appointment or employment – Legal Services Assistant I/II
- C. Conference with Legal Counsel: Significant exposure to litigation pursuant to Subdivision (d)(2) of Government Code Section 54956.9
- D. Conference with Labor Negotiator regarding employee negotiations: Sheriff's Administrative Unit; Sheriff's Department Employees Association; Operating Engineers Local #3; Confidential Employees Unit; Probation; Unrepresented Employees and Appointed Department Heads

##### **REPORT OF ACTION IN CLOSED SESSION (IF APPLICABLE)**

#### **ADJOURNMENT**

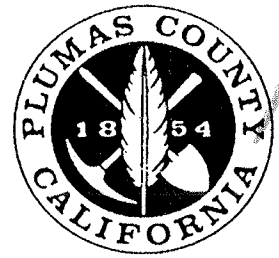
Adjourn meeting to Tuesday, March 20, 2018, Board of Supervisors Room 308, Courthouse, Quincy, California.



# BOARD OF SUPERVISORS

---

MICHAEL SANCHEZ, DISTRICT 1  
KEVIN GOSS, DISTRICT 2  
SHARON THRALL, DISTRICT 3  
LORI SIMPSON, DISTRICT 4  
JEFF ENGEL, DISTRICT 5



March 13, 2018

Department of Transportation (Caltrans)  
Attn: Permits Engineer  
1000 Center Street  
Redding, CA 96001

Attention: Permits Engineer

**Subject: Encroachment Permit Request**  
**ALMANOR RECREATION & PARK DISTRICT**  
36<sup>TH</sup> Annual Mile High 100, June 16, 2018, Chester, CA

This letter acknowledges that the Plumas County Board of Supervisors has been notified of the above captioned event. The Board of Supervisors has no objection to issuance of an event permit by Caltrans.

Sincerely,

Jeff Engel, Chair

Cc: Plumas County Director of Public Works

**PLUMAS COUNTY  
DEPARTMENT OF PUBLIC WORKS  
SOLID WASTE DIVISION**

1834 EAST MAIN STREET • QUINCY, CA 95971 • (530) 283-6268  
*Robert A. Perreault, Jr., P.E.*                      *Director of Public Works*




**CONSENT AGENDA REQUEST**

For the March 13, 2018 meeting of the Plumas County Board of Supervisors

March 5, 2018

To:                      Honorable Board of Supervisors

From:                  Robert Perreault, Director of Public Works 

Subject:              Resolution to CalRecycle Authorizing Submittal of Application for the  
CalRecycle Household Hazardous Waste Grant

**Background:**

The Department of Public Works, through its Solid Waste Division and the solid waste franchise contracts, administers the County's Household Hazardous Waste (HHW) programs for collection by the County Franchise Contractors.

Effective for the FY 2018/19 funding cycle, CalRecycle is requiring applicant Counties to submit a Board of Supervisors-approved resolution, authorizing the Department to apply for the grant.

The attached draft Resolution sets forth the Board of Supervisors support for the CalRecycle Household Hazardous Waste Program and authorizes the Director of Public Works to execute any program-related documents for an a period of five (5) years from the date of adoption.

The attached resolution has been approved as to form by County Counsel.

**Recommendation:**

The Public Works Department respectfully recommends that the Board of Supervisors approve the attached draft Resolution and authorize signature by the Chair.

Plumas County, California  
RESOLUTION NO. 18 – \_\_\_\_\_

**RESOLUTION TO CALRECYCLE AUTHORIZING SUBMITTAL OF APPLICATION FOR  
HOUSEHOLD HAZARDOUS WASTE GRANT AND RELATED AUTHORIZATIONS**

**WHEREAS**, pursuant to Public Resources Code, Division 30, Part 7, Article 3.5, Section 47200, the Department of Resources Recycling and Recovery (CalRecycle) has established primarily competitive Household Hazardous Waste (HHW) grants available to qualifying jurisdictions to establish or expand HHW collection programs; and

**WHEREAS**, in furtherance of this authority CalRecycle administers grant programs to provide opportunities for the local governments in implementing safe Household Hazardous Waste (HHW) programs for collection, public education, source reduction, reuse, and/or recycling of HHW; and

**WHEREAS**, CalRecycle's procedures for administering grant programs require, among other things, an applicant's governing body to declare by resolution certain authorizations related to the administration of the HHW grant program.

**NOW, THEREFORE, BE IT RESOLVED** that the Plumas County Board of Supervisors authorizes the submittal of an application to CalRecycle for any and all HHW grant programs offered; and

**BE IT FURTHER RESOLVED** that the Director of Public Works, or his/her designee, is hereby authorized as Signature Authority to execute any and all HHW program-related documents necessary to implement and fulfill projects for which a grant may be awarded; and

**BE IT FURTHER RESOLVED** that this authorization is effective for an additional five (5) years from the date of adoption, or until rescinded by the Signature Authority or this governing body, whichever occurs first.

The foregoing Resolution was duly passed and adopted by the Board of Supervisors of the County of Plumas, State of California, at a regular meeting of said Board held on the 13<sup>th</sup> day of March 2018, by the following vote:

**AYES: SUPERVISORS:**

**NOES: SUPERVISORS:**

**ABSTAIN/ABSENT: SUPERVISORS:**

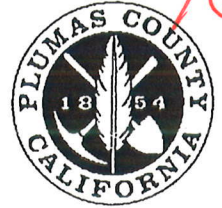
\_\_\_\_\_  
Chair of the Board of Supervisors

**ATTEST:**

\_\_\_\_\_  
Clerk of the Board of Supervisors

# PLUMAS COUNTY • DEPARTMENT OF PUBLIC WORKS

1834 East Main Street, Quincy, CA 95971 – Telephone (530) 283-6268 – Facsimile (530) 283-6323  
Robert A. Perreault, Jr., P.E., Director Joe Blackwell, Deputy Director



## CONSENT AGENDA REQUEST

For the March 13, 2018 meeting of the Plumas County Board of Supervisors

March 05, 2018

To: The Honorable Board of Supervisors

From: Robert Perreault, Director of Public Works

A blue ink signature of Robert Perreault, written over the name in the "From:" line.

Subject: To Adopt Resolution, Establishing the 2017 Plumas County Maintained Mileage.

### Discussion:

Each year, The Public Works Department is required to submit a tabulation to the State to indicate the mileage that is maintained by the Plumas County Road Department. This mileage is used in the calculation of Gas Tax funds and other State funding sources for the Road Department.

The necessary updates have been completed and the attached resolution is ready for your approval.

Please note that this year's maintained mileage total is **681.501** miles.

The above maintained mileage includes the recently accepted mileage pertaining to the Graeagle Unit 9 Subdivision, as set forth in Resolution 18-8304.

A complete copy of the "2017 Plumas County Maintained Road Data" is on file with the Clerk of the Board of the Supervisors and at the Public Works Headquarters Building for public review during normal office hours.

Attached is a copy of the draft Resolution, for consideration by the Board of Supervisors.

The attached Resolution has been approved as to form by County Council

### Recommendation:

Public Works staff respectfully recommends that the Board of Supervisors adopts the attached resolution

Attached: Draft Resolution

**RESOLUTION NO. 18-**

(Establishing Mileage of Maintained County Roads)

**WHEREAS**, Section 2121 of the Streets and Highways Code of the State of California provides that in May of each year each County shall submit to the California Department of Transportation any additions or exclusions from its mileage of maintained County roads, specifying the termini and mileage of each route added or excluded; and

**WHEREAS**, the California Department of Transportation certified to the State Controller in June 2016 that the total mileage of maintained county roads is 679.553 miles; and

**WHEREAS**, The County of Plumas now finds the total mileage of maintained County roads is **681.501** miles;

**NOW, THEREFORE, BE IT RESOLVED** by the Board of Supervisors of the County of Plumas, State of California, that the mileage of maintained County roads is now **681.501** miles, as indicated on the list titled "2017 Plumas County Maintained Road Data", which is attached hereto and hereby made, by reference, a part of this resolution.

The foregoing Resolution was duly passed and adopted by the Board of Supervisors of the County of Plumas, State of California, at a regular meeting of said Board held on the 26th day of March, 2018, by the following vote:

**AYES:**            **SUPERVISORS:**

**NOES:**           **SUPERVISORS:**

**ABSTAIN/ABSENT:**      **SUPERVISORS:**

\_\_\_\_\_  
Chair of the Board of

Supervisors  
**ATTEST:**

\_\_\_\_\_  
Clerk of the Board of Supervisors

Approved as to form:



Gretchen Stuhr  
Deputy Plumas County Counsel

2/27/2018

2017 PLUMAS COUNTY  
MAINTAINED ROAD DATA

Alphabetical

GROUP SEQUENCE	ROAD NUMBER	ROAD SEGMENT	ROAD NAME	FROM	NAME	[NUMBER AND	TO	AND NAME]	[NUMBER	LENGTH MILES	OTHER AREA	MAP NUMBER	MAP COORDINATE	REMARKS	MILEAGE FROM TABS	CONSTRUCTED	NON COUNTY
1	313	A13	ABETT LN	SH036			SH147			3.790		07E24	04F		3790		
2	EQ27	ABERNETHY LN	SH070				END			0.381		07F15	07D		381		
2	PL05	ADA CIR	PL03	ADA LN			END			0.114		08F11	09J		114		
2	PL03	ADA LN	PL02	SPANISH VIEW DR			END			0.040		07F15	08D		40		
2	PE15	ALDER CT	PE14	SEQUOIA DR			END			0.190		07F15	08D		190		
2	QU32	ALDER CT	QU26	ALDER ST			END			0.042		08F34	08E		42		
2	CM07	ALDER ST	CM05	WILLOW ST			END			0.050		08F11	08F		50		
2	QU26	ALDER ST	QU04	EAST HIGH ST			END			0.100		08E41	08J		100		
2	CH64	ALDON DR	SH036				END			0.310		08F11	08J		310		
1	310	5	ALMANOR DR WEST	SH089 (east)			END			1.700		07E23	05F		190		
1	310	10	ALMANOR DR WEST	LAS NF BDRY			END			0.550		07E34	04B		1700		
1	310	15	ALMANOR DR WEST	305 PRIVL BUT RSVR R			END			0.550		07E34	04C		550		
1	310	20	ALMANOR DR WEST	LAS NF BDRY			END			0.600		07E34	05D		600		
2	EQ03	ALTA AVE	SH089 (north)	SH070			END			1.200		07E34	06E		1200		
1	218	ALTA CAMP RD	SH089 (north)	SH089 (south)			END			0.100		08F11	08K		100		
1	432	AMERICAN WAY	406 QUINCY JCT RD				END			0.230		08E41	02E		230		
2	CH55	ANDREWS RD	CH13	FIRST AVE			END			0.558		08F11	05K		558		
2	TV01	ANNE ST	207				END			0.379		07E23	05G		379		
1	111B	ANTELOPE RD	PLU NF BDRY				END			0.160		08E52	01F		160		
1	111B	ANTELOPE ROAD	111A GEN INDN CR RD				END			0.131		08E	09F		131		
2	GE03	APACHE TRAIL	GE01 IROQUOIS TRL (north)				END			0.308		08E	09F		308		
2	JV03	ARASTRA ST	506C				END			0.210		08F34	09H		210		
2	AP06	ARBLUTUS DR	AP01 PONDEROSA DR				END			0.323		08F34	09A		323		
2	LP01	ARISTOCRACY DR	511 MAIN ST				END			0.130		07E24	07G		130		
1	207	1	ARLINGTON RD	SH089			END			0.246		08F41	08B		246		
2	DE04	ARRIBA AVE	DE01 DELLEKER RD				END			4.460		08E41	10H		4460		
2	PV07	ASHLEY AVE	310 ALMANOR DR WEST				END			0.430		08E52	01F		430		
2	CH24	ASPEN ST	SH036				END			0.260		09F31	03A		260		
2	GV01	AYOUB ALLEY	SH089 (west)				END			0.040		07E34	05E		40		
2	CM10	BACHER ST	CM01 SCHOOL ST				END			0.260		07E23	04G		260		
2	BC08	BAILEY CREEK DR	BC12 DINSMORE DR				END			0.228		08E41	04E		228		
2	QU41	BAKER WAY	QU03 JACKSON ST				END			0.035		08E41	09J		35		
1	406A	BARLOW	SH070				END			0.873		07E24	05F		873		
1	111	1	BCKWRTH GENESE RD	SH070			END			0.062		08F11	08F		62		
1	111	1	BCKWRTH GENESE RD	PLU NF			END			0.120		08F11	03G		120		
1	108	1	BCKWRTH LY/LTN RD	SH070			END			28.380		08F	04C		28380		
2	PH03	BEAR WAY	107 DYSON LN				END			2.500		09F32	02C		2500		
1	109	BECKWORTH CALP RD	127 PLUMAS AVE				END			4.320		09F32	08H		4320		
2	BW06	BECKWORTH ST	SH070				END			0.049		09F31	03C		49		
1	303	BELDEN TOWN RD	BW02 MYRTLE ST				END			8.630		09F32	02A		8630		
1	405A	BELL LN	SH070				END			0.120		09F32	02C		120		
2	DE05	BELLA VISTA DR	406 QUINCY JCT RD				END			0.470		07E1	02B		470		
2	BE07	BELLAMY LN	DE01 DELLEKER RD				END			0.950		08F11	06H		950		
1	409	BESKEEN LN	411				END			0.620		08F35	03K		620		
2	GV08	BIDWELL ST	SH070				END			0.100		08F11	08D		100		
1	323A	BIG COVE RD	112				END			1.050		08F11	07E		1050		
1	423	BIG CREEK RD	323 CLIFFORD DR				END			0.100		08E41	03E		100		
1	314	BIG SPRGS CO RD	414 BUCKS LAKE RD (west)				END			0.902		07E24	06G		902		
1	321	BIG SPRINGS RD	313 A 13				END			9.537		07F1	02B		9537		
2	CH62	BLACK OAK DR	313 A 13 (west)				END			3.440		07E24	07K		3440		
1	420	BLACKHAWK RD	CH51 WILLHOITE RD				END			2.000		07E24	07J		2000		
1	521	BLAIRSDEN GRAEAGLE	SH070				END			0.496		07E23	05F		496		
2	EQ39	BLUE ROSE CT	SH089				END			1.212		08F11	03F		1212		
			405A BELL LN				END			1.000		08F34	08H		1000		
							END			0.024		08F11	06H		24		

2017 PLUMAS COUNTY  
MAINTAINED ROAD DATA

Alphabetical

GROUP SEQUENCE	ROAD NUMBER	ROAD SEGMENT	ROAD NAME	FROM	[NUMBER AND NAME]	TO	[NUMBER AND NAME]	LENGTH MILES	OTHER AREA	MAP NUMBER	MAP COORDINATE	REMARKS	MILEAGE FROM TABS	UN CONSTRUCTED	NON COUNTY
1	521	10	BONTA ST	521 BLRSDEN GRAEAGLE		SH089		0.500	08F34	07J			500		
2	QU23		BOYLE ST	QU24 FOOHILL WY		QU26 ALDER ST		0.100	08F11	08F			100		
2	QU01		BRADLEY ST	SH070 LAWRENCE ST		QU03 JACKSON ST		0.128	08F11	08E			128		
2	PE22		BRAIN DR	PE20 EUREKA SPRINGS DR		END		0.060	08F34	7E			60		
2	CH37		BRENTWOOD DR	CH38 EDGEWOOD DR		END		0.210	07E23	04G			210		
2	EQ35		BRESCIANI CIR	405 LEE RD (west)		405 LEE RD (east)		0.379	08F11	07H			379		
2	EQ36		BRESCIANI LN	405A BELL LN		END		0.131	08F11	07J			131		
2	JV05		BRIDE ST	END (north)		END (south)		0.089	08F34	09A			89		
2	CH06		BRIDGE ST	CH11 MELISSA AVE		CH08 FROST AVE		0.190	07E23	03G			190		
2	417		BTFLY VLY TWIN RD	SH070		326 TWIN ST. RD		8.340	08E51	10D			8340		
2	QU07		BUCHANAN ST	411		QU21 EDWARDS AVE		0.200	08F11	08E			200		
1	433		BUCKLIN RD	414 BUCKS LAKE RD		8024		2.293	07F	04F			2293		
1	411	3	BUCKS LAKE RD	411 MAIN ST		PLU NF		1.930	08F11	08F			1930		
1	411	9	BUCKS LAKE RD	PLU NF		414 BUCKS LAKE RD		4.530	08F11	07A			4530		
1	414		BUCKS LAKE RD	BUT CO		433		13.000	07F	06D			13000		
2	GV04	5	BUCKS LAKE RD 433	433		411 BUCKS LAKE RD		11.940	07F	04F			11940		
2	BC06		BUSH ST	GV03 GRAND ST		112 MAIN ST		0.160	08E41	03F			160		
2	515		CAMP LAYMAN RD	BC01 RED RIVER DR		END		0.034	08F11	05G			34		
1	EQ50		CANINE CT	SH070		END		0.590	08F24	10C			590		
2	CH48		CAROL AVE	EQ44 NO MILL CR RD (north)		EQ44 NO MILL CR RD (south)		0.049	08F11	08K			49		
2	PR01		CAROL LANE WEST	CH47 JENSEN RD		SH036		0.197	07E23	04F			197		
2	TV05		CARRIE ST	TV03 THOMPSON ST		END		0.520	08F11	07J			520		
2	IF03		CARROL AVE	IF01 THIRD ST		211		0.090	08E52	01F			90		
2	CM04		CARTER ST	SH083		END		0.180	08E51	04D			180		
2	VR03		CASSIDY DR	VR01 VALLEY RCH RD		END		0.310	08E41	09J			310		
2	QU28		CATE ST	QU13 EAST ST		END		0.083	08F45	02D			83		
1	320		CATFISH BEACH RD	SH036		END		0.050	08F11	08F			50		
2	VR02		CAYDEN DR	VR01 VALLEY RCH RD		END		0.540	07E24	03B			540		
2	AP04		CEDAR CIR	AP01 PONDEROSA DR		END		0.290	08F45	02D			290		
2	GV28		CEDAR DR	215 HIDEAWAY RD		END		0.030	07E24	07G			30		
2	HB06		CEDAR LN	321		END		0.100	08E41	04F			100		
2	LP13		CEDAR LN	511 MAIN ST (west)		313 A-13		0.429	07E25	08A			429		
2	PE03		CEDAR LN	PE04 LUNDY LN (west)		511 MAIN ST (east)		0.180	08F41	08B			180		
2	CH25		CEDAR ST	SH036		PE04 LUNDY LN (east)		0.292	08F34	06E			292		
2	EQ10		CEDAR ST	EQ16 THIRD ST		CH13 FIRST AVE		0.320	07E23	04G			320		
1	123		CEMETERY RD	112		EQ21 KATHERINE ST		0.170	08F12	09A			170		
2	TV08		CEMETERY ST	TV04 WARREN ST		END		0.140	09F31	01H			140		
2	EQ13		CENTER ST	EQ18 FIFTH ST		207		0.120	08E52	01F			120		
2	PV03		CENTER ST	PV01 TERRACE DR		EQ04 MILL CREEK RD		0.602	08F12	09A			602		
2	QU38		CENTRAL AVE	QU37 S LINDAN AVE		310 ALMANOR DR WEST		0.070	07E34	05E			70		
1	404	10	CHANDLER RD	IN PLU NF SH070 TO		SH070		0.208	08F11	08F			208		
2	HB10		CHANDLER LN	SH070 (west)		SH070 (east)		4.100	08F12	05A			4100		
2	CH69		CHESTER AIRPORT RD	321 BIG SPRINGS DR		END		2.000	08F11	03F			2000		
1	318	10	CHESTER JUN LK RD	SH36		CH13 FIRST AVE		0.134	07E25	08A			134		
1	318		CHESTER JUN LK RD	LAS NF		8142		0.904	07E23	05J			904		
1	312	10	CHESTER WAR VLY RD	312		LAS NF		5.470	07E	02E			5470		
1	312		CHESTER WAR VLY RD	LAS NF		8140		3.500	07E23	03F			3500		
1	102A		CHILCOOT AVE	CH02 FEATHER RIV DR		LAS NF		10.889	07E23	02B			10889		
2	LP03		CHINA ALLEY	END (west)		END (east)		2.800	07E23	03F			2800		
1	208		CHINA GRADE RD	513 CHURCH ST		LP02 PIKE RD		0.526	09F	05G			526		
2	GE02		CHINOOK TRAIL	403 MT HOUGH CR LK		207 ARLINGTON RD		0.060	08F41	08B			60		
2	WE02		CHIPMUNK LN	GE01 IROQUOIS TRL (north)		GE01 IROQUOIS TRL (south)		5.240	08E52	07D			5240		
1	513		CHURCH ST	112		END		0.240	08F34	09H			240		
				511 MAIN ST		513 PORT WINE RD		0.060	09F	04H			60		
								0.190	08F41	08B			190		



2017 PLUMAS COUNTY  
MAINTAINED ROAD DATA

Alphabetical

GROUP SEQUENCE	ROAD NUMBER	ROAD SEGMENT	ROAD NAME	FROM	[NUMBER AND NAME]	TO	[NUMBER AND NAME]	LENGTH MILES	OTHER AREA	MAP NUMBER	MAP COORDINATE	REMARKS	MILEAGE FROM TABS	UN CONSTRUCTED	NON COUNTY
2	GV02	CHURCH ST	CHURCH ST	GV04 BUSH ST		GV07 PINE ST		0.130		08E41	04E		130		
2	JV02	CHURCH ST	CHURCH ST	506		JV03 ARASTRA ST		0.110		08F34	09A		110		
2	QU12	CHURCH ST	CHURCH ST	QU04 EAST HIGH ST		SH070 LAWRENCE ST		0.160		08F11	08F		160		
2	LP12	CIRCLE DR	CIRCLE DR	LP13 CEDAR LN		511 MAIN ST		0.220		08F41	08B		220		
2	QU48	CIRCLE DR	CIRCLE DR	QU03 JACKSON ST		QU37 SO LINDAN AVE		0.168		08F11	08F		168		
2	QU34	CLAREMONT DR	CLAREMONT DR	SH070		QU46 NUGGET LN		0.298		08F11	08G		298		
2	EQ01	CLAREMONT WAY	CLAREMONT WAY	EQ04 MILL CR RD		END		0.160		08F11	08K		160		
1	323	CLIFFORD DR	CLIFFORD DR	313 A13		END		2.517		07E24	06G		2517		
1	115	CLIO STATE 40A RD	CLIO STATE 40A RD	IN PLU NF SH070 TO		SH089		2.000		08F44	01C		2000		
1	115	CLIO STATE 40A RD	CLIO STATE 40A RD	SH070		SH089		3.380		08F35	05G		3380		
2	QU36	CLOMAN AVE	CLOMAN AVE	SH070 MAIN ST		SH070 LAWRENCE ST		0.070		08F11	08F		70		
2	EQ25	CLOUGH ST	CLOUGH ST	SH070		END		0.237		08F12	08A		237		
2	QU03	COBURN ST	COBURN ST	QU03 JACKSON ST		END		0.300		08F11	08F		300		
2	VR05	CODY DR	CODY DR	VR01 VALLEY RCH RD		VR02 CAYDEN DR		0.234		08F45	04G		234		
2	DE09	COLINA CT	COLINA CT	DE05 BELLA VISTA DR		END		0.080		09F31	03A		80		
2	CV02	COTTONWOOD CT	COTTONWOOD CT	BE01 VALLEY VIEW DR		END		0.046		08F11	07D		46		
2	PE09	COTTONWOOD DR	COTTONWOOD DR	502 POPLAR VLY RD		PE04 LUNDY LN		0.426		08F34	06E		426		
2	PH02	COUGAR WAY	COUGAR WAY	127 PLUMAS AVE		PH01 WOLF AVE		0.038		09F31	03C		38		
1	425	COUNTRYMAN DR	COUNTRYMAN DR	423 BIG CREEK RD		429 GRIZZLY LOOP		0.502		07F1	02C		502		
1	408A	COUNTY HOSPITAL RD	COUNTY HOSPITAL RD	419 GOLDEN EAGLE DR (west)		419 GOLDEN EAGLE DR (east)		0.440		08F11	06E		440		
2	QU08	COURT ST	COURT ST	QU03 JACKSON ST		SH070 MAIN ST		0.070		08F11	08E		70		
2	LT03	COVE ST	COVE ST	LT02 LAKEVIEW DR		313A PENINSULA DR		0.120		07E24	07H		120		
2	EQ26	CRAWFORD ST	CRAWFORD ST	EQ11 FIRST ST		EQ37 SIERRA WAY		0.181		08F12	09A		181		
2	BC10	CREEKHAVEN DR	CREEKHAVEN DR	BC08 BAILEY CREEK DR		BC15		0.346		07E24	09G		346		
2	CM02	CRESCENT ST	CRESCENT ST	CM11		CM04 CARTER ST		0.140		08E41	09J		140		
2	QU35	CREST VIEW DR	CREST VIEW DR	QU34 CLAREMONT DR		QU44 LINDAN LN		0.140		08F11	08G		140		
1	533	CROAD	CROAD	115 CLIO STATE 40A RD		END		0.285		08F54	01C		285		
2	CE01	CROCKER COURT	CROCKER COURT	WE10 VALLEY VIEW DR		END		0.230		09F1	03D		230		
1	503A	CROMBERG CENTRY RD	CROMBERG CENTRY RD	503 OLD CROMBERG RD		END		0.165		08F24	08A		165		
2	CH28	CROSS ST	CROSS ST	CH28 MOODY MDW RD		CH24 ASPEN ST		0.220		07E23	04G		220		
2	DE08	CUESTA WY	CUESTA WY	DE05 BELLA VISTA DR		DE06 LADERA LN		0.170		08F35	03K		170		
2	CE02	CULL COURT	CULL COURT	WE10 VALLEY VIEW DR		END		0.120		09F1	03D		120		
2	BE03	DAISY LANE	DAISY LANE	BE01 VALLEY VIEW DR		END		0.040		08F11	08D		40		
2	QU49	DAME SHIRLEY LN	DAME SHIRLEY LN	QU08 COURT ST		QU10 HARBISON AVE		0.088		08F11	08E		88		
2	EQ45	DANNY CT	DANNY CT	EQ44 NO MILL CR RD		END		0.060		08F11	08J		60		
2	438	DARBY LN	DARBY LN	414 BUCKS LAKE RD		END		0.032		07F	0E4		32		
2	PE21	DAVID CIR	DAVID CIR	PE20 EUREKA SPRINGS DR		END		0.030		08F34	7E		30		
2	QU05	DAVIS ST	DAVIS ST	QU03 JACKSON ST		411		0.060		08F11	08E		60		
2	DE10	DELLEKER PARK DR	DELLEKER PARK DR	SH070		END		0.096		08F35	04K		96		
2	DE01	DELLEKER RD	DELLEKER RD	PLU NF		END		0.100		09F31	03A		100		
2	DE01	DELLEKER RD	DELLEKER RD	SH070		PLU NF		0.450		09F31	03A		450		
1	213	DIAMOND MT RD	DIAMOND MT RD	214 NO ARM RD		214 NO ARM RD		5.290		08E	08C		5290		
1	213	DIAMOND MT RD	DIAMOND MT RD	214 NO ARM RD		LAS CO		15.770		08E	07D		15770		
1	319	DIGGER RAVINE RD	DIGGER RAVINE RD	SH070		8047		0.620		07E1	04B		620		
1	BC12	DINSMORE DR	DINSMORE DR	BC10 CREEKHAVEN DR		END		0.634		07E4	0F6		634		
2	EQ41	DOGWOOD CT	DOGWOOD CT	EQ11 FIRST ST		END		0.150		08F12	09A		150		
1	103	DOTTA GUIDICI RD	DOTTA GUIDICI RD	SH070		SH 284		3.910		09F	05F		3910		
1	105	DOTTA LN	DOTTA LN	SH049		117 SIERRA VLY RD		1.790		09F	07G		1790		
2	BC02	DURKIN DR	DURKIN DR	323 CLIFFORD DR		BC08 BAILEY CREEK RD		0.636		07E24	05G		636		
2	AL02	DUSTY RD	DUSTY RD	AL01		END		0.130		07E34	04C		130		
1	204	DX CYN RND LNG RD	DX CYN RND LNG RD	8047		SH089		7.020		07E	08J		7020		
1	315B	DYER DR	DYER DR	SH147		END		0.190		07E25	10C		190		
1	107	DYSON LN	DYSON LN	109 BECKWORTH CP RD		108		3.260		09F32	10C		3260		
1	107	DYSON LN	DYSON LN	108		SH049		6.930		09F32	09H		6930		
2	GE33	E CHILULA TRAIL	E CHILULA TRAIL	GE31 TOLOWA TRAIL		END		0.068		08F34	09J		68		



2017 PLUMAS COUNTY  
MAINTAINED ROAD DATA

Alphabetical

GROUP SEQUENCE	ROAD NUMBER	ROAD SEGMENT	ROAD NAME	FROM	NAME	[NUMBER AND	TO	AND NAME]	LENGTH MILES	OTHER AREA	MAP NUMBER	MAP COORDINATE	REMARKS	MILEAGE FROM TABS	UN CONSTRUCTED	NON COUNTY
2	AW12		EAGLE CREST DR	AW12 TOP OF THE WEST DR			END	QU10 HARBISON AVE	0.250	07E33	01J			230		
2	QU04		EAST HIGH ST	QU13 EAST ST			END	310 ALMANOR DR WEST	0.220	08F11	08F			220		
2	PV06		EAST ST	PV05 SCOTT DR			END	310 ALMANOR DR WEST	0.040	07E34	05E			40		
2	QU13		EAST ST	SH070 MAIN ST			END		0.230	08F11	08F			230		
1	104		EDGE ST	SH049			SH070		0.310	09F	05F			310		
2	BE02		EDGEWOOD DR	BE05 MEADOW WY			BE06 WILDWOOD CT		0.080	08F11	08D			80		
2	CH38		EDGEWOOD DR	CH36 GLENWOOD DR			CH46 MAYWOOD DR		0.250	07E23	04G			250		
2	QU21		EDWARDS AVE	END (west)			END (east)		0.162	08F11	08E			162		
2	EQ02		ELM ST	405 LEE RD			END		0.120	08F12	08A			120		
2	DE02		ESCONDIDO WAY	DE01 DELLER RD			END		0.200	09F31	03A			200		
2	PE20		EUREKA SPRINGS DR	502 POPULAR VALLEY DR (north)			502 POPULAR VALLEY DR (south)		0.430	08F34	7E			430		
2	JV01		EUREKA ST	506			END		0.078	08F34	09A			78		
2	HB05		EVERGREEN CIR	HB04 WOODLAKE DR			END		0.111	07E25	07A			111		
2	PE05		EVERGREEN CIR	502 POPULAR VLY RD (north)			502 POPULAR VLY RD (south)		0.499	08F34	06E			499		
2	CH30		FARRAR DR	SH036			CH31 RICHARDSON WY		0.310	07E23	04G			310		
2	WE01		FAWN LN	112			END		0.410	09F	04B			410		
2	CH02		FEATHER RIVER DR	SH 36			312 CHESTER WARNER		0.521	07E23	03G			521		
1	129		FEATHER RIVER INN	SH070			END		0.265	08F34	06G			265		
2	EQ18		FIFTH ST	EQ14 MANSELL ST			EQ12 PINE ST		0.260	08F12	09A			260		
2	IF08		FIFTH ST	IF04 INDIAN FALLS RD			END		0.040	08E51	04D			40		
2	IF09		FIFTH ST	IF07 THOMPSON AVE			END		0.100	08E51	04D			100		
2	QU11		FILL MORE ST	SH070 MAIN ST			QU04 EAST HIGH ST		0.100	08F11	08F			100		
2	HB08		FIR LANE	HB01 MARY ANN LANE			HB07 PARK HILL DR		0.080	07E25	07A			80		
2	CH27		FIR ST	CH35 MARTIN WY			END		0.050	07E23	04G			50		
1	313C		FIREHOUSE RD	313A PENINSULA DR			END		0.066	07E24	08G			66		
2	AP03		FIRLAND WAY	AP01 PONDEROSA DR			END		0.100	07E24	07G			100		
2	CH13	5	FIRST AVE	CH26 MOODY MEADOW RD			SH036		0.570	07E23	04G			570		
2	CH13		FIRST AVE	END			CH26 MOODY MDW RD		1.900	07E23	07G			1900		
2	CH17		FIRST ST	CH13 FIRST AVE			CH15 THIRD AVE		0.170	07E23	04H			170		
2	CH29		FIRST ST	CH13 FIRST AVE			CH28 CROSS ST		0.382	07E23	04G			382		
2	EQ11		FIRST ST	SH036			END		0.651	08F12	09A			651		
2	GV15		FIRST ST	SH070			GV14 HIGBIE AVE		0.200	08E41	03D			200		
2	TV09		FISHER ALLEY	211			TV03 LONDON AVE		0.063	08E52	01F			63		
2	BC07		FLINT WY	BC02 DURKIN DR (west)			TV03 THOMPSON ST		0.430	07E24	06F			430		
2	QU24		FOOTHILL WY	QU20 MONTEVISTA AVE			QU23 BOYLE ST		0.100	08F11	08F			100		
2	EQ42		FOREST VIEW DR	EQ04 MILL CREEK RD			END		0.273	08F11	09J			273		
2	GV12		FORGAY AVE	GV16 SECOND ST			202		0.120	08E41	03D			120		
1	216		FORGAY RD	SH089			216 PIONEER RD		3.003	08E41	04H			3003		
2	CH16		FOURTH AVE	CH19 THIRD ST			CH18 SECOND ST		0.120	07E23	04H			120		
2	CH20		FOURTH ST	CH21 RIVERSIDE AVE			CH13 FIRST AVE		0.072	07E23	03G			72		
2	EQ17		FOURTH ST	EQ14 MANSELL ST			EQ12 PINE ST		0.260	08F12	09A			260		
2	IF02		FOURTH ST	IF03 CARROL AVE			IF07 THOMPSON AVE		0.230	08E51	04D			230		
1	109B		FRANCE RD	109 BECKWORTH CP RD			END		0.190	09F	07C			190		
2	GV22		FRANKLIN ALLEY	SH089			GV09 MILL ST		0.040	08E41	03E			40		
2	CH08		FRONT AVE	CH06 BRIDGE ST			CH05 GAY ST		0.050	07E23	03G			50		
2	BC15		FROSTWOOD AVE	END (north)			END (south)		0.188	07E24	06G			188		
2	BE08		GANSNER CREEK CT	BE01 VALLEY VIEW DR			END		0.080	08F11	8E			80		
1	426		GANSNER PARK DR	409 BESKEEN LANE			END		0.242	08F11	07E			242		
2	BC03		GATEWAY DR	BC02 DURKIN DR			BC01 RED RIVER DR		0.403	07E23	05G			403		
2	CH05		GAY ST	CH13 FIRST AVE			CH11 MELISSA AVE		0.220	07E23	03G			220		
1	111A		GENESE INDN CR RD	111 BCKWRTH GEN RD			8106		0.680	08E	09F			680		
1	112	3	GENESE RD	111A GEN INDN CR RD			113		4.150	09F	09F			4150		
1	112	3	GENESE RD	207 ARLINGTON RD			111 BCKWRTH GEN RD		6.450	08E52	01G			6450		
1	529		GILL RANCH RD	SH070			END		0.700	08F23	06J			700		
2	CH36		GLENWOOD DR	SH036			CH38 EDGEWOOD DR		0.080	07E23	04G			80		

2017 PLUMAS COUNTY  
MAINTAINED ROAD DATA

Alphabetical

GROUP SEQUENCE	ROAD NUMBER	ROAD SEGMENT	ROAD NAME	FROM	[NUMBER AND NAME]	TO	[NUMBER AND NAME]	LENGTH MILES	OTHER AREA	MAP NUMBER	MAP COORDINATE	REMARKS	MILEAGE FROM TABS	UN CONSTRUCTED	NON COUNTY
2	LP08		GLENWOOD WY	LP05 MOOREVILLE RD		END		0.013	08F41	08B			13		
1	519		GOLD LAKE FOR HWY	SH 89		SIE CO		7.565	08F34	10A			7565		
1	501	1	GOLD LAKE RD	GE46 YONKALLA TRL		519 GOLD LAKE FH		0.539	08F44	01H			539		
1	501	3	GOLD LAKE RD	519 GOLD LAKE FH		SIE CO		4.280	08F44	01H			4280		
2	SS03		GOLD MTN RD	SS02 TAMARACK WY		END		0.115	08F41	06D			115		
1	530		GOLD NUGGET LN	531 SMITH CREEK RD		END		0.260	08F34	08G			260		
1	524		GOLD RIDGE DR	506 GRAEGLE JHNSVL R		END		0.490	08F34	07G			490		
2	LP07		GOLD ST	511 MAIN ST		END		0.133	08F41	08B			133		
1	419	5	GOLDEN EAGLE AVE	SH070		END		0.568	08F11	06E			568		
2	QU18		GOODWIN AVE	QU07 BUCHANAN ST		END		0.100	08F11	08E			100		
2	AW11		GOOSE BAY VIEW TRAIL	AW06 OSPREY LOOP		END		0.414	07E33	02H			414		
1	422		GOPHER HILL LAND R	435 SNAKE LAKE RD		END		0.542	07F15	06G			542		
1	505		GRAEGLE TR STA RD	521 BLSDEN GRA RD		END		0.025	08F34	08J			25		
1	506	10	GRAEGLE JHNSVL RD	PLU NF		JV02 CHURCH ST		4.390	08F34	07F			4390		
1	506		GRAEGLE JHNSVL RD	SH089		PLU NF		1.300	08F34	08H			1300		
2	GV05		GRAND ST	SH089		GV04 BUSH ST		0.130	08E41	03F			130		
2	BW05		GREELEY ST	BW04 MAIN ST		END		0.180	09F32	02C			180		
2	GV29		GREEN MEADOWS LN	GV19 HOT SPRINGS RD		END		0.320	08E41	03F			320		
1	508		GREENHORN RANCH RD	8057		SH070		2.052	08F23	03D			2052		
1	201A		GREENVILLE DUMP RD	SH089		END		0.450	08E41	02E			450		
1	GV30		GREENVILLE PARK RD	GV19 HOT SPRINGS RD		END		0.400	08E41	04G			400		
1	112C		GREENVILLE RES RD	112		END		0.370	08E	07B			370		
2	CH63		GREY BIRCH WY	CH51 WILLHOITE RD		CH62 BLACK OAK DR		0.072	07E23	05F			72		
1	429		GRIZZLY LOOP	423 BIG CREEK ROAD (west)		423 BIG CREEK ROAD (east)		0.586	07F1	02D			586		
1	113	4	GRIZZLY RD	111 BCKWRTH GEN RD		8076		20.075	08E	10E			20075		
1	113	5	GRIZZLY RD	8076		126 LAKE DAVIS RD		5.855	09F1	01B			5855		
1	113	6	GRIZZLY RD	126 LAKE DAVIS RD		PLU NF		4.160	09F1	01B			4160		
1	113	7	GRIZZLY RD	PLU NF		SH070		2.200	09F31	04B			2200		
2	PH04		GRIZZLY WAY	127 PLUMAS AVE		END		0.192	09F31	03C			192		
1	202	1	GRNVL WOLF CR RD	SH089		202B PINEBROOK WY		2.180	08E41	04E			2180		
1	202	2	GRNVL WOLF CR RD	202B PINEBROOK WY		202A SETZER CP RD		0.400	08E1	05C			400		
1	202	3	GRNVL WOLF CR RD	202A SETZER CP RD		SH089		1.110	08E1	02C			1110		
1	203	10	GRNVL RND VLY RD	PLU NF		204		2.490	08E41	04E			2490		
1	203		GRNVL RND VLY RD	202 GRNVL WOLF CR RD		PLU NF		0.300	08E41	04E			300		
2	QU40		GROVER ALLEY	QU01 BRADLEY ST		QU10 HARBISON AVE		0.029	08F11	08F			29		
2	GV03		HAMBLIN AVE	GV06 JESSIE ST		GV05 GRAND ST		0.100	08E41	03F			100		
2	IF05		HANNON AVE	END		END		0.280	08E51	04D			280		
2	QU10		HARBISON AVE	QU04 EAST HIGH ST		SH070 MAIN ST		0.100	08F11	08F			100		
1	312B		HARKNESS DR	312 CHESTER WAR VIL (north)		312 CHESTER WAR VIL (south)		0.307	07E	02D			307		
1	118		HARRET LN	107 DYSON LN		SIE CO		3.000	09F32	10K			3000		
1	532	2	HARRISON RD	508A		PLU NF		2.200	08F23	05G			2200		
1	532	4	HARRISON RD	PLU NF		508 GREENHORN RANCH RD		0.750	08F23	03F			750		
1	532	1	HARRISON RD	SH070		508A		0.350	08F23	05G			350		
1	108A		HAWLEY RD	SH070		END		0.460	09F32	02E			460		
2	FLO1		HIDDEN VALLEY RD	SH284		END		0.107	09F	05G			107		
2	GV27		HIDEAWAY LN	215 HIDEWAY RD		END		0.104	08E41	04F			104		
1	215		HIDEAWAY RD	SH089		203		1.009	08E41	04F			1009		
2	GV14		HIGBIE AVE	202		GV18 KINDER AVE		0.190	08E41	03D			190		
2	MH01		HIGHLAND RD	216 PIONEER RD		END		0.170	08E41	06J			170		
1	301		HIGHLANDS RD	423 BIG CREEK RD		8027		1.414	07F1	02C			1414		
2	BC05		HIGHWOOD CIR	BC03 GATEWAY DR		BC04 MANOR DR		0.299	07E23	05G			299		
2	HB02		HILL CREST DR	HB01 MARY ANN LN		END		0.640	07E25	07A			640		
1	525		HILL SIDE DR	404 CHANDLER RD		END		0.360	08P12	07D			360		
2	GV10		HILL SIDE DR	SH089		END		0.350	08E41	03E			350		
1	309	10	HMBG HUM CROSS RD	IN LAS NF	305 TO	308 HUMBOLDT RD		2.330	07E34	06C			2330		

2017 PLUMAS COUNTY  
MAINTAINED ROAD DATA

Alphabetical

GROUP SEQUENCE	ROAD NUMBER	ROAD SEGMENT	ROAD NAME	FROM	[NUMBER AND NAME]	TO	AND NAME]	[NUMBER	LENGTH MILES	OTHER AREA	MAP NUMBER	MAP COORDINATE	REMARKS	MILEAGE FROM TABS	UN CONSTRUCTED	NON COUNTY
1	309		HMBG HUM CROSS RD	305		308 HUMBOLDT RD			1.000		07E34	06C		1000		
2	TV07		HODGKINS ST	TV01 ANNE ST		TV02 NELSON ST			0.070		08E52	01F		70		
2	GE30		HOKAN TRAIL	GE27 SHASTA TRAIL		END			0.175		08F34	09J		175		
2	GE07		HOPI TRAIL	GE06 HUPA TRL		END			0.030		08F34	09H		30		
2	DE11		HORSESHOE TRAIL	DE10 DELLEKER PK DR		DE12 N HORSESHOE TR			0.098		08F35	04K		98		
2	GV19		HOT SPRINGS RD	SH089		END			0.460		08E41	04F		460		
1	303A		HOWELL'S RD	303 BELDEN TOWN RD		END			1.400		07E1	02B		1400		
2	GE39		HUCHNOM TRAIL	GE23 TOLOWA TRL		GE41 MODOC TRL			0.138		08F34	09J		138		
2	GV13		HUDSON AVE	202		GV14 HIGBIE AVE			0.200		08E41	03D		200		
2	DE07		HUERTA WY	DE05 BELLA VISTA DR		DE06 LADERA LN			0.110		08F35	03K		110		
1	308	10	HUMBOLDT RD	IN LAS NE SH089 TO		BUT CO			12.590		07E33	06C		12590		
1	308		HUMBOLDT RD	SH089		BUT CO			4.000		07E33	03J		4000		
1	307	10	HUMBUG RD	IN LAS NE BUT CO TO		309 HMBG HUM CROSS			11.340		07E33	06J		11340		
1	307		HUMBUG RD	BUT CO		309 HMBG HUM CR RD			4.000		07E	08C		4000		
2	GV21		HUMPHREY CIR	SH089 (west)		SH089 (east)			0.180		08E41	04G		180		
2	GE06		HUPA TRAIL	GE04 NAVAJO TRL		END			0.230		08F34	09H		230		
2	BC09		IDYLBERRY CR	BC02 DURKIN DR		BC03 GATEWAY DR			0.288		07E24	0F5		288		
2	IFO4		INDIAN FALLS RD	SH089		END			0.370		08E51	04D		370		
1	205		INDIAN FLS PXTN RD	END		END			1.490		08E51	06A		1490		
1	328		INDIAN HILLS RD	SH147 (north)		SH147 (south)			0.422		07E25	09B		422		
2	BW08		INDIAN ST	BW04 MAIN ST		BW02 MYRTLE ST			0.130		09F32	02C		130		
1	132		INDUSTRIAL WAY	END		END			0.133		09F31	04A		133		
2	CH39		INGLEWOOD DR	SH070		CH38 EDGEWOOD DR			0.260		09F32	02D		260		
2	GE01		IRWIN WY	SH089		END			0.130		07E23	04G		130		
2	CH34		IRWIN WY	CH35 MARTIN WY		SH036			0.500		08F34	09H		500		
2	GE49		ISHI TRAIL	GE47 NOMLAKI TRAIL		GE47 NOMLAKI TRAIL			0.130		07E23	04G	NEW ROAD	130		
2	PE23		JACK'S COURT	502 POPLAR VALLEY RD		END			0.496					469		
2	QU03	1	JACKSON ST	QU034 CLAREMONT DR		QU14 ROCHE AVE			0.040		08F34	0E6		40		
2	QU03	2	JACKSON ST	QU14 ROCHE AVE		QU08 COURT ST			0.293		08F11	08G		293		
2	QU03	3	JACKSON ST	QU08 COURT ST		418			0.450		08F11	08F		450		
2	526		JAMISON RD	506 GRA JHNSVL RR		524 GOLD RIDGE DR			0.448		08F11	08E		448		
2	CH47		JENSEN RD	SH036		END			0.469		08F34	07G		469		
2	GV06		JESSIE ST	SH089		GV04 BUSH ST			0.180		07E23	04F		180		
1	506C		JHNSVL EURKA LK RD	JV02 CHURCH ST		END			0.130		08E41	03F		130		
1	507		JHNSVL MCCREA RD	506		SIE CO			1.020		08F34	09A		1020		
1	207A		JOHNSON RANCH RD	207 (west)		207 (east)			13.320		08F34	10A		13320		
2	GV25		JOYCE COURT	429 GRIZZLY LOOP		END			0.490		08E52	01E		490		
2	GV25		JUSTICE LN	SH089 CRESCENT		END			0.140		07F1	02D		140		
2	EQ22		KAREN ST	EQ10 CEDAR ST		EQ26 CRAWFORD ST			0.053		08E41	04E		53		
2	GE24		KAROK TRAIL	GE23 TOLOWA TRL		END			0.250		08F12	09A		250		
2	EQ21		KATHERINE ST	EQ10 CEDAR ST		EQ26 CRAWFORD ST			0.050		08F34	09J		50		
2	GE34		KATO TRAIL	GE27 SHASTA TRAIL		GE23 TOLOWA TRL			0.250		08F12	09A		250		
1	415		KEDDIE RESORT RD	SH070		END			0.382		08F34	09J		382		
1	424		KELSEY LN	406 QCY JCT RD		END			0.450		08E51	09D		450		
2	GV18		KINDER AVE	202		GV14 HIGBIE AVE			0.222		08F11	07G		222		
2	GE36		KLAMATH TRAIL	GE23 TOLOWA TRL		GE34 KATO TRL			0.415		08E41	03E		415		
2	AW02		KOKANEE TR	AW01 LK ALMANOR W		END			0.559		08F34	09J		559		
2	GE50		KONKOW TRAIL	GE47 NOMLAKI TRAIL		GE47 NOMLAKI TRAIL			0.242		07E33	01H	NEW ROAD	242		
2	GE28		KOROMINU TRAIL	GE27 SHASTA TRAIL (west)		GE27 SHASTA TRAIL (east)			0.237		08F34	09J		237		
2	GE40		KUSA TRAIL	GE39 HUCHNOM TRL		END			0.529		08F34	09J		529		
2	DE08		LADERA LN	DE01 DELLEKER RD		DE05 BELLA VISTA DR			0.055		08F34	09J		55		
1	313B		LAKE ALMANOR DR	313 A 13		321			0.220		09F31	03A		220		
2	AW01		LAKE ALMANOR W DR	SH089		AW06 OSPREY LOOP			0.740		07E25	08A		740		
1	126	10	LAKE DAVIS RD	IN PLU NF		PRTL TO			2.732		07E33	02H		2732		
				112					2.500		09F31	02C		2500		

2017 PLUMAS COUNTY  
MAINTAINED ROAD DATA

Alphabetical

GROUP SEQUENCE	ROAD NUMBER	ROAD SEGMENT	ROAD NAME	FROM [NUMBER AND NAME]	TO [NUMBER AND NAME]	LENGTH MILES	OTHER AREA	MAP NUMBER	MAP COORDINATE	REMARKS	MILEAGE FROM TABS	UN CONSTRUCTED	NON COUNTY
1	126		LAKE DAVIS RD	PRTL	112 GRIZZLY RD	4.695		09F31	02C		4695		
2	H803		LAKE VIEW WAY	313 A-13	END	0.118		07E25	07A		118		
2	LT02		LAKEVIEW DR	LT01 LAKEVIEW TER	LT03 COVE ST	0.205		07E24	07A		205		
2	LT01		LAKEVIEW TERR	313A PENINSULA DR	LT02 LAKEVIEW DR	0.093		07E24	07H		93		
2	GV23		LONDON ALLEY	GV11 LONDON AVE	GV14 HIGBIE AVE	0.148		08E41	03D		148		
2	GV11		LONDON AVE	202	GV18 KINDER AVE	0.100		08E41	03D		100		
1	511B	10	LAPORTE PINES RD	511 MAIN ST	END	0.057		08F41	088		57		
2	CH01		LASSEN ST	CH02 FEATHER RIV DR	END	0.640		07E23	03G		640		
2	GE12		LASSIK TRAIL	GE14 MAIDU TRL	END	0.040		08F34	09H		40		
2	CH42		LAUREL LN	CH13 FIRST AVE	CH22 WILLOW ST	0.118		07E23	03G		118		
2	QU29		LEE AVE	QU03 JACKSON ST	END	0.120		08F11	08E		120		
2	QU42		LEE CIRCLE	QU29 LEE AVE (north)	QU29 LEE AVE (south)	0.059		08F11	08E		59		
1	405		LEE RD	SH070	406 QUINCY JCT RD	2.160		08F12	08A		2160		
2	QU16		LEONARD AVE	SH070 LAWRENCE ST	QU15 PLUMAS AVE	0.130		08F11	08F		130		
1	511A	10	LEXINGTON HILL RD	511 QUY LA PORTE RD	8036	1.250		07F	09J		1250		
1	214A		LIGHTS CREEK LN	213 DIAMOND MT RD	END	0.220		08E	07D		220		
2	QU30		LINDAN AVE	SH070	END	0.100		08F11	08F		100		
2	QU44		LUNDAN LN	QU03 JACKSON ST	QU35 CRESTVIEW DR	0.059		08F11	08F		59		
1	320		LITTLE BEAR RD	SH070	SH089	1.240		08F34	05F		1240		
1	514	1	LITTLE GRASS VLY RD	511	DAM	5.000		08F41	07D		5000		
1	306A		LITTLE SENECA RD	306 SENECA RD	END	0.300		07E	08H		300		
1	220		LO WILLIAMS VLY RD	219 WILLIAMS VLY RD	END	0.100		08E	07A		100		
2	AW04		LONG IRON DR	AW01 LK ALMANOR W	AW06 OSPREY LOOP	0.502		07E33	02J		502		
1	130		LONG VALLEY WAY	SH070	END	0.011		08F23	06K		11		
2	CH56		LORRAINE DR	CH55 ANDREWS RD	CH13 FIRST AVE	0.237		07E23	05G		237		
2	QU31		LOUISIANA AVE	QU14 ROCHE AVE	END	0.130		08F11	08F		130		
2	CL02		LOWER MAIN ST	115	CL03 MAIN ST	0.100		08F44	01B		100		
2	PE04		LUNDY LN	502 POPLAR VLY RD	END	0.693		08F34	06E		693		
2	E031		MAC LN	EQ11 FIRST	END	0.058		08F12	09A		58		
1	106		MADDALENA RD	SH070	END	2.820		09F32	03H		2820		
2	PE06		MADORA LAKE RD	502 POPLAR VLY RD	END	0.141		08F34	06E		141		
2	AA01		MAGNOLIA AVE	PRTL	END	0.280		09F31	02D		280		
2	AW07		MAIDU DR	AW04 LONG IRON DR	AW06 OSPREY LOOP	0.574		07E33	02K		574		
2	GE14		MAIDU TRAIL	SH089	GE19 PAULTE TRL	0.360		08F34	09H		360		
1	112	1	MAIN ST	SH089	112 NORTH VALLEY RD	0.900		08E41	03E		900		
1	207	2	MAIN ST	TV1 ANNIE ST	207	0.290		08E52	01F		290		
1	411	1	MAIN ST	SH070 CRESCENT ST	411 BUCKS LAKE RD	0.270		08F11	08F		270		
1	511	5	MAIN ST	LP07 GOLD ST	511B LA PORTE PNS RD	0.722		08F41	08B		722		
2	BW04		MAIN ST	111	END	0.300		09F32	02C		300		
2	CM03		MAIN ST	SH089 (south)	SH089 (north)	0.600		08E41	09J		600		
2	BC04		MANOR DR	BC03 GATEWAY DR	END	0.236		07E23	05G		236		
2	EQ14		MANSELL ST	EQ11 FIRST ST	EQ18 FIFTH ST	0.250		08F12	09A		250		
2	AW08		MANZANITA DR	AW04 LONG IRON DR	AW06 OSPREY LOOP	0.314		07E33	02K		314		
2	AP02		MANZANITA WAY	AP01 LONG IRON DR	AP01 PONDEROSA DR (north)	0.430		07E24	07G		430		
2	EQ08		MANZANITA WY	EQ29 WEST ST	EQ07 PONDEROSA DR (south)	0.070		08F11	08J		70		
2	AR02		MARIE DR	END (west)	END (east)	0.270		08E52	01B		270		
2	CH59		MARIE RD	CH56 LORRAINE DR	END	0.087		07E23	05G		87		
2	BC13		MARINA DR	323 CLIFFORD DR	END	0.571		07E24	0F7		571		
2	AW05		MARION TRL	AW01 LK ALMANOR W	AW03 SLIM	0.339		07E33	01H		339		
2	CH35		MARTIN WY	CH036	CH29 FIRST ST	0.280		07E23	04G		280		
2	H801		MARY ANN LN	313 A-13	END	0.440		07E25	08B		440		
1	402		MASSACK RD	8006	SH070	0.410		08F12	09G		410		
CH71			MASSON RD	CH69 CHESTER AIRPORT RD	CH69 CHESTER AIRPORT RD	0.183		07E23	06F		183		
2	GE29		MATTOLE TRAIL	GE27 SHASTA TRAIL	GE28 KOROMINU TRAIL	0.199		08F34	09J		199		
2	CH46		MAYWOOD DR	CH38 EDGEWOOD DR	END	0.180		07E23	04F		180		

2017 PLUMAS COUNTY  
MAINTAINED ROAD DATA

Alphabetical

GROUP SEQUENCE	ROAD NUMBER	ROAD SEGMENT	ROAD NAME	FROM	[NUMBER AND NAME]	TO	AND NAME]	[NUMBER	LENGTH MILES	OTHER AREA	MAP NUMBER	MAP COORDINATE	REMARKS	MILEAGE FROM TABS	UN CONSTRUCTED	NON COUNTY
1	102B		MCKISSIK ST	102A CHILCOOT AVE	END	END	CH41 WILLOW WY	0.072	0.072	0.072	09F	05G		72		
2	CH70		MEADOW BROOK LOOP	SH036		END	CH41 WILLOW WY	0.240	0.240	0.240	07E23	03G		240		
2	EQ24		MEADOW LN	405 LEE RD	END	END	CH41 WILLOW WY	0.120	0.120	0.120	08F12	08A		120		
2	MRO2		MEADOW RD	MRO1 WAGON RD	END	END	CH41 WILLOW WY	0.228	0.228	0.228	07E23	03G		228		
2	FLO2		MEADOW VIEW LN	FLO1 HIDDEN VLY RD	END	END	CH41 WILLOW WY	0.231	0.231	0.231	09F	05G		231		
1	436		MEADOW VLY CEM RD	414 BUCKS LAKE RD	END	END	CH41 WILLOW WY	0.114	0.114	0.114	07F15	09D		114		
1	122		MEADOW WAY	PTL	END	END	CH41 WILLOW WY	1.051	1.051	1.051	09F31	02E		1051		
2	BE05		MEADOW WAY	411	BE01 VALLEY VIEW DR	END	CH41 WILLOW WY	0.090	0.090	0.090	08F11	08D		90		
2	CH11		MELISSA AVE	SH036		END	CH41 WILLOW WY	0.518	0.518	0.518	07E23	03H		518		
2	EQ04		MILL CREEK RD	405 LEE RD	END	END	CH41 WILLOW WY	0.670	0.670	0.670	08F11	08J		670		
2	GV09		MILL ST	SH089	202	END	CH41 WILLOW WY	0.130	0.130	0.130	08E41	03E		130		
2	GE16		MIMOK TRAIL	GE15 POMO TRL (north)	END	END	CH41 WILLOW WY	0.250	0.250	0.250	08F34	09H		250		
1	527		MINERS LN	526 JAMISON RD	END	END	CH41 WILLOW WY	0.122	0.122	0.122	08F34	07G		122		
2	GET18		MOCCASIN TRAIL	GET19 PAIUTE TRL	END	END	CH41 WILLOW WY	0.240	0.240	0.240	08F34	09H		240		
2	GE41		MODOC TRAIL	GE38 MOHAVE TRL	END	END	CH41 WILLOW WY	0.098	0.098	0.098	08F34	09J		98		
2	GE38		MOHAVE TRAIL	GE23 TOLOWA TRL	END	END	CH41 WILLOW WY	0.439	0.439	0.439	08F34	09J		439		
1	508B		MOHAWK HWY 40A RD	506	SH070	END	CH41 WILLOW WY	0.640	0.640	0.640	08F34	07G		640		
1	516	10	MOHAWK VISTA DR	PLU NF	PLU NF	SH070 (east)	CH41 WILLOW WY	1.100	1.100	1.100	08F35	08B		1100		
1	516	20	MOHAWK VISTA DR	PLU NF	PLU NF	SH070 (west)	CH41 WILLOW WY	0.200	0.200	0.200	08F35	07C		200		
1	516		MOHAWK VISTA DR	SH070 (west)	END	END	CH41 WILLOW WY	1.240	1.240	1.240	08F34	07J	NEW ROAD	1240		
2	GE33		MONACHE TRAIL	519 GOLD LAKE FOREST HIGHWAY	END	END	CH41 WILLOW WY	0.147	0.147	0.147	09F31	03A		147		
2	DE03		MONTEVISTA AVE	DE02 ESCONDIDO WY	END	END	CH41 WILLOW WY	0.080	0.080	0.080	08F11	08E		80		
2	QU20		MOODY MEADOW RD	QU25 COBURN ST	END	END	CH41 WILLOW WY	0.287	0.287	0.287	07E23	04G		287		
2	CH26		MOOREVILLE RD	CH13 FIRST AVE	END	END	CH41 WILLOW WY	0.250	0.250	0.250	07E23	04G		250		
2	LP05		MORNINGSIDE CT	511 MAIN ST	END	END	CH41 WILLOW WY	0.227	0.227	0.227	08F41	08B		227		
2	MH03		MOUNTAIN VIEW RD	AW10 TOP OF THE WEST DR	END	END	CH41 WILLOW WY	0.081	0.081	0.081	07E33	01J		81		
2	MH02		MT HOUGH CIR	216 PIONEER RD	END	END	CH41 WILLOW WY	0.380	0.380	0.380	08E41	06J		380		
1	403		MT HOUGH CR LK RD	406 QUINCY JCT RD	END	END	CH41 WILLOW WY	0.050	0.050	0.050	08E41	06J		50		
1	517	10	MT TOMBA RD	PLU NF	END	END	CH41 WILLOW WY	10.133	10.133	10.133	08F11	05K		10133		
1	517		MT TOMBA RD	SH070	END	END	CH41 WILLOW WY	0.200	0.200	0.200	08F24	08B		200		
2	QU06		MYERS ST	411	QU03 JACKSON ST	END	CH41 WILLOW WY	0.400	0.400	0.400	08F24	08B		400		
2	CH23		MYRTLE ST	BW08 INDIAN ST	END	END	CH41 WILLOW WY	0.070	0.070	0.070	08F11	08E		70		
2	CH23		MYRTLE ST	SH036	BW06 BECKWORTH ST	END	CH41 WILLOW WY	0.070	0.070	0.070	09F32	02C		70		
2	DET2		N HORSESHOE TRAIL	DET0 DELLEKER PK DR	END	END	CH41 WILLOW WY	0.190	0.190	0.190	07E23	03G		190		
2	CH67		N SIERRA MDWS LN	CH11 MELLISSA AVE	END	END	CH41 WILLOW WY	0.067	0.067	0.067	08F35	04K		67		
2	CH49		NANCY AVE	CH48 CAROL AVE	END	END	CH41 WILLOW WY	0.073	0.073	0.073	07E23	03G		73		
2	GE04		NAVAJO TRAIL	GE01 IROQUOIS TRL	END	END	CH41 WILLOW WY	0.137	0.137	0.137	07E23	04F		137		
2	TV02		NELSON ST	207	END	END	CH41 WILLOW WY	0.220	0.220	0.220	08F34	09H		220		
1	137		NERVINO RD	135 NORTH INDUSTRIAL WAY	END	END	CH41 WILLOW WY	0.210	0.210	0.210	08E32	01F		210		
1	322B		NEW CHESTER DMP RD	322	END	END	CH41 WILLOW WY	0.167	0.167	0.167	09F32	02D		167		
2	BW09		NEW ST	8150	END	END	CH41 WILLOW WY	1.200	1.200	1.200	07E24	03G		1200		
1	214		NO ARM RD	BW04 MAIN ST	SH070	END	CH41 WILLOW WY	0.070	0.070	0.070	09F32	02C		70		
2	GE47		NOMLAKI TRAIL	112	213 DIAMOND MT RD	END	CH41 WILLOW WY	6.560	6.560	6.560	08E	08D	NEW ROAD	6560		
2	GE37		NONGATI TRAIL	STATE ROUTE 89	END	END	CH41 WILLOW WY	0.828	0.828	0.828	08F34	09J		828		
1	136		NORTH INDUSTRIAL WAY	GE23 TOLOWA TRL	END	END	CH41 WILLOW WY	0.045	0.045	0.045	09F32	02D		45		
2	EQ44		NORTH MILL CR RD	405 LEE RD	END	END	CH41 WILLOW WY	0.553	0.553	0.553	09F32	02D		553		
2	BW03		NORTH ST	BW03 GREELEY ST	END	END	CH41 WILLOW WY	0.340	0.340	0.340	08F11	08J		340		
1	112	2	NORTH VALLEY RD	112 MAIN ST	111	END	CH41 WILLOW WY	0.190	0.190	0.190	09F32	02C		190		
2	GE35		NOZI TRAIL	GE34 KATO TRAIL	END	END	CH41 WILLOW WY	10.480	10.480	10.480	08E41	02F		10480		
2	QU46		NUGGET LN	QU94 CLAREMONT DR	END	END	CH41 WILLOW WY	0.105	0.105	0.105	08F34	09J		105		
2	GE05		O SAGE TRAIL	GE01 IROQUOIS TRL	END	END	CH41 WILLOW WY	0.299	0.299	0.299	08F11	08G		299		
2	PE18		OAK CT	PE14 SEQUOIA DR	END	END	CH41 WILLOW WY	0.140	0.140	0.140	08F34	09H		140		
2	QU27		OAK ST	QU26 ALDER ST	END	END	CH41 WILLOW WY	0.055	0.055	0.055	08F34	06E		55		
1	404A		OAKLAND CAMP RD	404 CHANDLER RD	END	END	CH41 WILLOW WY	0.060	0.060	0.060	08F11	08F		60		
					END	END	CH41 WILLOW WY	1.670	1.670	1.670	08F11	04H		1670		

2017 PLUMAS COUNTY  
MAINTAINED ROAD DATA

Alphabetical

GROUP SEQUENCE	ROAD NUMBER	ROAD SEGMENT	ROAD NAME	FROM	[NUMBER AND NAME]	TO	[NUMBER AND NAME]	LENGTH MILES	OTHER AREA	MAP NUMBER	MAP COORDINATE	REMARKS	MILEAGE FROM TABS	UN CONSTRUCTED	NON COUNTY
2	QU09		ODDIE WAY	QU04 EAST HIGH ST	END			0.120		08F11	08F		120		
1	207C		OLD ARLINGTON RD	207	END			0.300		08E41	10J		300		
1	503		OLD CROMBERG RD	509 SLOAT RD	SH070			0.670		08F24	08A		670		
2	CM06		OLD GREEN MTN RD	CM04 CARTER ST	END			0.330		08E41	09J		330		
1	128		OLD GRIZZLY RD	112 GRIZZLY RD (north)	END			0.668		09F	04B		668		
1	201	10	OLD HAJIN RD	PLU NF	SH089			4.600		07E35	07C		4600		
1	201		OLD HAUN RD	SH147	PLU NF			2.800		07E35	07C		2800		
2	EQ20		OLD HWY	SH070	END			0.300		08F12	08B		300		
1	416		OLD HWY RD	SH070 (north)	SH070 (south)			1.690		08E51	10E		1690		
1	418		OLD MEADOW VLY RD	411 BUCKS LAKE RD (west)	END			0.270		08F11	08E		270		
1	522		OLD MILL POND RD	SH070	END			0.227		08F24	08B		227		
1	509A	10	OLD RD	PLU NF	PLU NF			0.250		08F23	05G		250		
1	509A	20	OLD RD	PLU NF	509 SLOAT RD			0.350		08F23	06G		350		
1	509A		OLD RD	SH070	PLU NF			0.380		08F23	05G		380		
1	306B		OLD STATE HWY	SH089	306 SENECA RD			0.290		07E35	10B		290		
1	402A		OLD STATE HWY	SH070	END			0.650		08F12	10H		650		
2	CM08		OLD WAGON RD	SH089	END			0.189		08E41	09J		189		
2	CH04		OLSEN ST	SH036	CH01 LASSEN ST			0.090		07E23	03G		90		
2	AR01		OPENSHAW RD	207	AR02 MARIE DR			0.100		08E52	01B		100		
2	QU39		ORION WAY	SH070	END			0.066		08F11	07E		66		
2	AW06		OSPREY LOOP	AW01 L ALMANOR W DR (west)	AW01 L ALMANOR W DR (east)			1.480		07E33	02J		1480		
2	PH05		OTTER WAY	PH01 WOLF AVE	END			0.120		09F31	03C		120		
2	GE19		PAUTE TRAIL	GE46 YONKALLA TRL	GE23 TOLOWA TRL			1.122		08F34	09J		1122		
2	GE44		PAPOOSE TRAIL	GE42 WISHAM TRL	END			0.039		08F34	09J		39		
1	135		PARK AVE	SH070	END			0.019		09F	06H		19		
2	H807		PARK HILL DR	H804 WOODLAKE DR (west)	H804 WOODLAKE DR (east)			0.381		07E25	07A		381		
1	518		PARKERS RD	SH070	END			0.540		08F34	04E		540		
1	124B		PARKSIDE LN	124 ROCKY PT RD	END			0.239		09F31	03E		239		
1	H809		PARKSIDE WY	313 A-13	H804 WOODLAKE DR			0.045		07E25	08A		45		
1	102		PATTERSON ST	102A CHILCOOT AVE	SH070			0.218		09F	05G		218		
2	CH58		PEARL RD	CH56 LORRAINE DR	END			0.186		07E23	05G		186		
1	217		PECK VLY RD	112	END			0.640		08E41	02G		640		
2	CH53		PEHAR RD	CH13 FIRST AVE	CH52 PURDY RD			0.409		07E23	05G		409		
1	313A		PENINSULA DR	313 A 13	313C FIREHOUSE RD			2.000		07E24	06J		2000		
1	528		PENMAN LN	526 JAMISON RD (west)	526 JAMISON RD (south)			0.210		08F34	07G		210		
2	EQ38		PEPPARD FLAT RD	SH070	END			0.172		08F11	08J		172		
2	LP02		PIKE RD	511 MAIN ST	LP4 WARREN HL RD			0.120		08F41	08B		120		
2	AP09		PINE CIR	AP01 PONDEROSA DR	END			0.030		07E24	08G		30		
2	CE03		PINE CT	112	END			0.050		09F1	03C		50		
2	CL03		PINE ST	115	END			0.280		08F44	01B		280		
2	EQ12	1	PINE ST	END (west)	EQ11 FIRST ST			0.070		08F12	08A		70		
2	EQ12	3	PINE ST	EQ11 FIRST ST	EQ19 REESE AVE			0.220		08F12	08A		220		
2	EQ12	5	PINE ST	EQ19 REESE AVE	END (east)			0.070		08F12	08A		70		
2	GV07		PINE ST	112	SH089			0.100		08E41	04E		100		
2	JV06		PINE ST	JV02 CHURCH ST	JV03 ARASTRA ST			0.070		08F34	09A		70		
2	PE08		PINE TREE CT	PE05 EVERGREEN	END			0.052		08F34	08E		52		
2	CH33		PINE WY	CH31 RICHARDSON WY	CH25 CEDAR ST			0.350		07E23	04G		350		
1	202B		PINEBROOK WAY	202 GRNVL WOLF CR RD	END			0.180		08E	07A		180		
2	PL01		PINELEAF DR	414 BUCKS LAKE RD	END			0.693		07F15	07E		693		
2	PE01		PINION PINE CIR	PE04 LUNDY LN	PE02 SUGAR PINE LN			0.234		08F34	08E		234		
1	216	5	PIONEER RD	SH089	216 FORGAY RD			0.497		08E41	06J		497		
2	EQ05	20	PIONEER RD	END (west)	END (east)			0.495		08F11	08H		495		
2	EQ05		PIONEER RD	405 LEE RD	EW29 WEST ST			0.150		08F11	08J		150		
1	101		PLINCO MINE RD	8089	LAS CO			7.940		09E	08J		7940		
2	EQ09		PLU FAIRGROUND RD	SH070	EQ33			0.250		08F11	08J		250		

2017 PLUMAS COUNTY  
MAINTAINED ROAD DATA

Alphabetical

GROUP SEQUENCE	ROAD NUMBER	ROAD SEGMENT	ROAD NAME	FROM	[NUMBER AND NAME]	TO	AND NAME]	[NUMBER	LENGTH MILES	OTHER AREA	MAP NUMBER	MAP COORDINATE	REMARKS	MILEAGE FROM TABS	UN CONSTRUCTED	NON COUNTY
1	127		PLUMAS AVE	PTL		END			0.265	09F31	03C			265		
2	QU15		PLUMAS AVE	QU16	LEONARD AVE	SH070	LAWRENCE ST		0.090	08F11	08F			90		
2	CH07		PLUMAS ST	CH11	MELISSA AVE (west)	CH11	MELISSA AVE (east)		0.138	07E23	03G			138		
2	QU43		PLUMIE WY	SH070	LAWRENCE ST	END			0.193	08F11	08E			193		
2	AL01		POLE LINE RD	310	ALMANOR DR WEST (west)	310	ALMANOR DR WEST (east)		0.310	07E34	04C			310		
2	GE15		POMO TRAIL	GE14	MAUD TRL	END			0.380	08F34	09H			380		
2	AP05		PONDEROSA CIR	AP01	PONDEROSA DR	END			0.030	07E24	07G			30		
2	AP01		PONDEROSA DR	323A	BIG COVE RD	END			0.802	07E24	07G			802		
2	PE10		PONDEROSA DR	PE02	SUGAR PINE DR	END			0.148	08F34	05F			148		
2	EQ32		PONDEROSA ST	EQ18	FIFTH ST	EQ25	CLOUGH ST		0.077	08F12	09A			77		
2	AP07		PONDEROSA WY	AP01	PONDEROSA DR	AP02	MANZANITA WY		0.100	07E24	08G			100		
2	PE17		POPLAR CT	PE14	SEQUOIA DR	END			0.034	08F34	06E			34		
1	502	10	POPLAR VALLEY RD	PLU NF		8060			0.500	08F34	06E			500		
1	502		POPLAR VALLEY RD	506	GRAEAGLE JOHN R	PLU NF			0.250	08F34	07E			250		
1	513	5	PORT WINE RD	513	CHURCH ST	SIE CO			1.830	08F41	09B			1830		
1	114	10	PORTOLA MCLEARNS RD	IN PLU NF	SH089 TO	PTL			0.750	08F45	02E			750		
1	133		PORTOLA PARK RD	126	LAKE DAVIS RD	END			0.155	09F31	02C			155		
2	TV06		PORTSMOUTH ST	TV01	ANNE ST	TV08	CEMETERY ST		0.230	08E52	01F			230		
2	LP11		POST ST	LP10	SCHOOL ST	513	CHURCH ST		0.056	08F41	08B			56		
2	LP06		PRIMEAU DR	LP01	ARISTOCRACY DR	PTL			0.057	08F41	08B			57		
1	114		PTL MCLEARNS RD	SH089		PTL			6.360	08F45	02E			6360		
1	305	3	PTVL BUT RSVR RD	8045		PLU NF BDRY			7.230	07E	08G			7230		
1	305	15	PTVL BUT RSVR RD	PLU NF BDRY		SH089			2.300	07E34	09B			2300		
1	305	30	PTVL BUT RSVR RD	SH089		LAS NF BDRY			0.400	6	06C			400		
1	305	35	PTVL BUT RSVR RD	LAS NF BDRY		310	ALMANOR DR W		0.185	07E34	05D			185		
1	437		PURDY LN	SH070		END			0.300	08F11	06D			300		
2	CH52		PURDY RD	CH13	FIRST AVE	CH54	WATSON RD		0.551	07E23	05G			551		
1	406	10	QUINCY JCT RD	404	CHANDLER RD	END			0.510	08F11	03K			510		
1	406		QUINCY JCT RD	SH070		404	CHANDLER RD		2.600	08F11	08F			2600		
1	511	4	QUINCY LA PORTE D	SIE CO		LP7	GOLD ST		4.610	08F41	03G			4610		
1	511	1	QUINCY LA PORTE RD	SH070		PLU NF			2.100	08F12	08B			2100		
1	511	2	QUINCY LA PORTE RD	PLU NF		SIE CO			19.900	08F12	10E			19900		
1	511	3	QUINCY LA PORTE RD	SIE CO		SIE CO			3.470	08F	07C			3470		
1	511	6	QUINCY LA PORTE RD	511B	LA PORTE PNS RD	YUBA CO			9.182	08F41	08B			9182		
2	LP09		RABBIT CREEK RD	511	MAIN ST	END			0.109	08F41	08B			109		
2	AW09		RACCOON TR	AW04	LONG IRON DR	AW06	OSPREY LOOP		0.236	07E33	02J			236		
1	510		RADIO HILL RD	SH070		END			0.490	08F11	08H			490		
1	508B		RAIL ROAD ST	SH070		END			0.410	08F23	03B			410		
2	QU17		RAILWAY AVE	SH070	MAIN ST	END			0.170	08F11	08F			170		
1	121		RAMELLI GREIG RD	SH49		END			1.250	09F	06F			1250		
2	CH61		RED CEDAR CT	CH60	RED CEDAR WY	END			0.047	07E23	05F			47		
2	CH60		RED CEDAR WY	CH54	WATSON RD	END			0.117	07E23	05G			117		
2	BC01		RED RIVER DR	BC01	BAILEY CREEK DR	END			1.026	07E23	05G			1026		
2	PE16		RED WILLOW CT	PE14	SEQUOIA DR	END			0.045	08F34	08E			45		
2	EQ07		REDBERG AVE	SH070		EQ05	PIONEER RD		0.192	08F11	08J			192		
1	523		REDKEY WY	404	CHANDLER RD	END			0.018	08F12	08B			18		
2	AP08		REDWOOD CIR	AP01	PONDEROSA DR	END			0.030	07E24	08G			30		
2	EQ19		REESE AVE	EQ12	PINE ST	SH070			0.080	08F12	08A			80		
1	110		RENFRO LN	SH070		END			0.006	09F	05G			6		
2	CH43		REYNOLDS RD	SH036		END			0.150	07E23	04G			150		
2	CH31		RICHARDSON WY	CH29	FIRST ST	CH30	FARRAR DR		0.400	07E23	04G			400		
1	304		RICHBAR RD	SH070		END			0.450	07E1	02G			450		
1	329		RIVER BEND WY	SH147		END			0.140	07E25	08B			140		
2	CH21		RIVERSIDE AVE	CH20	FOURTH ST	CH16	FOURTH AVE		0.220	07E23	03H			220		
2	CH40		RIVERWOOD DR	CH38	EDGEWOOD DR	SH036			0.300	07E23	04G			300		



2017 PLUMAS COUNTY  
MAINTAINED ROAD DATA

Alphabetical

GROUP SEQUENCE	ROAD NUMBER	ROAD SEGMENT	ROAD NAME	FROM	[NUMBER AND NAME]	TO	[NUMBER AND NAME]	LENGTH MILES	OTHER AREA	MAP NUMBER	MAP COORDINATE	REMARKS	MILEAGE FROM TABS	UN CONSTRUCTED	NON COUNTY
2	QU14	1	ROCHE AVE	SH070		QU03 JACKSON ST		0.100		08F11	08F		100		
2	QU14	3	ROCHE AVE	QU03 JACKSON ST		QU31 LOUISIANA AVE		0.040		08F11	08F		40		
1	124		ROCKY POINT RD	SH070 (west)		SH070 (east)		2.273		09F31	03E		2273		
1	323		ROCKY PT CAMP GR R	SH089		END		1.000		07E34	07H		1000		
2	IF06		ROEDER AVENUE	END		IF08 FIFTH ST		0.300		08E51	04D		300		
2	EQ06		ROGERS AVE	405 LEE RD		EQ05 PIONEER RD		0.090		08F11	08J		90		
2	330		ROSEBURG CIR	322		END		0.180		07E24	3F		180		
1	416A		ROUNDHOUSE RD	SH070		END		0.360		08E51	10D		360		
1	317		RUSH CREEK RD	SH070		8065		1.320		07E	10G		1320		
1	427		RUTHERFORD AVE	419 GOLDEN EAGLE AVE		END		0.250		08F11	06C		250		
2	CH68		S SIERRA MDWS LN	CH11 MELLISSA AVE		END		0.054		07E23	03G		54		
1	428		SCHNEIDER CRK RD	414 BUCKS LAKE RD		8022 SCHNEIDER CRK		0.284		07F15	09D		284		
2	CH44		SCHOOL ST	CH28 CROSS ST		END		0.070		07E23	04G		70		
2	CM01		SCHOOL ST	CM04 CARTER ST		CM11		0.213		08E41	09J		213		
2	JV04		SCHOOL ST	JV02 CHURCH ST		JV03 ARASTRA ST		0.066		08F34	09A		66		
2	LP10		SCHOOL STREET	511 MAINT ST		END		0.160		08F41	08B		160		
2	PV05		SCOTT DRIVE	PV04 WEST ST		PV06 EAST ST		0.250		07E34	05D		250		
2	CH14		SECOND AVE	CH21 RIVERSIDE AVE		END		0.458		07E23	03H		458		
2	CH18		SECOND ST	CH16 FOURTH AVE		CH13 FIRST AVE		0.210		07E23	04H		210		
2	EQ15		SECOND ST	EQ14 MANSELL ST		EQ10 CEDAR ST		0.210		08F12	09A		210		
2	GV16		SECOND ST	GV18 KINDER AVE		GV14 HIGBIE AVE		0.114		08E41	03D		114		
1	311	1	SECTION OLD RBL RD	312		TEH CO		7.800		07E	02D		7800		
2	GE10		SEMINOLE TRAIL	GE09 SIOUX TRL		END		0.030		08F34	09H		30		
1	308		SENECA RD	SH089		305		10.130		07E35	10B		10130		
2	PET4		SEQUOIA DR	PE09 COTTONWOOD DR (north)		PE09 COTTONWOOD DR (south)		0.518		08F34	06E		518		
2	MR03		SETTLERS RD	MR03 MEADOW RD		END		0.358		07E23	03G		358		
1	202A		SETZER CAMP RD	202 GRNVL WOLF CR RD		SH089		0.110		08E	07E		110		
2	GE27		SHASTA TRAIL	GE46 YONKALLA TRL		SH089		0.616		08F34	09J		616		
2	GE08		SHAWNEE TRAIL	GE01 IROQUOIS TRL		GE06 HUPA TRL		0.200		08F34	09H		200		
2	EQ49		SHELLY LN	EQ13 CENTER ST		END		0.053		08F11	09J		53		
2	CH57		SHERMAN RD	CH56 LORRAINE DR		CH54 WATSON RD		0.404		07E23	05G		404		
2	GET7		SHOSHONI TRAIL	GET5 POMO TRL		END		0.090		08F34	09H		90		
2	WE11		SIERRA CT	WE10 VLY VIEW DR		END		0.050		09F11	03D		50		
2	534		SIERRA ESTATES DR	SH089		END		0.472		08F45	02G		472		
1	117		SIERRA VALLEY RD	SIE CO		107 DYSON LN		3.750		09F	08E		3750		
1	117A		SIERRA VLY MCN LN	117 SIERRA VLY RD		118 HARRIET LN		3.230		09F	07E		3230		
2	EQ37		SIERRA WY	END (north)		END (south)		0.252		08F11	09K		252		
2	PL07		SILVER CIRCLE	PL06 ABBET LN		END		0.015		07F15	07D		15		
1	412		SILVER CREEK RD	414 BUCKS LAKE RD		END		1.000		07F15	09D		1000		
2	VR04		SILVER SAGE TRAIL	VR01 VALLEY RCH RD		END		0.051		08F45	02D		51		
2	SS01		SILVERTIP SPRG DR	514		8180		0.294		08F41	06D		294		
2	GE09		SIoux TRAIL	GE01 IROQUOIS TRL		END		0.270		08F34	09H		270		
2	AW03		SLIM DR	AW01 LK ALMANOR W		AW04 LONG IRON		0.828		07E33	01H		828		
1	509B		SLOAT POPLR VLY RD	509 SLOAT RD		8060		0.340		08F23	07G		340		
1	509	10	SLOAT RD	PLU NF		PLU NF		0.100		08F23	06H		100		
1	509	20	SLOAT RD	PLU NF		503 OLD CROMBERG RD		2.400		08F23	06H		2400		
1	531		SMITH CREEK RD	SH070		PLU NF		0.900		08F23	06J		900		
1	435		SNAKE LAKE RD	524 GOLD RIDGE DR		END		0.190		08F34	08G		190		
2	CM09		SOBRERO WY	CM04 CARTER ST		END		2.350		07F15	06G		2350		
1	131		SOUTH DELLEKER RD	SH070		CM10		0.097		08E41	09J		97		
2	QU37		SOUTH LINDAN AVE	SH070		T32 INDUSTRIAL WY		0.266		09F31	04A		266		
1	434		SOUTH PADRE LN	SH070		QU03 JACKSON ST		0.133		08F11	08F		133		
2	EQ28		SOUTH REDBERG AVE	SH070		END		0.058		07F15	07E		58		
2	EQ48		SOUTH REDBERG CIR	EQ28 S REDBERG AVE		END		0.204		08F11	09J		204		
2	EQ48		SOUTH REDBERG CIR	EQ28 S REDBERG AVE		END		0.076		08F11	09J		76		



2017 PLUMAS COUNTY  
MAINTAINED ROAD DATA

Alphabetical

GROUP SEQUENCE	ROAD NUMBER	ROAD SEGMENT	ROAD NAME	FROM	[NUMBER AND NAME]	TO	AND NAME]	[NUMBER	LENGTH MILES	OTHER AREA	MAP NUMBER	MAP COORDINATE	REMARKS	MILEAGE FROM TABS	UN CONSTRUCTED	NON COUNTY
1	431		SPANISH CREEK RD	SH070		END			0.817		08F11	07E		817		
1	415A		SPANISH OAKS LN	415 KEDDIE RESORT RD		END			0.200		08E51	09D		200		
1	413		SPANISH RANCH RD	411 BUCKS LAKE RD (west)		END			1.000		07F15	07E		1000		
2	PL04		SPANISH VIEW CIR	PL02 SPANISH VIEW DR		END			0.040		07F15	08D		40		
2	PL02		SPANISH VIEW DR	PL01 PINE LEAF DR		END			0.506		07F15	07D		506		
2	QU22		SPRING ST	QU20 MONTEVISTA AVE		END			0.040		08F11	08E		40		
2	H811		SPRINGWOOD CIR	HB06 CEDAR LN		END			0.108		07E25	07A		108		
2	AP10		SPRUCE CIR	AP01 PONDEROSA DR		END			0.020		07E24	08G		20		
2	CL04		SPRUCE ST	115		END			0.060		08F44	01B		60		
1	401		SQUIRREL CREEK RD	SH070		END			2.260		08F	03D		2260		
1	512		ST LOUIS RD	511		SIF CO			4.440		08F41	07C		4440		
2	206		STAMPEL LANE RD	112		SH089			3.040		08E	08C		3040		
2	GV20		STANDART MINE RD	SH089		END			1.180		08E41	04G		1180		
2	CH10		STONE AVE	QU26 ALDER ST		END			0.080		08F11	08F		80		
1	316A	10	STOVER MOUNTAIN RD	SH036		CH07 PLUMAS ST			0.133		07E23	03G		133		
2	CH03		STOVER RD	LAS NF		END			1.250		07E23	06B		1250		
2	PE11		SUGAR PINE CT	CH02 FEATHER RIV DR		END			2.000		07E23	07E		2000		
2	PE02		SUGAR PINE DR	PE02 SUGAR PINE DR		END			0.120		07E23	03G		120		
2	QU47		SUMMERFIELD LN	PE04 LUNDY LN		PE10 PONDEROSA DR			0.134		08F34	05F		134		
2	EQ43		SUNRISE LN	QU17 RAILWAY AVE		END			0.321		08F34	06E		321		
2	MV01		SUNSET DR	SH070		END			0.089		08F11	08F		89		
2	EQ23		SYLVAN WAY	BE07 BELLAMY LN		END			0.090		08F11	08J		90		
2	PE13		TAMARACK CT	405A BELL LN		END			0.109		08F11	07D		109		
2	PE12		TAMARACK PL	PE12 TAMARACK PL		END			0.150		08F11	06J		150		
2	SS02		TAMARACK WY	PE09 COTTONWOOD DR		END			0.079		08F34	06E		79		
1	209		TAYLRLV TR STA RD	SS01 SILVERTIP SPRG		END			0.088		08F34	06E		88		
2	PV01		TERRACE DR	112 NORTH VALLEY RD		END			0.247		08F41	06D		247		
2	CH15		THIRD AVE	PV04 WEST ST		END			0.180		08E	08E		180		
2	CH19		THIRD ST	CH17 FIRST ST		END			0.170		07E34	05D		170		
2	EQ16		THIRD ST	CH13 FIRST AVE		END			0.230		07E23	04H		230		
2	GV24		THIRD ST	EQ12 PINE ST		END			0.210		07E23	04H		210		
2	IF01		THOMPSON AVE	GV13 HUDSON AVE		END			0.300		08F12	09A		300		
2	TV03		THOMPSON ST	IF02 CARROL AVE		END			0.043		08E41	03D		43		
2	PE07		TIMBER LN	IF04 WARREN ST		END			0.170		08E51	04D		170		
2	GE23		TOLOWA TRAIL	PE05 EVERGREEN		END			0.130		08E51	04D		130		
2	GE11		TOMAHAWK TRAIL	SH070		END			0.390		08E52	01F		390		
1	134		TOMMY'S LN	GE01 IROQUOIS TRL (west)		END			0.152		08F34	06E		152		
2	AV10		TOP OF THE WEST DR	SH070		END			1.330		08F34	09J		1330		
2	EQ47		TRILGY LN	AW06 OSPREY LOOP (west)		END			0.250		08F34	09H		250		
1	326		TWAIN STORE RD	EQ44 N MILL CREEK RD		END			0.200		08F35	04J		200		
2	CL01		UPPER MAIN ST	AW06 OSPREY LOOP (esat)		END			0.817		07E33	02J		817		
2	VR01		VALLEY RANCH DR	SH070		END			0.110		08F11	08J		110		
2	BE01		VALLEY VIEW DR	CL04 SPRUCE ST		END			0.250		07E1	04B		250		
2	WE10		VALLEY VIEW DR	SH089		END			0.130		08F44	01B		130		
2	PE19		VANESSA CT	BE07 BELLAMY LN		END			2.112		08F45	02D		2112		
2	BC14		VILLAGE DR	112		8008			0.470		08F11	08D		470		
1	119		VINTON TR STA RD	MH03 MTN VIEW RD		END			0.720		09F1	03D		720		
1	317A		VIRGILIA DEPOT RD	502 POPULAR VALLEY DR		END			0.070		08E41	06J		70		
2	GE32		W CHILULA TRAIL	BC13 MARINA DR		END			0.010		08E34	7E		10		
2	MR01		WAGON RD	SH070		END			0.447		07E24	0F7		447		
2	GE13		WAILAKI TRAIL	GE31 TOLOWA TRAIL		END			0.038		09F	05G		38		
				CH02 FEATHER RIVER		END			0.050		07E	10G		50		
				GE14 MAIDU TRL		END			0.131		08F34	09J		131		
						END			0.615		07E23	03G		615		
						END			0.040		08F34	09H		40		

2017 PLUMAS COUNTY  
MAINTAINED ROAD DATA

Alphabetical

GROUP SEQUENCE	ROAD NUMBER	ROAD SEGMENT	ROAD NAME	FROM	[NUMBER AND NAME]	TO	[NUMBER AND NAME]	LENGTH MILES	OTHER AREA	MAP NUMBER	MAP COORDINATE	REMARKS	MILEAGE FROM TABS	UN CONSTRUCTED	NON COUNTY
1	112A		WALKER MINE RD	112		112		2.070	08F	02F			2070		
2	BC11		WALSH CT	BC10 CREEKHAVEN DR		END		0.500	07E24	F6			500		
2	GE43		WAPPO TRAIL	GE19 PAULTE TRL		GE42		0.079	08F34	09J			79		
1	221		WARD CREEK RD	112 BECKWITH TAY RD		END		0.429	08E	10E			429		
1	312A		WARNER CREEK RD	312 (north)		312 (south)		0.640	07E	02D			640		
2	LP04		WARREN HILL RD	513 CHURCH ST		END		0.090	08F41	08B			90		
2	TV04		WARREN ST	TV01 ANNE ST		TV08 CEMETERY ST		0.230	08E52	01F			230		
2	GE20		WASHO TRAIL	GE19 PAULTE TRL		END		0.040	08F34	09J			40		
2	CH54		WATSON RD	CH13 FIRST AVE		SH036		0.771	07E23	05G			771		
2	EQ30		WELDON AVE	EQ06 ROGERS AVE		END		0.046	08F11	08J			46		
2	QU19		WEST HIGH ST	QU29 LEE AVE		END		0.150	08F11	08E			150		
2	EQ29		WEST ST	EQ08 MANZANITA WAY		EQ05 PIONEER RD		0.035	08F11	08J			35		
2	PV04		WEST ST	305		PV05 SCOTT DR		0.160	07E34	05D			160		
1	408		WEST'S RANCH RD	SH070 (north)		SH070 (south)		0.810	08F11	06E			810		
2	GE26		WHILKUT TRAIL	GE25 YOKUT TRL		END		0.040	08F34	09J			40		
2	BE06		WILDWOOD CT	BE01 VALLEY VIEW DR		END		0.050	08F11	08D			50		
2	CH72		WILDWOOD LN	CH70 MEADOWBROOK LOOP		END		0.134	07E23	03G			134		
2	CH51		WILLHOITE RD	CH13 FIRST AVE		CH54 WATSON RD		0.746	07E23	05G			746		
1	219		WILLIAMS VALLEY RD	112 MAIN ST		END		1.598	08E41	02F			1598		
2	GV17		WILLIAMS WY	GV14 HIGBIE AVE		GV11 LONDON AVE		0.187	08E41	03D			187		
2	CH22		WILLOW ST	CH13 FIRST AVE		SH036		0.130	07E23	03G			130		
2	CM05		WILLOW ST	CM04 CARTER ST (west)		CM04 CARTER ST (east)		0.160	08E41	09J			160		
1	201B		WILLOW WY	SH089 (north)		SH089 (south)		1.000	08E41	02E			1000		
2	BE04		WILLOW WY	BE01 VALLEY VIEW DR		END		0.030	08F11	08D			30		
2	CH41		WILLOW WY	SH036 (north)		SH036 (south)		0.180	07E23	03G			180		
2	GE21		WINTUN TRAIL	GE19 PAULTE TRL		GE28 KOROMINU TRL		0.243	08F34	09J			243		
2	GE42		WISHRAM TRAIL	GE46 YONKALLA TRL		END		0.498	08F34	09J			498		
2	GE52		WYOT TRAIL	GE47 NOMIAKI TRAIL		END		0.082				NEW ROAD	82		
2	PH01		WOLF AVE	127 PLUMAS AVE		PH04 GRIZZLY WY		0.208	09F31	03C			208		
2	HB04		WOODLAKE DR	HB01 MARY ANN LN (north)		HB01 MARY ANN LN (south)		0.759	07E25	08B			759		
2	GE51		YAHU TRAIL	GE47 NOMIAKI TRAIL		END		0.125				NEW ROAD	125		
2	GE45		YANA TRAIL	GE46 YONKALLA TRL		END		0.047	08F34	09J			47		
2	GE48		YUKI TRAIL	GE47 NOMIAKI TRAIL		END		0.033				NEW ROAD	33		
2	GE25		YOKUT TRAIL	GE46 YONKALLA TRL		GE23 TOLOWA TRL		0.220	08F34	09J			220		
2	GE46		YONKALLA TRAIL	SH089		END		1.047	08F34	09J			1047		
2	GE22		YUROK TRAIL	GE21 WINTUN TRL		END		0.060	08F34	09J			60		
1	120			SH070		END		0.040	09F31	03A			40		
1	124A			124		END		0.161	09F31	03E			161		
1	125			SH070 (west)		SH070 (east)		0.966	09F31	01J			966		
1	125A			125		END		0.114	09F32	02A			114		
1	211			112		207		1.070	08E	08C			1070		
1	315A			SH147		END		0.100	07E35	02C			100		
1	322			SH036		END		2.310	07E24	04F			2310		
1	322A			322		END		1.050	07E24	04F			1050		
1	324			SH036		END		0.409	07E23	08E			409		
1	327			SH147		END		0.218	07E35	03C			218		
1	403A			403 MT HOUGH CR LK R		END		0.256	08F12	03C			256		
1	416B			416 OLD HWY RD		END		0.150	08E51	10E			150		
1	523	3		PLU NF		PLU NF		0.186	08F	02F			186		
1	508A			508 HARRISON RD		PLU NF		0.079	08F23	05G			79		
1	508C			SH070		8056		0.100	08F23	04B			100		
1	514A	5		514 LTL GRASS VLY RD		END		0.200	08F41	05C			200		
2	BL01			521 BONTA		END		0.070	08F34	07H			70		
2	BL02			521 BONTA (west)		521 BONTA (east)		0.110	08F34	07H			110		
2	CH45			CH01 LASSEN ST		END		0.040	07E23	03G			40		

2017 PLUMAS COUNTY  
MAINTAINED ROAD DATA

Alphabetical

GROUP SEQUENCE	ROAD NUMBER	ROAD SEGMENT	ROAD NAME	FROM	[NUMBER AND NAME]	TO	AND NAME]	[NUMBER	LENGTH MILES	OTHER AREA	MAP NUMBER	MAP COORDINATE	REMARKS	MILEAGE FROM TABS	UN CONSTRUCTED	NON COUNTY
2	CH501			CH05 GAY ST		CH06 BRIDGE ST			0.047		07E23	03G			47	
2	CH65			CH37 BRENTWOOD DR		CH65			0.172		07E23	05F			172	
2	CM11			CM01 SCHOOL ST		CM03 MAIN ST			0.037		08E41	09J			37	
2	EQ33			EQ09 PLU FAIRGRND RD		EQ33			0.472		08F11	08J			472	
2	EQ34			EQ33		EQ33			0.123		08F11	08J			123	
2	EQ40			EQ27 ABERNETHY LN		END			0.038		08F11	08J			38	
2	EQ46			SH070		EQ43 SUNRISE IN			0.063		08F11	08J			63	
2	GV26			GV19 HOT SPRINGS RD (west)		GV19 HOT SPRINGS RD (east)			0.100		08E41	04F			100	
2	QU45			END (west)		END (east)			0.170		08F11	08H			170	
						COMPLETED-2/20/18 MDC			681.501							



## DEPARTMENT OF FACILITY SERVICES & AIRPORTS

198 ANDY'S WAY, QUINCY, CALIFORNIA 95971-9645  
(530) 283-6299 FAX: (530) 283-6103

Dony Sawchuk  
Director

Board Date: March 13, 2018

To: The Honorable Board of Supervisors

From: Dony Sawchuk, Director

**Subject: Approve and authorize Chair to sign service agreement with Heat Transfer Systems in the amount of \$12,329.80 to replace one HVAC unit at the Quincy Library.**

---

### Background

Recently, the heater core cracked in an HVAC unit located in the meeting room of the Quincy Library. Due to the age of the unit, it is not something that can be repaired; the entire unit must be replaced. Currently the meeting room is without heat and cannot be rented out to the public.

### Recommendation

Approve and authorize Chair to sign service agreement with Heat Transfer Systems in the amount of \$12,329.80 to replace one HVAC unit at the Quincy Library.

The above referenced agreement has been approved as to form by County Counsel and is on file with the Clerk of the Board.



ELLIOTT SMART  
DIRECTOR

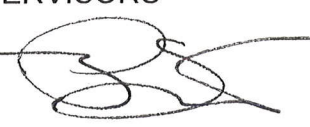
DEPARTMENT OF SOCIAL SERVICES  
AND PUBLIC GUARDIAN

Courthouse Annex, 270 County Hospital Rd., Suite 207, Quincy, CA 95971-9174

(530) 283-6350  
Fax: (530) 283-6368

DATE: MARCH 1, 2018

TO: HONORABLE BOARD OF SUPERVISORS

FROM: ELLIOTT SMART, DIRECTOR  
DEPT. OF SOCIAL SERVICES 

SUBJ: BOARD AGENDA ITEM FOR MARCH 13, 2018 CONSENT AGENDA

RE: AUTHORIZE THE DEPARTMENT OF SOCIAL SERVICES TO FILL A  
VACANT ELIGIBILITY SPECIALIT III AS SOON AS ADMINISTRATIVELY  
POSSIBLE

**It is Recommended that the Board of Supervisors**

Authorize Department of Social Services to fill a vacant 1.00 FTE Eligibility Specialist III effective immediately.

**Background and Discussion**

The Department of Social Services has experienced a vacancy in the class of Eligibility Specialist III. This position became vacant on due to the promotion of the prior incumbent to a supervisory position.

The Eligibility Specialist is the position in the Department that performs eligibility determinations and ongoing case management for economic assistance programs such as CalFresh and Medi-Cal. As your Board is aware, demands for these programs have been high due to the expansion of the Medicaid Program and due to the recessionary economy. While some of these elements have shown positive signs of change, it is the Department's expectation that our need for Eligibility Specialists will remain in place for some time.

**Financial Impact**

There is no financial impact to the County's General Fund as a result of taking this action because all funds to support this position come from federal, state and Realignment sources. The position is funded in the current year budget plan.

Copies: PCDSS Management Staff  
Ms. Nancy Selvage, Human Resources Director

Enclosures (3)

**Position Classification:** Eligibility Specialist III

**FTE:** 1.00

**Budgeted Position:** Yes

**Mandated Program:** Yes

**Position Description:**

This position is primarily responsible for reviewing and or performing the most difficult eligibility determinations for the Medi-Cal, CMSP and CalFresh (Foodstamp) programs. Eligibility determinations for the Medi-Cal and CMSP programs are critical to the mission of assuring that county citizens who do not have medical insurance or another payer for health care services have access, to the extent that they are eligible, to the State Medi-Cal and County CMSP programs. This also helps to assure that hospitals that are required by law to serve poor and indigent county residents receive payment for the services they provide. Eligibility determinations for the CalFresh (Foodstamp) program are a state mandated activity.

**Funding Sources:** Medi-cal is entirely funded by State General Fund and federal pass through dollars. There is a small apportionment of Realignment dollars that is part of the funding mix for this position, generally 15% of the cost of time spent performing CalFresh (Foodstamp) eligibility determinations. As is explained below, there are potential Realignment funding implications *when the position is left empty*.

**Special Considerations:** Department of Social Services funding mechanisms are structured on a very specific cost allocation plan that generates the distribution of fixed overhead costs based on filled positions. To the extent that a position is not filled, the fixed overhead costs redistribute themselves in uncontrolled and unpredictable ways adding unanticipated costs to other program areas particularly to program areas that contain Realignment dollars in their cost structure. It is in the County's best interests to avoid such a scenario.

**Reason for the Vacancy:** The reason for this vacancy is because the prior incumbent received a promotion.

## QUESTIONS FOR STAFFING CRITICAL POSITIONS WHICH ARE CURRENTLY ALLOCATED.

### Position: Eligibility Specialist – Medi-Cal/CalFresh Program

- Is there a legitimate business, statutory or financial justification to fill the position?

**Answer: Yes. Medi-Cal and CalFresh (Foodstamp) administration is a state mandated service. The Benefits Assistance Counselor performs eligibility determinations for these services**

- Why is it critical that this position be filled prior to the adoption of the County's budget this summer?

**Answer: The position is funded in the current budget and has no General Funds associated with it. Additionally the caseload is growing and the state provides funds to meet this growth.**

- How long has the position been vacant?

**Answer: The position became vacant effective September 8, 2017.**

- Can the department use other wages until the budget is adopted?

**Answer: No.**

- What are staffing levels at other counties for similar departments and/or positions?

**Answer: Other counties are structured in a very similar way. The state determines appropriate staffing levels and funds accordingly.**

- What core function will be impacted without filling the position prior to July 1?

**Answer: We will not be able to process applications for Medi-Cal, CalFresh in accordance with the state requirements.**

- What negative fiscal impact will the County suffer if the position is not filled prior to July 1?

**Answer: We will not expend state funds that have been allocated to this function and Realignment dollars will be disbursed to other programs costing the Department money.**

- A non-general fund department head need to satisfy that he/she has developed a budget reduction plan in the event of the loss of future state, federal or local funding? What impact will this reduction plan have to other County departments?

**Answer: The Department has developed a variety of budget reduction strategies that are dependent upon state policy decisions. Other Departments could be impacted by such reduction strategies.**

- Does the department expect other financial expenditures which will impact the general fund and are not budgeted such as audit exceptions?

**Answer: No.**

- Does the budget reduction plan anticipate the elimination of any of the requested positions?

**Answer: No.**

- Departments shall provide an estimate of future general fund support for the next two years and how the immediate filling of this position may impact, positively or negatively, the need for general fund support?

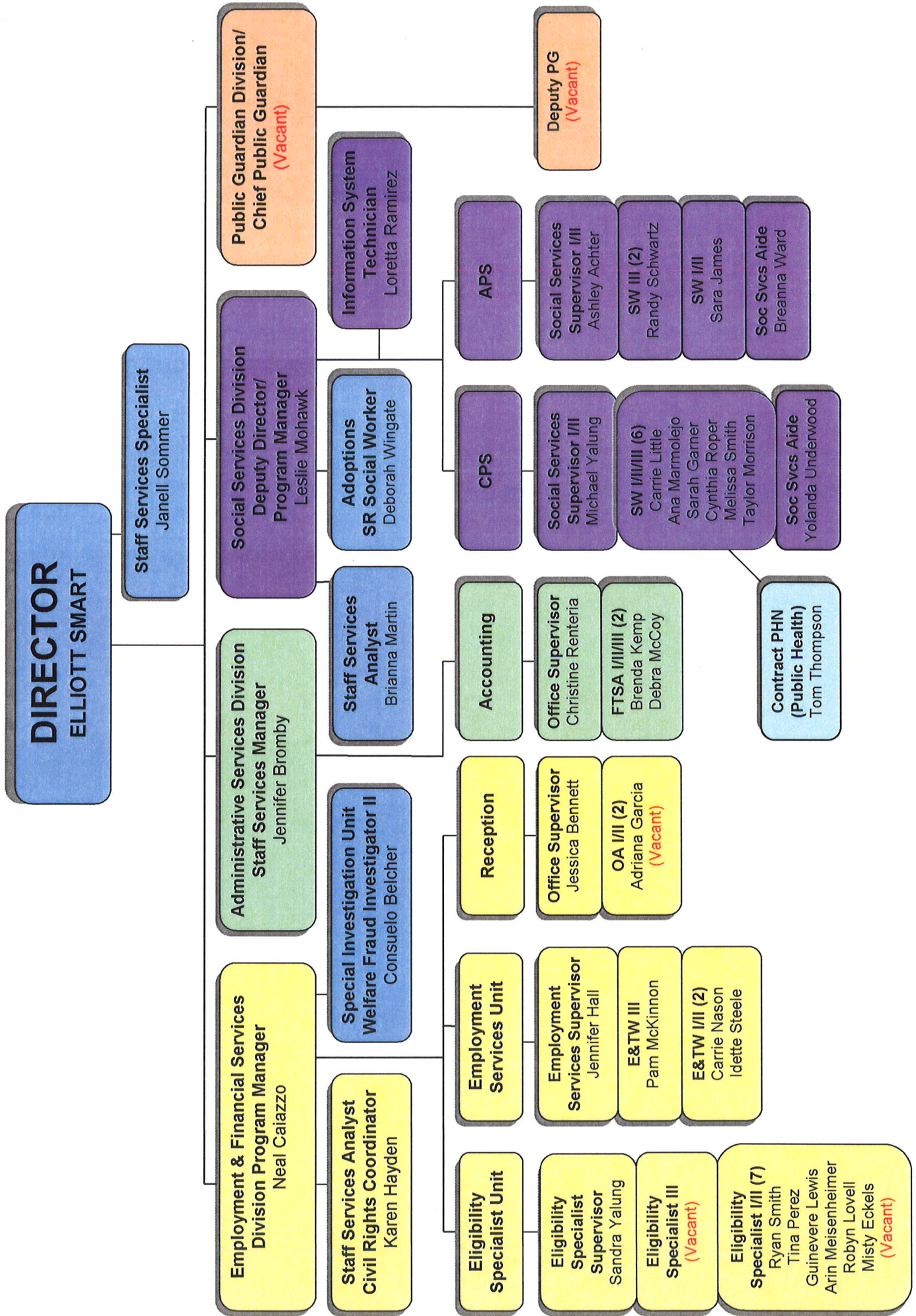
**Answer: The Department does not currently utilize County General Fund dollars. Filling this position does not change that.**

- Does the department have a reserve? If yes, provide the activity of the department's reserve account for the last three years?

- **Answer: The Department does have a reserve. The balance fluctuates depending upon a number of factors including whether or not the State achieves the base amount of collection for any given year.**



# PLUMAS COUNTY DEPARTMENT OF SOCIAL SERVICES & PUBLIC GUARDIAN







ELLIOTT SMART  
DIRECTOR

DEPARTMENT OF SOCIAL SERVICES  
AND PUBLIC GUARDIAN

Courthouse Annex, 270 County Hospital Rd., Suite 207, Quincy, CA 95971-9174

(530) 283-6350  
Fax: (530) 283-6368

DATE: FEBRUARY 28, 2018

TO: HONORABLE BOARD OF SUPERVISORS

FROM: ELLIOTT SMART, DIRECTOR  
DEPARTMENT OF SOCIAL SERVICES

SUBJ: BOARD AGENDA ITEM FOR MARCH 13, 2018, CONSENT AGENDA

RE: TEST RENTAL AND USE AGREEMENT FOR CALIFORNIA MERIT  
SYSTEM SERVICES PROGRAM PARTICIPANTS

**It is Recommended that the Board of Supervisors**

Approve and authorize the Director of the Department of Social Services to sign the enclosed Test Rental and Use Agreement for California Merit System Services Program Participants.

**Background and Discussion**

The Department of Social Services is a part of the 35 County Interagency Merit System (IMS) for services related to recruiting for and providing testing services for certain classes of employees. Under this arrangement, employees who test and are hired through the IMS system have permissive transfer rights to the same position in other IMS counties without having to re-test for such positions. IMS employees also have mandatory and permissive reinstatement rights to positions in the same county if they experience certain breaks in their employment.

Interagency Merit System Services are provided by Cooperative Personnel Services HR Consulting (CPS), which is a Joint Powers Authority serving the 35 IMS counties. Among the services provided by CPS is recruiting and testing for certain categories of employees in the Department. For testing candidates, CPS employs local proctors who are employees of the Department of Social Services. Proctors receive test materials, administer the tests in accordance with CPS protocols and maintain control over the receipt and return of test materials.

In the past, there had been no formal agreement in place that provided terms and conditions under which CPS test materials were made available to the IMS counties. CPS has now initiated a Test Rental and Use Agreement. That agreement is enclosed.

CPS has clarified a section of the proposed agreement concerning Section F.2. which provides that the client could be liable for exam security or testing materials being compromised. CPS has clarified that if proctors are trained by and paid by CPS (as is the case for Plumas proctors) then the county is not liable for any costs as they are described in Section F.2.

With that clarification in place, the Department recommends that the Board of Supervisors authorize the Director of the Department of Social Services to sign the agreement as the Board's designee. The agreement covers a two-year term.

#### **Other Agency Involvement**

The proposed agreement has been reviewed by the Office of County Counsel. It has been approved as to form by that office.

Copies:       DSS Management Staff (w/o enclosure)  
                  Ms. Nancy Selvage, Human Resources Director (with enclosure)

Enclosure

## TEST RENTAL AND USE AGREEMENT EXCLUSIVELY FOR CALIFORNIA MERIT SYSTEM SERVICES PROGRAM PARTICIPANTS

This Test Rental and Use Agreement ("Agreement") is by and between Cooperative Personnel Services, dba CPS HR Consulting, a California Joint Powers Authority ("CPS HR") and the Agency or Organization named in the signature block at the end of the Agreement ("Client").

- A. Purpose.** This Agreement defines CPS HR test rental, use and security policies and procedures provided exclusively for Merit System Services positions within counties in the State of California.

CPS HR develops and rents tests for many purposes and in many formats (including but not limited to print and electronic media). For that reason, some of the below paragraphs apply under certain circumstances. But, unless specifically limited, each paragraph applies to all testing purposes and formats.

**B. Ownership of CPS HR Tests.**

1. CPS HR owns all rights, title and interest, including copyrights, in all tests provided under this Agreement. They are the property of CPS HR and shall remain the property of CPS HR, even while in the custody of Client.
2. Additionally, tests that have been constructed or modified based on information provided by the client shall not be considered works made for hire, as that term is defined under U.S. Copyright Law. CPS HR shall own all rights, title and interest, including the copyright, in any test it creates for the Client.
3. Ownership of tests specifically developed for a client and of individual test questions supplied by Client, if any, shall be governed by a separate Agreement between CPS HR and Client.

- C. Test Materials.** Test Materials consist of all used and unused test booklets, proctor's instructions, proctor's manuals, scoring instructions, key sheets, key overlays, keyed booklets, scoring keys, instructions, CDs, DVDs or any audio files (for oral tests), and any other materials generated at the test administration, such as completed answer sheets (if applicable), scratch paper, note paper and the like.

- D. Test Security.** CPS HR security standards are designed to protect the mutual interests of all Clients that use Test Materials as well as the interests of applicants who take CPS HR tests. In order that no person may gain special advantage by having improper access to the material, all users must sign this Agreement and agree to fulfill its terms, before the Agreement is effective.

1. Client agrees to take all reasonable and diligent steps to keep CPS HR tests, sample tests, and testing processes confidential and free from unauthorized access and use. This includes, but is not limited to, client agreeing not to divulge, convey, copy in whole or part, duplicate, convert to another format or medium, or otherwise disseminate tests, portions of tests, or test materials.
  - (a) Client proctors are required to participate in CPS HR-provided proctor training on a yearly basis, or two weeks before his/her first test administration

2. For on-line tests, client further agrees to take all reasonable and diligent steps to prevent any modification to or reverse engineering of the testing software, and any transfer, storage or dissemination of tests or testing software and data on any storage medium or computer server other than those specifically authorized by CPS HR.

3. Should Client suspect any breach of test security, Client agrees to immediately notify CPS HR and immediately take all steps necessary to preserve evidence of or related to the breach, whether physical or electronic.

- (a) At any point, CPS HR reserves the right to require the use CPS HR-provided proctoring services should the Client be found to have breached any required test security standards. The Client would be responsible for payment of proctor time and travel costs for subsequent administrations until such date as CPS HR deems necessary.

**E. Test Review, Ordering and Administration.**

1. **Review Copies.** Review of CPS HR tests, regardless of format, is subject to the test security standards.

- (a) **Test Rental Division:** To help in deciding whether to rent exams, Client may review CPS HR stock tests and other stock test materials free of charge (e.g., stock supplements, structured interview packages, and specialized item sets).

- (b) **On-line Testing:** To help in deciding whether to utilize on-line testing, Client may review sample on-line tests free of charge.

2. **Ordering Testing Materials and Scheduling of Examinations.**

- (a) **Test Rental Division:**

- (i) Client shall rent one test booklet per candidate to be tested. CPS HR shall provide Client with Test Materials including instructions for administering the test, sufficient test booklets and any other material CPS HR deems necessary.

- (b) **On-line Testing:**

- (i) Client recognizes that CPS HR has no control over the functioning of the internet, and any problems with on-line testing due to the failure thereof are not attributable to CPS HR.

3. **After the test date.**

- (a) **Test Rental Division:**

- (i) Within 10 business days of the test date, Client shall return to CPS HR all Test Materials including all materials provided by CPS HR for the test administration. All

inventory forms shall be completed in full by the Client.

- (ii) Client shall not reuse printed tests on the test date or on any other date but shall return Test Materials to CPS HR, whether or not the test was administered.

**(b) On-line Testing:**

- (i) After the scheduled test date(s), CPS HR will suspend access to the on-line test site.
- (ii) Within 10 business days of the test date, Client shall destroy all CPS HR Test Materials including scratch paper and note paper in a way that make the materials unrecoverable.

**F. Billing, Pricing, and Payment.**

1. CPS HR shall bill Client at the billing address provided in Exhibit A, unless notified in writing of a new billing address.
2. CPS HR may charge Client for lost or compromised tests if Test Materials are compromised or not returned according to 3(a) above. In addition, CPS HR may charge Client for negligent actions of Client's proctors that result in exam materials and/or exam security being compromised. Client shall be liable for the actual cost associated with the creation of a substantially similar replacement test up to a maximum of \$15,000.
3. Client agrees to and shall pay all invoices within thirty (30) days of receipt of invoice.

**G. Candidate Inspections**

**1. Test Materials.**

CANDIDATE INSPECTION OF TEST MATERIALS SHALL **NOT** BE ALLOWED EXCEPT IN CASE OF ANSWER SHEETS AS DESCRIBED BELOW

**2. Answer Sheets.**

- (a) If a candidate files a protest regarding the scoring of his or her test, inspection of a candidate's own answer sheet(s) for the purpose of detecting whether any clerical or other error has been made in the scoring of the answer sheets shall be allowed, upon request by the Client, for a 10-business-day period immediately following the notification to the candidate of test results.
- (b) Candidates are not allowed to review the question booklet during this inspection period.

**H. Client Responsibilities.**

1. Client shall perform all parts of the testing process which are not performed by CPS HR. Client has the responsibility for assuring that the testing process performed by Client conforms to any applicable laws, rules or ordinances, and for the test as a whole.
2. Client is responsible for insuring that all persons who handle or have access to Test Materials in any capacity for Client shall do so in compliance with this Agreement, and are trained to handle Test Materials and administer tests before they do so.

**I. Legal Proceedings Involving Test Materials.**

1. If Client receives notice of any administrative or court proceeding involving a CPS HR test, or a request for disclosure of Test Materials, such as a subpoena, or a public records or freedom of information request, Client shall notify CPS HR of such request immediately and well before a response is due.

2. Upon CPS HR request, Client shall maintain the confidentiality of the Test Materials pending the grant or denial of a protective order or the decision of a court or administrative body as to whether the requested Test Materials must be disclosed under the applicable public records statute.
3. Client shall cooperate with CPS HR in seeking any relief necessary to maintain the confidentiality of the Test Materials.
4. Client shall indemnify and hold CPS HR harmless from and against any and all claims, costs, damages, losses, liabilities and expenses (including reasonable attorney fees and costs) arising out of or in connection with administration of a test, or with maintaining confidentiality of Test Materials.

**J. Term and Termination of Agreement.**

1. Term. This Agreement is effective beginning February 23, 2018 for two years thereafter through February 22, 2020 unless earlier terminated by either party as stated below.
2. Immediate Termination upon Material Breach. Either party may terminate this Agreement immediately upon any material breach by the other party. For purposes of this Agreement, but without limiting the meaning of material breach, any breach of the test security provisions, however minor, shall be considered a material breach. Client understands and acknowledges that immediate termination by CPS HR may result in the withholding or recall of Test Materials.
3. Termination Without Cause. CPS HR and Client may terminate the Agreement without cause upon thirty days written notice to the other party.
4. Return of Test Materials. Upon termination of the Agreement, Client shall immediately return to CPS HR any Test Materials that it possesses.

**K. Miscellaneous.**

1. **Notices.** Any notice to the parties required or permitted under this Agreement shall be given in writing and shall be sent to Client at the address provided for the Principal Signer and to CPS HR at 2450 Del Paso Road, Suite 220, Sacramento, CA 95834.
2. **Dispute Resolution; Remedies.**
  - (a) In the event of a dispute, the parties may agree to pursue mediation or either binding or nonbinding arbitration to resolve their dispute, under such rules as the parties may agree.
  - (b) Client acknowledges that breach of this Agreement may result in irreparable harm to CPS HR for which damages would be an inadequate remedy and, therefore, in the event of a breach, in addition to its rights and remedies otherwise available by law, CPS HR shall be entitled to seek equitable relief, including injunction.
3. **Attorney's Fees.** If any legal action or arbitration or other proceeding is brought to enforce or construe the term of this Agreement or because of an alleged dispute, breach or default in connection with any provision of this Agreement, the successful or prevailing party shall be entitled to recover reasonable attorney's fees and other costs incurred in that action, arbitration or proceeding in addition to any other relief to which it may be entitled.

4. **Waiver.** The failure of any party at any time or times to require performance of any provisions of this Agreement shall in no manner affect its right to enforce such provision at a later time. Nor shall the waiver by either party of a breach of any provision of this Agreement be taken or held to be a waiver of the provision itself. No waiver shall be enforceable unless made in writing and signed by the party granting the waiver.
5. **Entire Agreement; Modifications.** This Agreement constitutes the entire Agreement between the parties regarding the subject matter hereof and supersedes all other Agreements, representations and warranties. All modifications and supplements to this Agreement must be in writing and signed by both parties.
6. **Counterparts; Facsimile Signature; Electronic Signature.** This Agreement may be executed in any

number of counterparts. If this Agreement or any counterpart is signed and then faxed or e-mailed by PDF or otherwise, the faxed or e-mailed copy bearing the signature shall be as good as the original wet-ink signed copy for all intents and purposes.

7. **Interpretation; Jurisdiction.** This Agreement shall be interpreted and enforced under the laws of the State of California and jurisdiction shall be in Sacramento County, California. The Agreement shall be interpreted in a fair and balanced manner to best preserve its intent, and without bias against the drafter.
8. **Authority to Sign.** The person signing this Agreement on behalf of the Client (the Principal Signer) represents that he or she is the head of the agency or is otherwise duly authorized to sign this Agreement and to bind the Client.

**Principal Signer** By signing below, I represent that the persons(s) listed in Exhibit A and on any attached sheets is/are authorized to handle CPS HR Test Materials on Clients behalf. I affirm that I will handle all CPS HR Test Materials in accordance with the terms of the CPS HR Test Rental Agreement then in effect, and that I will ensure all individuals handling and/or administering tests are properly trained.

**Cooperative Personnel Services dba  
CPS HR Consulting,  
A California Joint Powers Authority**

By: \_\_\_\_\_  
Authorized Signature

Name: Christina Batorski Peacock

Title: Manager, Recruitment Solutions

Date: \_\_\_\_\_

**Merit System Services Contact Information:**

CPS HR Consulting  
Attn: MSS  
2450 Del Paso Road, Suite 220  
Sacramento CA 95834  
  
Telephone: 916.471.3507  
Fax: 916.648.1211 / E-mail: [mss@cpsshr.us](mailto:mss@cpsshr.us)

Approved as to form:

 2/24/2018  
**Gretchen Stuhr**  
Deputy Plumas County Counsel

**Client**

By: \_\_\_\_\_  
Authorized Signature (Head of County)

Name: \_\_\_\_\_

Title: \_\_\_\_\_

Email: \_\_\_\_\_

Date: \_\_\_\_\_

By: \_\_\_\_\_  
Authorized Signature (Director of Social Services)

Name: \_\_\_\_\_

Title: \_\_\_\_\_

Email: \_\_\_\_\_

Date: \_\_\_\_\_

By: \_\_\_\_\_  
Authorized Signature (Director of Child Support Services)

Name: \_\_\_\_\_

Title: \_\_\_\_\_

Email: \_\_\_\_\_

Date: \_\_\_\_\_

## Exhibit A

### Authorized Representative(s) *(use an additional page if needed)*

By signing as an Authorized Representative, I affirm that I will handle all CPS HR Test Materials in accordance with the terms of the CPS HR Test Rental Agreement then in effect.

Name, Title	Signature
E-mail Address	Phone Number

Name, Title	Signature
E-mail Address	Phone Number

Name, Title	Signature
E-mail Address	Phone Number

Name, Title	Signature
E-mail Address	Phone Number

Name, Title	Signature
E-mail Address	Phone Number

Name, Title	Signature
E-mail Address	Phone Number

## II. Billing Contact

Contact Name and Title		
Agency		
Street Address, City, State, Zip		
E-Mail	Phone Number	Fax Number

## III. Physical Address

Agency / Department Name
Street Address, City, State, Zip

**PLUMAS COUNTY CLERK~RECORDER**

Recorder Division (530) 283-6218  
Elections Division (530) 283-6256



520 Main Street, Room 102, Courthouse  
Quincy, CA 95971 Fax: (530) 283-6155

DATE: March 1, 2018

TO: The Honorable Board of Supervisors

FROM: Kathy Williams, Plumas County Clerk-Recorder

SUBJECT: Authorize the County Clerk-Recorder Department to  
recruit and fill the funded and allocated 1.0 FTE  
Lead Deputy Clerk-Recorder with a future start  
date of June 30, 2018, created by promotion.

Kathy Williams

Clerk – Recorder

Registrar of Voters

kathywilliams@countyofplumas.com

Melinda Rother

Assistant

melindarother@countyofplumas.com

**Background**

On June 29, 2018, the current Lead Deputy Clerk-Recorder will be promoted to the Assistant County Clerk-Recorder, creating a vacancy in her position. Due to current budgetary limitations, the department will not be able to fund an overlap of positions and accomplish necessary training. In order to facilitate a smooth transition during an especially intense election cycle, the department needs to recruit and develop a qualified list of applicants and fill the position with a specified starting date of June 30, 2018.

**Recommendation**

It is recommended that the Board authorize the County Clerk-Recorder to recruit and fill the funded and allocated 1.0 FTE Lead Deputy Clerk-Recorder position that will be created by promotion within the department now with a future state date of June 30, 2018.



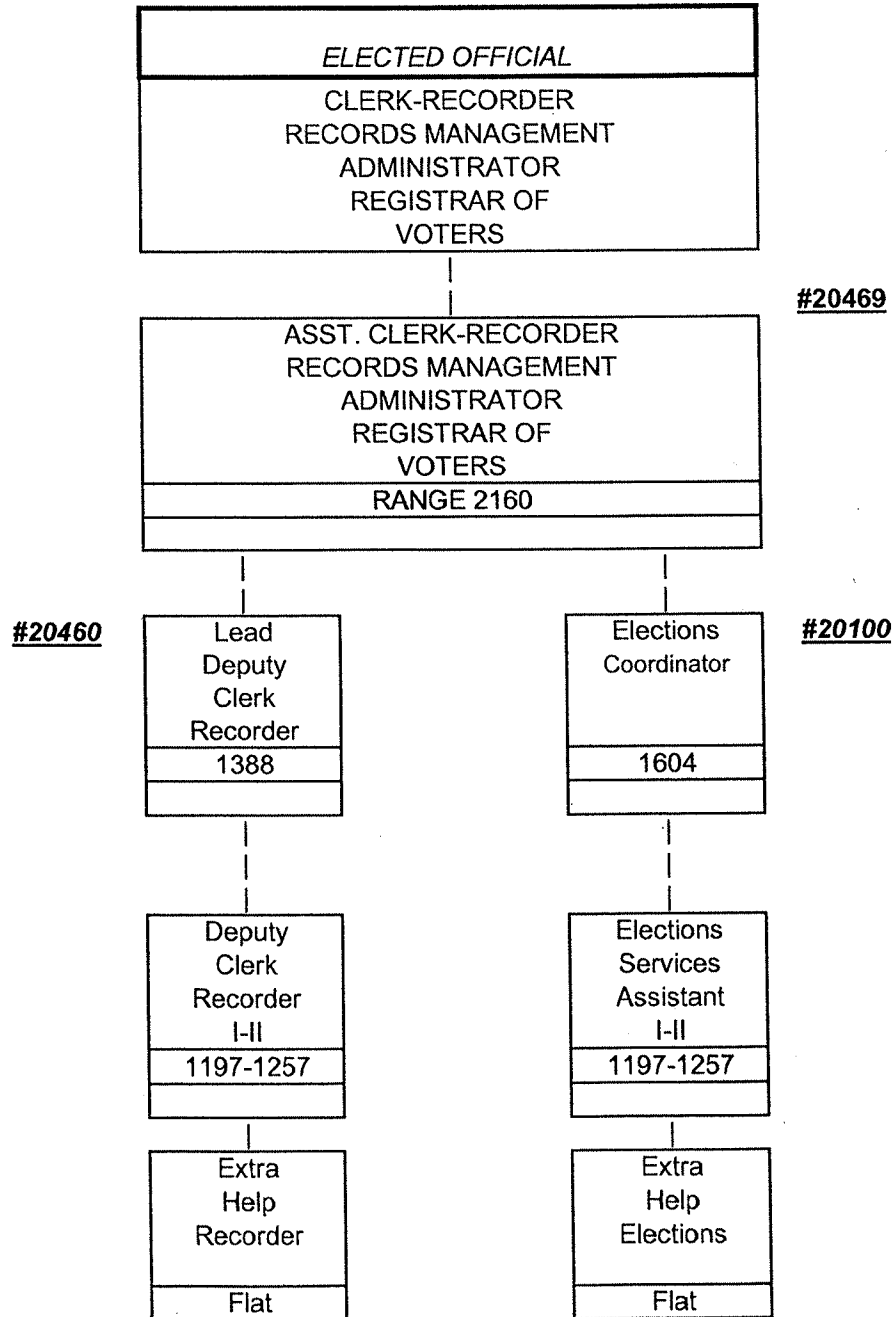
QUESTIONS FOR STAFFING CRITICAL POSITIONS  
WHICH ARE CURRENTLY ALLOCATED

**LEAD DEPUTY CLERK-RECORDER**

- Is there a legitimate business, statutory or financial justification to fill the position?  
***Having a Lead Deputy Clerk-Recorder is imperative in leading the Clerk-Recorder division of the department through daily and complex recording decisions as they arise.***
- Why is it critical that this position be filled at this time?  
***We are requesting that this position be filled as soon as the incumbent moves to her new position on June 29, 2018 to facilitate a smooth transition during peak election cycles.***
- How long has the position been vacant? ***It will become vacant on June 30, 2018.***
- Can the department use other wages until the next budget cycle? ***The department's wage and benefits portion of the 2017/18 budget includes funding for this position.***
- What are staffing levels at other counties for similar departments and/or positions? ***Most, if not all other counties have lead positions that are immediate supervisors of other staff responsible for daily functions of the divisions in the department.***
- What core function will be impacted without filling the position prior to July 1? ***Several county functions such as the November 6, General Election, daily land title recording transactions, monthly auditor reports, monthly accounting functions and daily staff supervision would all be affected.***
- What negative fiscal impact will the County suffer if the position is not filled prior to July 1? ***None.***
- A non-general fund department head needs to satisfy that he/she has developed a budget reduction plan in the event of the loss of future state, federal or local funding. What impact will this reduction plan have to the other County departments? ***None.***
- Does the department expect other financial expenditures which will impact the general fund and are not budgeted such as audit exceptions? ***No.***
- Does the budget reduction plan anticipate the elimination of any of the requested positions? ***No.***
- Departments shall provide an estimate of future general fund support for the next two years and how the immediate filling of the positions may impact positively or negatively the need for general fund support? ***None.***
- Does the department have a reserve? ***N/A.*** If yes, provide the activity of the department's reserve account for the last three years?

## ORGANIZATIONAL CHART

### CLERK-RECORDER & ELECTIONS





16

# Plumas County Public Health Agency

Andrew Woodruff, MPH, Acting Director • Mark Satterfield, M.D, Health Officer  
270 County Hospital Road, Suite 206, Quincy, CA 95971 • (530) 283-6337 • Fax (530) 283-6425

**Date:** February 8, 2018  
**To:** Honorable Board of Supervisors  
**From:** Andrew Woodruff  
**Agenda:** Consent Item for March 6, 2018

**Item Description/Recommendation:** Approve and direct the Chair to sign Agreement Number PARTC1819UCD with the University of California Davis Campus in the amount of \$12,800.00 related to the Ryan White PART C Program for Fiscal Year 2018-2019:

**History/Background:** As the Board is aware, Plumas County Public Health Agency has served as fiscal and administrative agent for the various HIV/AIDS programs for Plumas, Sierra, Lassen, Modoc, and Siskiyou Counties. Plumas County Public Health Agency will continue to serve to our five county regions for the Ryan White Programs.

Ryan White Part B funds provide for the planning, development and delivery of comprehensive outpatient and support services for people with HIV/AIDS and their families within the five (5) county regions of Modoc, Lassen Plumas Siskiyou, and Sierra counties. The program is designed to provide direct medical and psychosocial care, support services such as food, housing and utilities, and case management services. The goal of the program is to prolong the health and productivity of those living with AIDS and reduce or avoid future HIV/AIDS health care costs.

Ryan White Part C funds provide for direct outpatient HIV primary care that includes HIV counseling, testing & referral, medical evaluation and clinical care, and referral to specialty and other health services. The program maintains four HIV clinic sites within the five county regions to provide these services. Services available to clients include primary medical care, HIV specialty care, laboratory services, medications, dental care, nutrition counseling, psychosocial counseling, health education and risk reduction counseling, medication adherence counseling and nutritional supplements.

**Fiscal Impact:** There is no financial impact on the County General fund. The Ryan White PART C subcontracts are fully funded through the Health Resources and Service Administration (HRSA). The funding is included in the approved County Budgets as follows: Budget Units 70559 (HRSA) line item 521900 (Professional Services).

This subcontract has been reviewed and approved by County Counsel, a copy of which is on file with the Clerk of the Board for your review.

Please contact me if you have any questions, or need additional information. Thank you.



**PLUMAS COUNTY FLOOD CONTROL & CONSERVATION DISTRICT**

1834 East Main Street, Quincy, CA 95971

Telephone: (530) 283-6268

**AGENDA REQUEST**

For the March 13, 2018 meeting of the Plumas County Board of Supervisors

March 5, 2018

To: Honorable Board of Supervisors

From: Robert Perreault – Manager, Flood Control and Water Conservation District

A handwritten signature in blue ink, which appears to read "Robert Perreault", is written over the "From:" line.

Subject: Consider Approval of a Supplemental Budget Request to Increase Operations Expense (527900) and Chester Diversion Dam Expense (528500) Using Projected Fund Balance as of June 30, 2018. Discussion and possible action. **(Four/Fifths Vote)**

**Background:**

On September 19, 2017, the Plumas County Board of Supervisors adopted Resolution No. 17-8287, pertaining to the adoption of the final budget for Plumas County, which included the Public Works Flood Control District.

As of February 28, 2018, the District had incurred expenditures of \$22,708 relating to the maintenance of Lindan Channel, and \$26,246 relating to the maintenance of the Chester Diversion Dam. In the case of Lindan Channel, the scope of work associated with the project was not anticipated at the time the budget was adopted. In the case of the Chester Diversion Dam, this project went over budget due to unanticipated work that needed to be done on this project, as requested by the State of California Department of Water Resources (Flood Project Integrity and Inspection Branch).

It is projected that the Fund Balance for the Flood Control District will be in excess of \$80,000.00 as of June 30, 2018 (see Exhibit A), and as a result, the District is recommending that the Board of Supervisors approve the attached budget request to allow the District to pay for these projects.

Attached is a completed "Budget Transfer" form signed by the Department's fiscal officer and the County Auditor.

**Recommendation:**

The Flood Control Manager respectfully recommends that the Board of Supervisors authorize the Flood Control District to use its fund balance to increase the Operations Expense (527900) and Chester Diversion Dam Expense (528500) line items.

Attachment: Exhibit A – Flood Control Cash Position and Projections  
Budget Transfer Request

**COUNTY OF PLUMAS**  
**REQUEST FOR BUDGET APPROPRIATION TRANSFER**  
**OR SUPPLEMENTAL BUDGET**

TRANSFER NUMBER

(Auditor's Use Only)

Department: Flood Control

Dept. No: 26100

Date 2/28/2018

The reason for this request is (check one):

**Approval Required**

- A. ☐ Transfer to/from Contingencies OR between Departments  
 B. ☒ Supplemental Budgets (including budget reductions)  
 C. ☐ Transfers to/from or new Fixed Asset, within a 51XXX  
 D. ☐ Transfer within Department, except fixed assets  
 E. ☐ Establish any new account except fixed assets

Board  
 Board  
 Board  
 Auditor  
 Auditor

☐ **TRANSFER FROM OR**

☒ **SUPPLEMENTAL REVENUE ACCOUNTS**

(CHECK "TRANSFER FROM" IF TRANSFER WITHIN EXISTING BUDGET, CHECK "SUPPLEMENTAL REVENUE" IF SUPPLEMENTAL, NEW UNBUDGETED REVENUE)

Fund #	Dept #	Acct #	Account Name	\$ Amount
0208	26100	10100	Cash - Fund Balance	39,000.00
Total (must equal transfer to total)				39,000.00

☒ **TRANSFER TO OR**

☐ **SUPPLEMENTAL EXPENDITURE ACCOUNTS**

(CHECK "TRANSFER TO" IF TRANSFER WITHIN EXISTING BUDGET, CHECK "SUPPLEMENTAL EXPENDITURE" IF SUPPLEMENTAL, NEW UNBUDGETED EXPENSE)

Fund #	Dept #	Acct #	Account Name	\$ Amount
0208	26100	527900	Operations	16,000.00
0208	26100	528500	Chester Diversion Dam	23,000.00
Total (must equal transfer to total)				39,000.00

Supplemental budget requests require Auditor/Controller's signature

Please provide copy of grant award, terms of award, proof of receipt of additional revenue, and/or backup to support this request.



In the space below, state (a) reason for request, (b) reason why there are sufficient balances in affected accounts to finance transfer, (c) why transfer cannot be delayed until next budget year (attach memo if more space is needed) or (d) reason for the receipt of more or less revenue than budgeted.

A) Operations Expense higher than budgeted for 17/18 due to work done on Lindan Channel; Unanticipated work done on Lindan Channel in FY17/18

B) Cash projections for 6/30/18 expected to come in at \$123,000

C) Payment needs to be made from FY17/18 budget

D) \$111,750 of water service fees rec'd in 17/18 for 16/17 not factored into original cash projections.

Approved by Department Signing Authority: Damien Frank

☒ Approved/ Recommended ☐ Disapproved/ Not recommended

Auditor/Controller Signature: [Signature]

Board Approval Date: \_\_\_\_\_ Agenda Item No. \_\_\_\_\_

Clerk of the Board Signature: \_\_\_\_\_

Date Entered by Auditor/Controller: \_\_\_\_\_ Initials \_\_\_\_\_

### **INSTRUCTIONS:**

Original and 1 copy of ALL budget transfers go to Auditor/Controller. If supplemental request they must go to the Auditor/Controller. Original will be kept by Auditor, copies returned to Department after it is entered into the system.

Supplemental transfer must have Auditor/Controllers signature. Auditor/Controller will forward all signed, supplemental transfers to the Board for approval.

If one copy of agenda request and 13 copies of Board memo and backup are attached, the entire packet will be forwarded, after all signatures are obtained, to the Clerk of the Board. If only the budget form is sent, it will be returned to the Department after all signatures are obtained.

Transfers that are going to be submitted to the Board for approval:

- A. Must be signed by the Auditor/Controller; if supplemental must be signed by the Auditor/Controller.

## Exhibit A

### Flood Control Cash Position and Projections As of 2/27/18; through 6/30/18

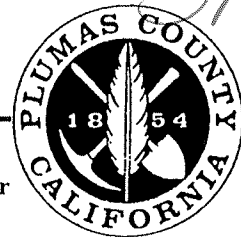
	Expenditure	Revenue	Balance
CASH BALANCE AS OF 2/27/18			\$ 62,723.25
Tax Revenue (to be rec'd ~April, 2018)		\$ 45,000.00	\$ 107,723.25
Water Service Charges (to be rec'd by 6/30/18)		\$ 123,000.00	\$ 230,723.25
Remaining payments to DWR	\$ (54,965.00)		\$ 230,723.25
Projected remaining expenditures for LDWTP	\$ (45,000.00)		\$ 175,758.25
Projected remaining admin expenditures by DPW	\$ (9,179.65)		\$ 130,758.25
A87 Charges: Q1-Q4	\$ 9,046.50		\$ 121,578.60
Tax Admin Fees	\$ (1,365.00)		\$ 130,625.10
Projected (unknown) misc. expenses	\$ (2,500.00)		\$ 129,260.10
			\$ 126,760.10
<b>PROJECTED CASH BALANCE AS OF 6/30/18</b>			<b>\$ 126,760.10</b>

<b>Flood Control Remaining Needs through 6/30/18</b>	Expenditure
To Public Works - Outstanding Lindan Ave invoices	\$ (16,045.58)
To Public Works - Outstanding Chester Div. Dam invoice	\$ (26,245.78)
	<b>\$ (42,291.36)</b>

Projected remaining cash based on supplemental budget increase \$ 84,468.74

# PLUMAS COUNTY DEPARTMENT OF PUBLIC WORKS

1834 East Main Street, Quincy, CA 95971 – Telephone (530) 283-6268 Facsimile (530) 283-6323  
Robert A. Perreault Jr., P.E., Director John Mannle, P.E., Asst. Director Joe Blackwell, Deputy Director



## AGENDA REQUEST

for the March 13, 2018 Meeting of the Plumas County Board of Supervisors

Date: March 5, 2018

To: Honorable Board of Supervisors

From: Robert Perreault, Director of Public Works

A handwritten signature of Robert A. Perreault in black ink.

Subject: Presentation of the Lee Road Safety Improvement Project - Project Study Report, and Introduction and waiving of the first reading of an ordinance amending sections of Plumas County Code pertaining to the addition of parking restrictions along Lee Road from Quincy Junction Road to Mill Creek Road in Quincy; discussion and possible action.

## Background:

In 2015, the Plumas County Transportation Commission received a Sustainable Communities Grant to draft the County's first ever Active Transportation Plan – Pedestrian/Bicycle Plan. The plan is has been completed with the adoption by the Plumas County Transportation Commission on January 22, 2018.

The plan has generated considerable interest from all communities within Plumas County and has increased awareness of pedestrian and bicycle safety issues within Plumas County. One roadway segment that has garnered recent attention is Lee Road in Quincy, from its intersection with Quincy Junction Road to its intersection with North Mill Creek Road.

The Lee Road Safety Improvement Project – Project Study Report (PSR) is an engineering document that identifies roadway deficiencies as they pertain to pedestrian and bicycle use. Design and construction details are subject to further design modification.

Specific complaints associated with pedestrian and bicycle safety along Lee Road in the vicinity of the Plumas County Fairgrounds, prompted Public Works staff to evaluate the pedestrian and bicycle safety issues of this roadway.

Lee Road, in the vicinity of the Plumas County Fairground, receives considerable pedestrian and bicycle traffic due to the activities located at the fair, the employees of the Sierra Pacific Mill, the nearby Plumas Charter School and Quincy/East Quincy cross traffic (due to the flat grade.)

After review of the identified pedestrian and bicycle safety issues associated with Lee Road, Public Works staff established a project study area. The Lee Road Project Study Area begins at the Lee Road intersection with Quincy Junction Road and extends eastward to the intersection of Mill Creek Road. The Lee Road Project Study Area and project segments are shown on Exhibit 1.



Along the Lee Road Study Area, pedestrians and bicyclists cannot safely share the roadway with motor vehicles, including truck traffic, due to high traffic volumes and existing speed limits. Pedestrians and Bicyclists may use paved shoulders where they exist.

A field review was conducted by Public Works staff to document existing site conditions and verify identified safety concerns. Following this field review, after review of drawings depicting travelled lanes and shoulder width, staff has identified areas along the Lee Road study area that require safety improvements. These areas have been identified based on the lack of paved shoulders and how vehicles utilize parking along the roadway.

The identified safety concerns and project recommendations are set forth in the attached Lee Road Safety Improvement Project - Project Study Report. The goal of the project, as set forth in Plumas County's Active Transportation Program – Pedestrian/Bicycle Plan, is to improve Lee Road from the intersection of Quincy Junction Road to Mill Creek Road to provide for Class II – On-street Bike Lanes. Class II bike lanes provide for bicycle accessible shoulders that are between 4-5 feet in width.

Funding for completing the recommended improvements is constrained and as such, completion of the project will take place over a period of time and in phases. These phases are outlined in detail in the project study report.

The first of these phases includes establishing 4 feet of width outside of the fog line that can be used by pedestrians and bicyclists. The attached ordinance sets forth "No Parking" areas where vehicles cannot park without encroaching into this shoulder area and prohibits vehicles from parking within four (4) feet of the fog line.

As there will be no foreseeable physical change in the environment, a Notice of Exemption has been prepared for this project in compliance with CEQA.

The attached ordinance has been approved by County Counsel as to form.

**Recommendation by Public Works:**

The Director of Public Works respectfully recommends that the Board of Supervisors approve the Lee Road Safety Improvement Project - Project Study Report and approve and waive the first reading of an ordinance amending sections of Plumas County Code pertaining to the addition of parking restrictions along Lee Road from Quincy Junction Road to Mill Creek Road in Quincy.

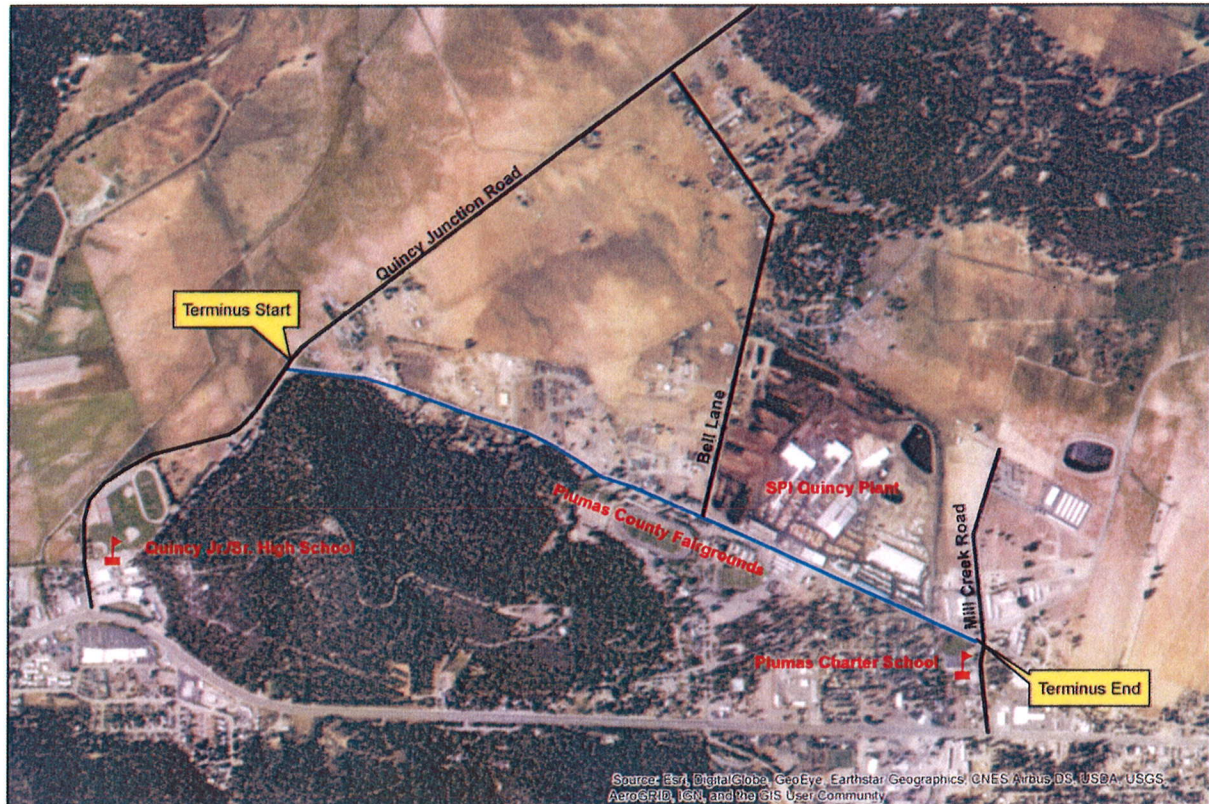
Attachments: Lee Road Safety Improvement Project – Project Study Report (PSR)  
Ordinance adding parking restrictions on Lee Road  
Notice of Exemption



# Lee Road Safety Improvement Project

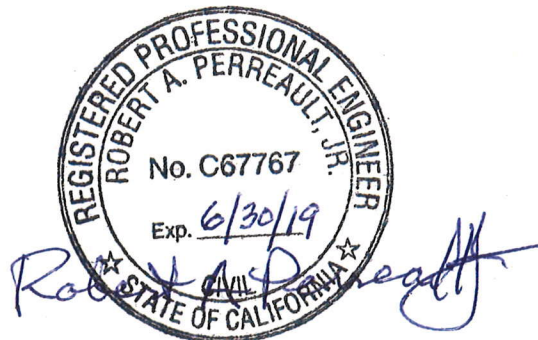
## Project Study Report

February 16, 2018



### Prepared by Plumas County Department of Public Works

1834 East Main Street, Quincy, CA 95971 – Telephone (530) 283-6268 Facsimile (530) 283-6323  
Robert A. Perreault Jr., P.E., Director John Mannle, P.E., Asst. Director Joe Blackwell, Deputy Director



# **Lee Road Safety Improvement Project**

## **Project Study Report**

### **Introduction**

In 2015, the Plumas County Transportation Commission received a Sustainable Communities Grant to draft the County's first ever Active Transportation Plan – Pedestrian/Bicycle Plan. The plan has been completed with the adoption by the Plumas County Transportation Commission on January 22, 2018.

The plan has drawn considerable interest from all communities within Plumas County and has increased awareness of pedestrian and bicycle safety issues within Plumas County.

One roadway segment that has garnered recent attention is Lee Road in Quincy, from its intersection with Quincy Junction Road to its intersection with North Mill Creek Road.

The Lee Road Safety Improvement Project – Project Study Report is a preliminary document that identifies roadway deficiencies as they pertain to pedestrian and bicycle use. Design and construction details are subject to further modification.

### **Purpose and Need**

Specific complaints associated with pedestrian and bicycle safety along Lee Road in the vicinity of the Plumas County Fairgrounds, prompted Public Works staff to evaluate the pedestrian and bicycle safety issues of this roadway.

Lee Road in the vicinity of the Plumas County Fairground receives considerable pedestrian and bicycle traffic due to the activities located at the fair, the employees of the Sierra Pacific Mill, the nearby Plumas Charter School, and Quincy/East Quincy cross traffic (due to the flat grade.)

After review of the identified pedestrian and bicycle safety issues associated with Lee Road, Public Works staff established a project study area. The Lee Road Project Study Area begins at Lee Road's intersection with Quincy Junction Road and extends eastward to the intersection of Mill Creek Road. The Lee Road Project Study Area and project segments are shown on Exhibit 1.

Along the Lee Road Study Area, pedestrians and bicyclists cannot safely share the roadway with motor vehicles due to high traffic volumes and existing speed limits. Pedestrians and Bicyclists may use paved shoulders where they exist.

### **Existing Pedestrian/Bicycle Facilities within the Lee Road Study Area**

Following in-the-field examination of existing pedestrian and bicycle facilities along the Lee Road study area, and after review of drawings depicting travelled lanes and shoulder width, staff has identified areas along the Lee Road study area that require safety improvements. These areas have been identified based on the lack of paved shoulders and how vehicles utilize parking along the roadway.

Within the Lee Road study area, 4' paved shoulders are present on both sides of Lee Road from the intersection of Quincy Junction Road east to the boundary of the Plumas County Fairgrounds. From that point eastward to the project terminus end at Mill Creek Road, less than 4' paved shoulders exist.

In addition to the lack of paved shoulder width through much of the study area, parking along Lee Road exacerbates the safety problem with vehicles parking right up to the fog line.

### **Long Term Project Goal**

As set forth in Plumas County's Active Transportation Program – Pedestrian/Bicycle Plan, the recommended improvement for Lee Road from the intersection of Quincy Junction Road to Mill Creek Road is to construct a Class II – On-street Bike Lane. The recommended width of the bicycle accessible shoulders is 4-5 feet.

Pedestrians are permitted to use bike lanes where there are no sidewalks.

### **Proposed Improvements to achieve project goal**

Infrastructure Improvements within the project area needed to achieve the project goal of providing a Class II On-Street Bike Lane include the following improvements:

1. Shoulder widening on selected segments:
  - a) Station 33+42 to 77+00 Left
  - b) Station 48+00 to 53+00 Right (Minor widening < 1 foot)
  - c) Station 53+00 to 70+25 Right
  - d) Station 70+25 to 71+34 Right
2. Bike Lane striping along entire length
3. Installation of “No Parking – Bike Lane” signage

Prioritization of improvements should focus along the frontage of the Plumas-Sierra County Fairgrounds and Sierra Pacific Industries (SPI) as this area is routinely congested with SPI employee parking and events at the Plumas-Sierra County Fairgrounds.

### **Environmental Compliance**

As all proposed improvements are located within existing rights-of-way, this project is Categorical Exempt from the California Environmental Quality Act (CEQA) under CEQA Guidelines Section 15304 (h).

### **Project Phasing and Cost Estimate**

Funding for completing the recommended improvements is constrained and as such, completion of the project will take place over a period of time and in phases. The project is anticipated to occur in three (3) phases:

#### **Phase I      Interim Safety Improvements**

Interim safety improvements are proposed that will immediately improve safety conditions for pedestrians and bicyclists.

Public Works staff with input from John Steffanic (Manager of the Plumas County Fairgrounds) and Chris Skinner (former Manager of the SPI Quincy Plant) have agreed to the following interim safety improvements that will set forth parking restrictions that maintain a minimum 4 foot shoulder width outside of the travelled lanes that can be used for pedestrians and bicycles.

Interim safety improvements consist of the installation of the following parking restrictive signage:

- i. Installation of “No Parking” signage along the south side of Lee Road from Fairgrounds Gate 2 to Fairgrounds Gate 3. This segment does not have enough shoulder width to support parking and maintain a minimum shoulder width of four (4) feet.
- ii. Installation of “No Parking within 4 feet of Fog Line” signage. This parking restriction is imposed along the frontage of the Plumas County Fairgrounds and the frontage of Sierra Pacific Industries where shoulder width is limited.
- iii. Additional parking restrictions establishing no parking zones and prohibition of parking within 4 feet of the fog line, are set forth in the attached draft ordinance (Exhibit A.)

#### **Phase II      Striping and Signage of Class II On-Street Bike Lane**

- i. Existing roadway shoulders of adequate width (4 feet) will be striped. Striping will provide a 6” wide striped fog line and a 6” wide line along the edge of pavement.
- ii. Installation of “No Parking, Bike Lane” Signage will be installed along identified Class II On-Street Bike Lanes.

#### **Phase III      Shoulder widening to construct four (4) foot minimum shoulders, including striping and Signage**

- i. Shoulder widening of the following segments:
  - a) Station 33+42 to 77+00 Left
  - b) Station 48+00 to 53+00 Right (Minor widening < 1 foot)
  - c) Station 53+00 to 70+25 Right
  - d) Station 70+25 to 71+34 Right

- ii. New shoulders will be striped and stenciled. Striping will provide a 6" wide striped fog line and a 6" wide line along the edge of pavement.
- iii. Installation of "No Parking, Bike Lane" Signage will be installed along identified Class II On-Street Bike Lanes.

### **Other Considerations**

- i. Some of the proposed improvements may require potential above ground utility relocation.
- ii. Minor drainage improvements may be required during the shoulder widening phase.
- iii. Additional pedestrian crosswalks may be necessary pending further analysis.

### **Funding**

Potential Funding Sources for this project are outlined below:

**RMRA** – Road Maintenance and Rehabilitation Account - Road Maintenance funding subject to approval by the Plumas County Board of Supervisors during annual budget hearings. Currently impacted by backlog of road maintenance and severe budget shortfalls due to reductions in State and Federal revenues to the County over the last decade. Next cycle of availability estimated to be in 2020.

**HSIP** - Highway Safety Improvement Program (Federal) competitive grants if project location has a documented accident history and the proposed improvements are approved countermeasures for reducing the types of accidents occurring. Funding is subject to availability and federal appropriations. Next application cycle is May of 2018 for construction funding by 2022.

**STIP** - State Transportation Improvement Program (Federal and/or State) funds to be requested through the Plumas County Transportation Commission subject to availability and the State Budget. Next funding cycle is fall of 2019 for engineering funding in FY 21/22 and construction funding by FY 24/25.

**ATP** = Active Transportation Program (ATP) encourages increased use of active modes of transportation. A highly competitive grant program. Funding is subject to availability and the State Budget. Next application cycle is May of 2018 for engineering funding in FY 19/20 and construction funding by FY 22/23.

### **External Agency Coordination**

The Department of Public Works will coordinate with the California Highway patrol during all phases of project design and construction.



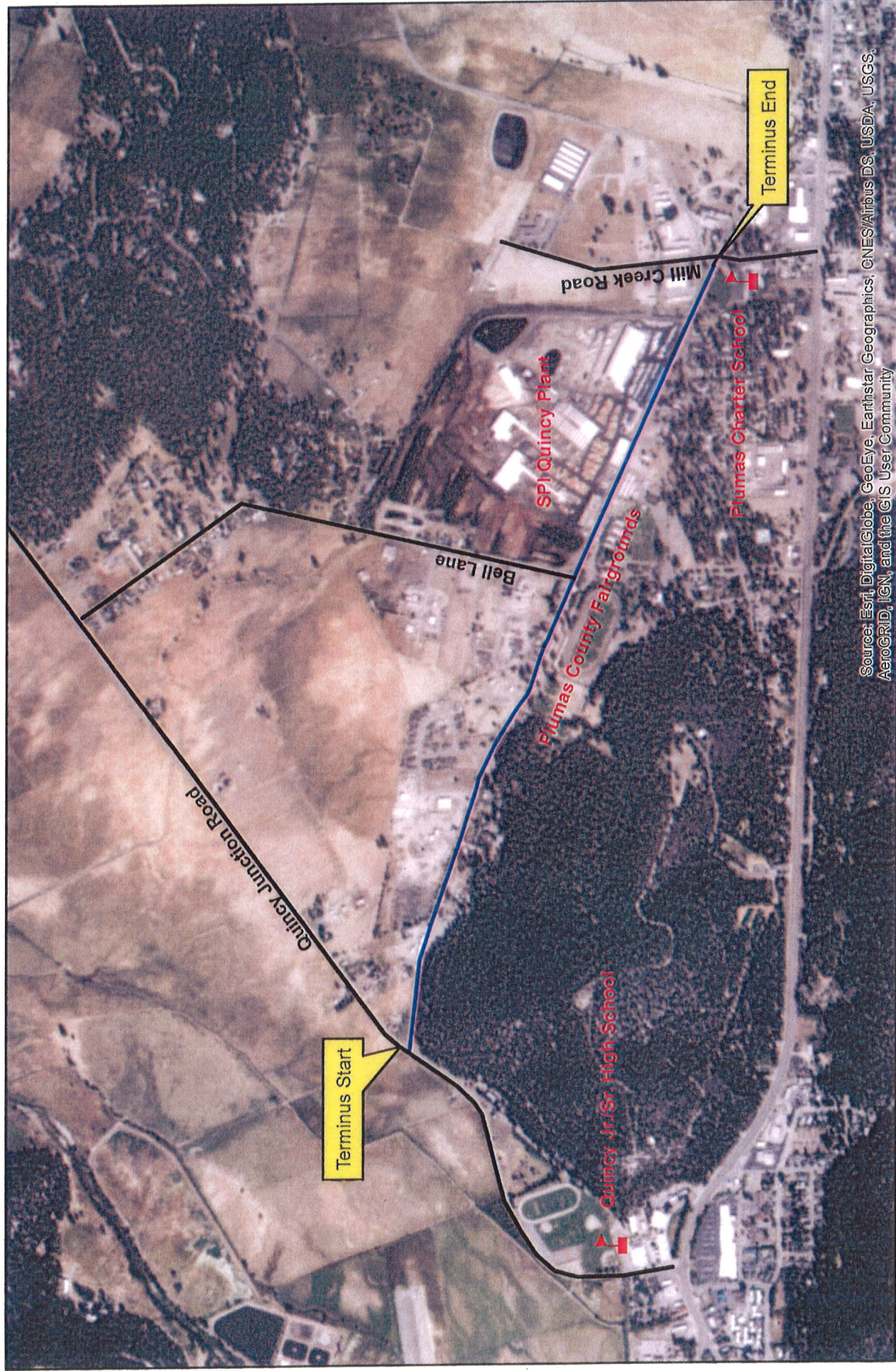
## Lee Road Safety Improvement Project

Project Phase	Description	Estimated Cost
<b>Phase I</b> Interim Safety Improvements	A. Installation of parking restrictive signage.	\$7,200
<b>Phase II</b> Striping and Signage of Class II On-Street Bike Lane	A. Striping and stenciling of existing paved shoulders	\$3,500
	B. Installation of parking restrictive signage.	\$5,000
<b>Phase III</b> Shoulder Widening, Striping and Signage  * See attached detailed cost estimate for additional information	A. Preliminary Design & Environmental Permits	\$15,000
	B. Final Design – Plans, Specifications & Estimate	\$10,000
	C. Right-of-Way Engineering	\$1,500
	D. Construction	\$215,590
	E. Supplemental Work	\$5,000
	F. Construction Engineering	\$27,649
	G. Contingencies	\$22,059
<b>TOTAL PROJECT COST.....</b>		<b>\$312,498</b>

PLUMAS COUNTY DEPARTMENT OF PUBLIC WORKS							2/1/2018
PRELIMINARY ENGINEER'S ESTIMATE							AMH
PROJECT: Lee Road Safety Improvement Project (Phase 3)							
Project Study Report - Construct Class II Bike Lanes, Signing and Striping C.R. 405 between Quincy Junction Rd and Mill Creek Rd							
ITEM NO.	ITEM CODE	DESCRIPTION	UNITS	QUANTITY	UNIT PRICE	TOTAL	
<b>A. ENVIRONMENTAL DOCUMENT &amp; PERMITS</b>							
1		PRELIMINARY DESIGN	L.S.	L.S.	\$ 10,000.00	\$ 10,000.00	
2		ENVIRONMENTAL DOCUMENT & PERMITS	L.S.	L.S.	\$ 5,000.00	\$ 5,000.00	
<b>E &amp; P TOTAL:</b>						<b>\$ 15,000.00</b>	
<b>B. PRELIMINARY ENGINEERING</b>							
1		FINAL DESIGN - Plans, Specifications & Estimate	L.S.	L.S.	\$ 10,000.00	\$ 10,000.00	
<b>P.E. TOTAL:</b>						<b>\$ 10,000.00</b>	
<b>C. RIGHT-OF-WAY</b>							
1		RIGHT-OF-WAY ENGINEERING	L.S.	L.S.	\$ 1,500.00	\$ 1,500.00	
<b>R/W TOTAL:</b>						<b>\$ 1,500.00</b>	
<b>D. CONSTRUCTION</b>							
1	120090	CONSTRUCTION AREA SIGNS	L.S.	1	\$ 2,500.00	\$ 2,500.00	
2	120100	TRAFFIC CONTROL SYSTEM	L.S.	1	\$ 25,000.00	\$ 25,000.00	
3	130100	JOB SITE MANAGEMENT	L.S.	1	\$ 1,500.00	\$ 1,500.00	
4	130200	PREPARE WATER POLLUTION CONTROL PROGRAM	L.S.	1	\$ 1,500.00	\$ 1,500.00	
5	130310	RAIN EVENT ACTION PLAN	EA	1	\$ 500.00	\$ 500.00	
6	130640	TEMPORARY FIBER ROLLS	LF	100	\$ 4.00	\$ 400.00	
7	150857	REMOVE ASPHALT CONCRETE SURFACING	SQFT	500	\$ 15.00	\$ 7,500.00	
8	152390	RELOCATE ROADSIDE SIGN	EA	20	\$ 150.00	\$ 3,000.00	
9	153103	COLD PLANE ASPHALT CONCRETE	SQYD	320	\$ 30.00	\$ 9,600.00	
10	190185	SHOULDER BACKING	TONS	370	\$ 45.00	\$ 16,650.00	
11	260203	CLASS 2 AGGREGATE BASE	CY	650	\$ 50.00	\$ 32,500.00	
12	390132	HOT MIX ASPHALT (TYPE A)	TON	640	\$ 150.00	\$ 96,000.00	
13	390136	MINOR HOT MIX ASPHALT	TON	25	\$ 200.00	\$ 5,000.00	
14	566011	ROAD SIGN - 1 POST	EA	20	\$ 250.00	\$ 5,000.00	
15	840656	PAINT TRAFFIC STRIPE (2-COAT)	LF	6700	\$ 1.00	\$ 6,700.00	
16	840666	PAINT PAVEMENT MARKING STRIPE (2-COAT)	SF	320	\$ 7.00	\$ 2,240.00	
<b>CONSTRUCTION CONTRACT ITEMS:</b>						<b>\$ 215,590.00</b>	
<b>E. SUPPLEMENTAL WORK:</b>							
1		ADDITIONAL TRAFFIC CONTROL	L.S.	1	\$ 5,000.00	\$ 5,000.00	
<b>SUPPLEMENTAL WORK TOTAL:</b>						<b>\$ 5,000.00</b>	
<b>SUBTOTAL:</b>						<b>\$ 220,590.00</b>	
<b>CONTINGENCIES: (10%)</b>						<b>\$22,059.00</b>	
<b>CONSTRUCTION TOTAL:</b>						<b>\$242,649.00</b>	
<b>F. CONSTRUCTION ENGINEERING</b>							
1		RESIDENT ENGINEER	L.S.	1	\$ 20,000.00	\$ 20,000.00	
2		MATERIALS TESTING & CERTIFICATIONS	L.S.	1	\$ 7,500.00	\$ 7,500.00	
<b>C.E. TOTAL:</b>						<b>\$ 27,500.00</b>	
<b>PROJECT GRAND TOTAL:</b>						<b>\$ 296,649</b>	
<b>PE</b>						<b>\$ 25,000</b>	
<b>ROW</b>						<b>\$ 1,500</b>	
<b>CONST</b>						<b>\$ 242,649</b>	
<b>CE</b>						<b>\$ 27,500</b>	



# Lee Road Project Study Area



**Exhibit 1**

Lee Road Project Study Area



2,000 1,000 0 2,000 Feet





1 inch = 200 feet  
J.G. - 6/6/2017



**Area Designated for No Parking**



No parking is permitted within 4 feet of Edge Line (Fog Line) along entire length of Lee Road within the Study Area





1 inch = 200 feet

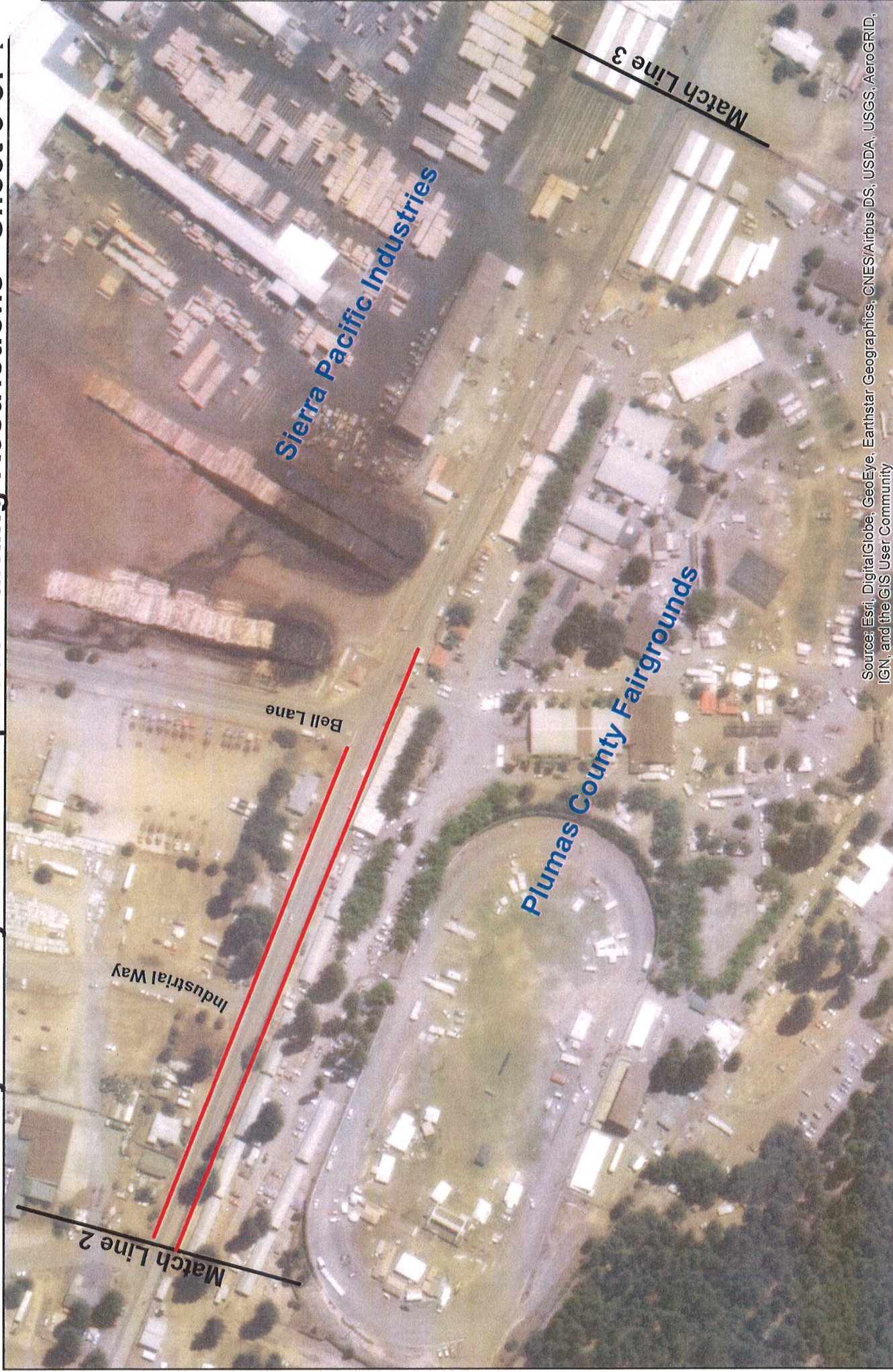
J.G. 6/6/2017



### Area Designated for No Parking

No parking is permitted within 4 feet of Edge Line (Fog Line) along entire length of Lee Road within the Study Area





Source: Esri, DigitalGlobe, GeoEye, Earthstar Geographics, CNES/Airbus DS, USDA, USGS, AeroGRID, IGN, and the GIS User Community



**Area Designated for No Parking**

No parking is permitted within 4 feet of Edge Line (Fog Line) along entire length of Lee Road within the Study Area





Source: Esri, DigitalGlobe, GeoEye, Earthstar Geographics, CNES/Airbus DS, USDA, USGS, AeroGRID, IGN, and the GIS User Community

1 inch = 200 feet  
J.G. 6/6/2017



**Area Designated for No Parking**

No parking is permitted within 4 feet of Edge Line (Fog Line) along entire length of Lee Road within the Study Area



**ORDINANCE NO. 18 – \_\_\_\_\_**

**AN ORDINANCE OF THE COUNTY OF PLUMAS, STATE OF CALIFORNIA,  
AMENDING SECTIONS OF CHAPTER 3 OF TITLE 4 OF THE PLUMAS COUNTY  
CODE CONCERNING PARKING ON LEE ROAD.**

The Board of Supervisors of the County of Plumas, State of California, **DOES ORDAIN** as follows:

**Section 1.** Add Section 4-3.506. (w) to Article 5 of Chapter 3 of Title 4 of the Plumas County Code.

**CHAPTER 3. TRAFFIC  
Article 5. Parking**

**Sec. 4-3.506 (w) Lee Road**

- (1) It shall be unlawful for any person to park any vehicle at any time at the following locations on Lee Road:
  - (i) On the north side of Lee Road from the intersection of Quincy Junction Road to Bell Lane.
  - (ii) On the north side of Lee Road from the intersection of Mill Creek to the intersection of North Mill Creek Road.
  - (iii) On the south side of Lee Road from the intersection of Quincy Junction Road to Gate #2 of the Plumas County Fairgrounds.
  - (iv) On the south side of Lee Road from easterly boundary of the Plumas County Fairgrounds to the intersection of North Mill Creek Road
- (2) It shall be unlawful for any person to park any vehicle within four (4) feet of the Edge Line (Fog Line) from the intersection of Quincy Junction Road to the Intersection of North Mill Creek Road.

**Section 2.** Section 1 of this ordinance, which amends the Plumas County Code, shall be codified. The remainder of the ordinance shall not be codified.

**Section 3.** The County finds that this ordinance is not subject to the California Environmental Quality Act (CEQA) pursuant to Sections 15060(c)(2) (the activity will not result in a direct or reasonably foreseeable indirect physical change in the environment) and 15061(b)(3) (there is no possibility the activity in question may have a significant effect on the environment).

**Section 4.** This ordinance shall be published, pursuant to Section 25124 (a) of the Government Code of the State of California, before the expiration of fifteen days after the passage of the ordinance, once, with the names of the supervisors voting for and against the ordinance, in the Feather River Bulletin, a newspaper of general circulation in the County of Plumas.



**Section 5.** This ordinance shall become effective thirty (30) days after its date of final adoption.

The foregoing ordinance was introduced at a regular meeting of the Board of Supervisors on the 13th day of March, 2018, and passed and adopted by the Board of Supervisors of the County of Plumas, State of California, on the 20th day of March 2018, by the following vote:

AYES: Supervisors:

NOES: Supervisors:

ABSENT: Supervisors:

---

Chair, Board of Supervisors

ATTEST:

---

Clerk of said Board of Supervisors

## Section. 4-3.506. - Parking in Quincy, California.

### (Excerpt of Section 3 of Title 4 of the Plumas County Code)

#### Red line copy showing new text

*Sections 4-3.506 (a) through 4-3.506 (t) remain unchanged*

The following parking regulations shall apply in Quincy, California:

(u) *Buchanan Street.*

(1) In the four (4) diagonal parking spaces on the east side of Buchanan, just southerly of the intersection with Main Street, the parking of any oversized vehicle, as defined by [Section 4-3.506\(t\)](#) of the Plumas County Code, shall be prohibited between the hours of 8:00 a.m. to 5:00 p.m., Monday through Friday.

(v) Bucks Lake Road

(1) It shall be unlawful for any person to park any vehicle at any time at the following locations on Bucks Lake Road:

- (i) On the north side of Bucks Lake Road from a point 250 feet west of the intersection of Meadow Way to the intersection of Bellamy Lane.
- (ii) On the south side of Bucks Lake Road from a point 250 feet west of the intersection of Meadow Way to the intersection of Bellamy Lane.

(w) Lee Road

(2) It shall be unlawful for any person to park any vehicle at any time at the following locations on Lee Road:

- (iii) On the north side of Lee Road from the intersection of Quincy Junction Road to Bell Lane.
- (iv) On the north side of Lee Road from the intersection of Mill Creek to the intersection of North Mill Creek Road.
- (v) On the south side of Lee Road from the intersection of Quincy Junction Road to Gate #2 of the Plumas County Fairgrounds.
- (vi) On the south side of Lee Road from easterly boundary of the Plumas County Fairgrounds to the intersection of North Mill Creek Road

(3) It shall be unlawful for any person to park any vehicle within four (4) feet of the Edge Line (Fog Line) from the intersection of Quincy Junction Road to the Intersection of North Mill Creek Road.

## **Section. 4-3.506. - Parking in Quincy, California.**

### **(Excerpt of Section 3 of Title 4 of the Plumas County Code)**

#### **Clean copy of final text**

*Sections 4-3.506 (a) through 4-3.506 (t) remain unchanged*

**(u) Buchanan Street.**

(1) In the four (4) diagonal parking spaces on the east side of Buchanan, just southerly of the intersection with Main Street, the parking of any oversized vehicle, as defined by Section 4-3.506(t) of the Plumas County Code, shall be prohibited between the hours of 8:00 a.m. to 5:00 p.m., Monday through Friday.

**(v) Bucks Lake Road**

(1) It shall be unlawful for any person to park any vehicle at any time at the following locations on Bucks Lake Road:

- (i) On the north side of Bucks Lake Road from a point 250 feet west of the intersection of Meadow Way to the intersection of Bellamy Lane.
- (ii) On the south side of Bucks Lake Road from a point 250 feet west of the intersection of Meadow Way to the intersection of Bellamy Lane.

**(w) Lee Road**

(2) It shall be unlawful for any person to park any vehicle at any time at the following locations on Lee Road:

- (iii) On the north side of Lee Road from the intersection of Quincy Junction Road to Bell Lane.
- (iv) On the north side of Lee Road from the intersection of Mill Creek to the intersection of North Mill Creek Road.
- (v) On the south side of Lee Road from the intersection of Quincy Junction Road to Gate #2 of the Plumas County Fairgrounds.
- (vi) On the south side of Lee Road from easterly boundary of the Plumas County Fairgrounds to the intersection of North Mill Creek Road

(3) It shall be unlawful for any person to park any vehicle within four (4) feet of the Edge Line (Fog Line) from the intersection of Quincy Junction Road to the Intersection of North Mill Creek Road.

## NOTICE OF EXEMPTION

**To:** [X] Office of Planning & Research  
P.O. Box 3044, Room 113  
Sacramento, CA 95812-3044

**From:** Plumas County Public Works Department  
1834 East Main Street  
Quincy, CA 95971

[X] Plumas County Clerk  
520 Main Street, Room 102  
Quincy, CA 95971

**Project Title:** Parking Restrictions along Lee Road to improve pedestrian and bicycle safety.

**Project Applicant:** Plumas County Public Works Department

**Project Location:** Lee Road between Quincy Junction Road and Mill Creek Road, Quincy CA

**Description of Nature, Purpose or Beneficiaries of Project:** Ordinance amending Plumas County Code imposing new parking restrictions along Lee Road between Quincy Junction Road and Mill Creek Road in Quincy.

**Name of Public Agency Approving Project:** Plumas County Public Works

**Name of Person Carrying Out Project:** Bob Perreault, Public Works Director

**Exempt Status:** (Check one)

[ ] Ministerial (Sec. 21080(b)(1); 15268);

[ ] Declared Emergency (Sec. 21080(b)(3); 15269(a));

[ ] Emergency Project (Sec. 15269(d));

[ ] Categorical Exemption. State type and section number: Class 1 – CEQA Guidelines Section 15301

[X] Statutory Exemptions. State code number: 15061(b)(3)

**Reason why project is exempt:** It can found with certainty that this project will have no significant effects on the environment, therefore, this project is not subject to CEQA under Section 15061(b)(3) of the Plumas County Environmental Review Guidelines.

### Lead Agency

**Contact Person:** Randy Wilson, Planning Director    **Area Code/Phone/Ext:** (530) 283-7011

Signature: Bob K. H.

Signed by Lead Agency

Date: 2/26/17

Title: Senior Planner

### Certificate of Posting

I hereby certify that from \_\_\_\_\_ to \_\_\_\_\_ I posted a copy of this Notice of Exemption in the office of the Plumas County Clerk (30 days).

By \_\_\_\_\_

on \_\_\_\_\_

Kathleen Williams, County Clerk /Deputy



## OFFICE OF THE DISTRICT ATTORNEY

David Hollister, District Attorney  
520 Main Street, Room 404 · Quincy, California 95971  
(530) 283-6303 · Fax (530) 283-6340

**Date:** February 28, 2018  
**To:** The Honorable Board of Supervisors  
**From:** David Hollister, District Attorney  
**Subject:** AGENDA ITEM FOR BOARD OF SUPERVISORS MEETING OF  
MARCH 13, 2018.  
RE: AUTHORIZATION TO HIRE ALLOCATED LEGAL SERVICES  
ASSISTANT AT A C STEP.

### **Recommendation:**

Authorize the District Attorney to hire above "B" step for the position of Legal Services Assistant I/II.

### **Background and Discussion**

On September 5<sup>th</sup>, of last year the Board approved a request to recruit and fill a vacant 1.0 FTE Legal Services Assistant. We have been functioning without a Legal Services Assistant since August 18, 2017 when the employee in this position resigned and accepted a higher paying position at Social Services.

After an ongoing recruitment for the Legal Services Assistant position an offer of employment has been made to an extremely well-qualified candidate. The candidate has accepted the offer, contingent upon Board approval of this request.

No additional county funds are required for this request since the former position was funded at a higher step for FY 17/18 and has been vacant for seven months.

Please approve the hiring of a Legal Services Assistant I/II at the C step.





3C

## Plumas County Public Health Agency

Andrew Woodruff, MPH, Acting Director • Mark Satterfield, M.D, Health Officer  
270 County Hospital Road, Suite 206, Quincy, CA 95971 • (530) 283-6337 • Fax (530) 283-6425

---

**Date:** February 27, 2018  
**To:** Honorable Board of Supervisors  
**From:** Andrew Woodruff  
**Item:** Non-Consent for March 13, 2018

**Recommendation:** It is recommended that the Board of Supervisors approve a General Fund Contingency Transfer of \$10,000.00 to Budget Unit 20480 (Senior Transportation) to cover the retirement payout of an employee.

**Background Information:** As the Board is aware Plumas County Public Health Agency is responsible for providing senior transportation services to and from the Senior Nutrition sites, deliver meals to seniors who are homebound and provide nutritious meals at four sites. These programs provide nutritious meals at congregate meal sites throughout the County. In addition to the transportation to and from the four meal sites, services include transportation to medical and other appointments both in and out of Plumas County.

Due to the retirement of our longtime Portola Site Manager whose payout was close to \$10,000, we are asking for an additional \$10,000 from the General Fund.

This Budget transfer is essential for continued program activities. If funds are not available, with the Board's direction, Senior Transportation will need to cut back rides substantially through the end of the fiscal year. The attached Budget Transfer has been approved and signed by the Auditor.

Please contact me should you have any questions or need additional information.

Thank you.

COUNTY OF PLUMAS  
REQUEST FOR BUDGET APPROPRIATION TRANSFER  
OR SUPPLEMENTAL BUDGET

TRANSFER NUMBER

(Auditor's Use Only)

Department: Public Health

Dept. No. 20480 Senior Trans

Date 1/24/2018

The Reason for this request is (check one):

- A. ☐ Transfer to/from Contingencies OR between Departments  
B. ☒ Supplemental Budgets (including budget reductions)  
C. ☐ Transfers to/from or new Fixed Asset, out of a 51XXX  
D. ☐ Transfer within Department, except fixed assets  
E. ☐ Establish any new account except fixed assets

Approval Required

Board  
Board  
Board  
Auditor  
Auditor

☐ TRANSFER FROM OR

☒ SUPPLEMENTAL REVENUE ACCOUNTS

CHECK "TRANSFER FROM" IF TRANSFER WITHIN EXISTING BUDGET, CHECK "SUPPLEMENTAL REVENUE" IF SUPPLEMENTAL, NEW UNBUDGETED REVENUE)

FUND #	DEPT #	ACCT #	NAME OF BUDGET ITEM	\$ AMOUNT
0116	20480	46211	General Fund	\$ 10,000.00
Total (must equal transfer total)				\$ 10,000.00

☐ TRANSFER TO OR

☒ SUPPLEMENTAL EXPENDITURE ACCOUNTS

CHECK "TRANSFER FROM" IF TRANSFER WITHIN EXISTING BUDGET, CHECK "SUPPLEMENTAL REVENUE" IF SUPPLEMENTAL, NEW UNBUDGETED REVENUE)

FUND #	DEPT #	ACCT #	NAME OF BUDGET ITEM	\$ AMOUNT
0116	20480	51020	Other Wages	\$ 10,000.00
Total (must equal transfer total)				\$ 10,000.00

Supplemental budget requests require Auditor/Controller's signature

Please provide copy of grant award, terms of award, proof of receipt of additional revenue, and/or backup to support this request.

RECEIVED

JAN 24 2018





301

## DEPARTMENT OF FACILITY SERVICES & AIRPORTS

198 ANDY'S WAY, QUINCY, CALIFORNIA 95971-9645

(530) 283-6299 FAX: (530) 283-6103

Dony Sawchuk  
Director

Board Date: March 13, 2018

To: The Honorable Board of Supervisors

From: Lindsay Driscoll, Department Fiscal Officer II

Subject: **Approve Budget Transfer of \$14,365.56 within department 20120 to balance accounts for Fiscal Year 2016/2017.**

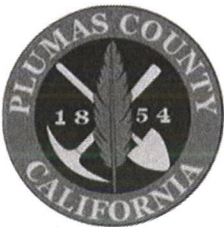
---

### Background

This budget transfer will zero out accounts that went over budget with accounts that were under budget for last fiscal year. This does not change the overall budget of Facility Services.

### Recommendation

Approve Budget Transfer of \$14,365.56 within department 20120 to balance accounts for Fiscal Year 2016/2017.



## DEPARTMENT OF FACILITY SERVICES & AIRPORTS

198 ANDY'S WAY, QUINCY, CALIFORNIA 95971-9645

(530) 283-6299 FAX: (530) 283-6103

302

Dony Sawchuk  
Director

Board Date: March 13, 2018

To: The Honorable Board of Supervisors

From: Lindsay Driscoll, Department Fiscal Officer II

Subject: **Approve Supplemental Budget Transfer of \$9,140.00 to pay for plans at Sierra House to be reimbursed by Behavioral Health.**

---

### Background

Behavioral Health has been working closely with Facility Services with a remodel project at Sierra House. Part of this included the drawing of plans by Ken Roper. Because the contract was between Facility Services and the vendor, the Auditor needs to have the claim paid out of Facility Services with Behavioral Health reimbursing our department through a transfer account. This supplemental budget transfer will account for the transfer from Behavioral Health to Facility Services and will allow our department to pay for this out of our budget.

### Recommendation

Approve Supplemental Budget Transfer of \$9,140.00 to pay for plans at Sierra House to be reimbursed by Behavioral Health.

4A

**PLUMAS COUNTY  
PUBLIC DEFENDER CONTRACT**  
For Attorney's Services Rendered  
Under Court Appointment

WHEREAS, CRAIG OSBORNE (hereafter "Attorney") and Plumas County (hereafter "County") seek to enter this contract; and,

WHEREAS, on March \_\_\_\_, 2018, the Plumas County Board of Supervisors considered and approved the terms and conditions that follow,

NOW, THEREFORE, IT IS AGREED AS FOLLOWS:

1. **Qualifications:** Attorney is qualified to practice law in California and to perform this contract. Nothing in this contract shall be construed to modify the Attorney's obligation to obey the Rules of Professional Conduct of the State Bar of California. County is authorized to enter this contract under Penal Code §987.2(b).

2. **Term of Contract:** This contract shall commence with an effective date of March 2, 2018, and end on May 31, 2021, unless terminated earlier in accordance with Paragraph 13, below. County's Board of Supervisors hereby ratifies, and approves for payment, services provided by Attorney from March 2, 2018, to date of approval of this Agreement by the Board of Supervisors.

3. **Attorney's Services:** Attorney's services shall be limited annually to approximately one-third ( $1/3^{\text{rd}}$ ) of the total appointments made by the County's courts and, more specifically, to one-third ( $1/3^{\text{rd}}$ ) of each type of case as described more fully in Paragraph 4, below. The Attorney acknowledges that one-third ( $1/3^{\text{rd}}$ ) is an approximation, and agrees not to refuse appointments on the ground of disproportionality, prior to conferring in good faith with the County Counsel or Superior Court Judges. Such one-third ( $1/3^{\text{rd}}$ ) is subject to possible adjustment to one-quarter ( $1/4^{\text{th}}$ ) as provided in Paragraph 14, below.

Attorney shall accept all assignments by the Court, where no conflict exists, for those matters enumerated in Government Code Section 27706 or as required by the laws of the United States and the State of California, except that Attorney is not obligated to represent defendants as excluded below:

(1) conservatorship cases; (2) state appellate court cases after filing of the notice of appeal and motion to appoint counsel per Penal Code Section 1240.1 [both misdemeanor and felony appeals are excluded]; (3) Family Support OSC Re: Contempt cases; (4) cases in which a violation of Penal Code Section 187 is charged; (5) Welfare and Institutions Code Section 300 cases; and (6) court scheduled probation status reviews and no more than two (2) pro per habeas corpus petitions per fiscal year.

Attorney will maintain an office and a physical presence in Quincy, the Plumas County seat, in order to facilitate accessibility to clients and for the convenience and efficiency of the courts.

**4. Appointment Process:** In order to ensure that the Attorney receives the correct one-third ( $1/3^{\text{rd}}$ ) proportion of cases annually, and to provide for alternative arrangements when the Attorney is unavailable, the following process shall be used:

(a) Monthly Reports on Appointments: By the fifteenth ( $15^{\text{th}}$ ) day of each month (e.g., January 15, February 15, etc.), the Attorney shall make a written report to the County Counsel identifying each court appointment for the prior month. Each appointment shall be categorized under one of four separate categories as follows: Felonies, Misdemeanors, Juvenile, Other. For each appointment there shall be stated the date of appointment, the case number, court, and the code section describing the charge or proceeding. Failure to submit complete timely reports shall be good cause for contract termination by the County.

(b) Monthly Report Summaries: County Counsel shall summarize the Attorney's monthly reports showing the total number of appointments in each of the four categories, and that number as a percentage of all appointments made to County's contract public defenders. This summary shall be forwarded promptly to the County's judges.

(c) Attorney Availability: The scheduling of court appointments shall be arranged between the Attorney and the Superior Court Judges according to the following criteria:

(1) The Attorney shall be available to receive court appointments. Recognizing that vacations, illness, or private law practice may cause unavailability from time to time, Attorney shall provide adequate prior notification of the Attorney's unavailability to the court, to the extent possible. Attorney shall arrange for a substitute attorney acceptable to the court to handle Attorney's calendar during the period of Attorney's unavailability. If a substitute for Attorney has been approved in advance by the court, then the substitute may be appointed in lieu of the Attorney, and this shall not be deemed a prohibited assignment of the contract. Attorney shall be responsible for any fees and expenses incurred by such substitute attorney, and Attorney is encouraged to negotiate in advance with such substitute attorney regarding these fees and expenses. Should Attorney not arrange for a substitute attorney during a period of unavailability, Attorney shall still be responsible for any fees and expenses incurred by an attorney or attorneys appointed by the court in Attorney's place.

(2) The Attorney shall coordinate with the County's other contract public defenders to ensure that at least one is present in court on law and motion

days. If coordination cannot be arranged by and between the attorneys, the judge shall have the right under this contract to demand that the Attorney be present for a particular law and motion day.

(d) Court Use of Monthly Reports: In appointing defense counsel under this contract, the County's judges will use the County Counsel's monthly report summaries to permit each contract public defender the opportunity to attain his or her target percentage of service; provided, however, that the judges may also consider a variety of other factors such as: conflicts of interest; past representation of the same client; and the availability of other contract public defenders.

(e) Default: In the event that the Attorney declines appointment or is unavailable for appointment without justification under this contract, then the court shall notify County Counsel of the Attorney's default in performance. The County may declare the default to be a material breach of this contract, and good cause for contract termination. If the Attorney is unavailable for, or disqualified from, appointment due only to the Attorney's fault, or carelessness, then the County may deduct from the compensation due under this contract the amount of \$500 per felony or \$250 per misdemeanor, and the Attorney shall be offered the opportunity for a hearing before the Board of Supervisors before any deduction occurs.

**5. Cases Pending on Commencement of Contract:** Subject to appointment by the Court in such case, Attorney agrees to take over the public defender caseload to which attorney Douglas Prouty was appointed by the County's Courts prior to the effective date of this contract.

**6. Compensation:** Subject to possible adjustment as provided in Paragraph 14, below, the Attorney shall be compensated monthly on the first day of each month following the month when services are rendered, based on a rate of \$8,256.14 per month as the total compensation due Attorney under the contract. Except as set forth below, this monthly compensation is the total compensation due Attorney under the contract.

(a) Long Trials: For any trial exceeding five days, the Attorney shall be paid at the rate of \$57.50 per hour for all work after the fifth day.

(b) Complex Pretrial Preparation: For cases involving extraordinarily complex pretrial preparation, in excess of 20 hours, the Attorney may be entitled to additional compensation at the rate of \$57.50 per hour upon approval by the court. The Attorney shall be responsible for making and preserving records justifying the amount of additional compensation.

(c) Cases Transferred to Plumas County: The Attorney shall not be required to accept appointment to cases which have been transferred by another

jurisdiction for trial in Plumas County, but the Attorney may accept such cases and be paid by the transferring court by agreement pursuant to Penal Code §987.2.

7. **Copy Machines:** Use shall be permitted of County copy machines only for work performed under this contract, but the Attorney shall reimburse the County at the rate generally charged to county departments.

8. **Expenses of County:** The County shall pay for all services of a court reporter when such services are required by law. Subject to court approval, the County shall also pay all witness fees, including expert witnesses, laboratory services and forensic services. The costs of investigative personnel in non-routine cases, where there is prior court authorization, shall be paid by the County Appointment of counsel other than the Attorney shall be an expense of the County when:

(a) The court finds that a case is so complex that it requires legal specialization the Attorney does not possess.

(b) The court finds a conflict of interest in appointing the Attorney.

(c) The court transfers venue outside of the County.

(d) The court substitutes another attorney to resolve a scheduling conflict in or between the courts.

9. **Private Practice:** The Attorney shall be permitted to engage in private practice to the extent that there is not substantial interference with performance of this contract. The Attorney shall be prohibited from privately representing any person who has previously appeared unrepresented in court on the same matter, who requested a court-appointed attorney and the Attorney declined to be appointed to the case.

When scheduling appearances in other counties, or for private cases in Plumas County, the Attorney shall give priority to appearances required under this contract. Failure to give priority shall constitute good cause for the County's termination of this contract.

10. **Client Reimbursement of County:** In relation to proceedings by the courts to obligate clients of court-appointed attorneys to reimburse some or all of the County's costs for provision of legal service, the Attorney shall:

(a) Notify the court if the Attorney has knowledge that a client has made materially inaccurate disclosures of the client's financial condition; and,

(b) Notify the court in timely fashion of the time and value of services furnished by the Attorney to the client; and,

(c) Cooperate with the Tax Collector's Office, generally, and also inform clients of their obligation to comply with their court-ordered reimbursement of the County, including compliance with the procedures of the Tax Collector's Office, especially as regards financial disclosure and collection arrangements; and,

(d) Advise the Court about how to raise the level of client reimbursements for public defender services.

11. **Independent Contractor:** The Attorney's relationship to the County is one of independent contractor and not employment.

12. **Insurance:** The Attorney shall be responsible at all times, during the term of this contract, for having professional malpractice insurance in an amount of at least \$100,000 per claim and \$300,000 for all claims made on an annual basis. If County requires higher coverage, County shall reimburse the Attorney for the additional cost. If legal developments in California reduce immunity from malpractice, and malpractice insurance costs for criminal work increase substantially, the Attorney may notify the CAO to open the contract to discuss an increase in compensation only to cover those cost increases.

13. **Termination of Contract:** Upon termination of this contract, the Attorney shall request the court to be relieved of pending cases except those set for trial. If the court denies a request, the Attorney shall be entitled to reasonable compensation for his or her services. In that case, as determined by the court.

Either party may terminate this contract before its stated expiration after first serving on the other party notice of intent to terminate, at least sixty days prior to the date the termination will take effect; provided, that the County shall terminate only for good cause and shall offer an opportunity for a hearing on that issue before the Board of Supervisors or a Board-assigned hearing officer whose determination shall be final.

14. **Adjustment of Caseloads:** Notwithstanding Paragraphs 3, 4, and 6, County shall have the option to contract with up to one additional attorney to accept one-quarter (1/4<sup>th</sup>) of the total appointments made by the County's Courts on terms substantially similar to the terms of this agreement. County's exercise of the option provided by this paragraph shall be made in good faith in order to reduce the number of conflict cases paid outside public defender contracts such as this, or to increase capacity to handle multi-party cases, or other good reason. Upon the exercise of this option, Attorney's caseload will decrease to one-quarter (1/4<sup>th</sup>) and the monthly payment to \$6,556.14.

15. **Signature:**

Signatures on the following page.



**ATTORNEY**

\_\_\_\_\_  
Craig Osborne, Esq.

Dated: \_\_\_\_\_

**COUNTY OF PLUMAS**

\_\_\_\_\_  
Jeff Engel, Chair  
Board of Supervisors

Dated: \_\_\_\_\_

APPROVED AS TO FORM:

\_\_\_\_\_  
R. Craig Settlemire  
County Counsel

[c:\users\csettlem\appdata\local\microsoft\windows\temporary internet files\content.outlook\7kr9cuda\public  
defender contract 2018 - osborne (3).doc]