

October 14, 2014

The Honorable Judge Kaufman and 2013-2014 Plumas County Civil Grand Jury Chairman,

The Plumas County Board of Supervisors and Plumas County Departments Heads respond to the 2013-2014 Plumas County Civil Grand Jury Final Report findings and recommendations per Cal Pen Code § 933.05 (2010)§ 933.05.

We thank you for your work this past year.

Sincerely,

Jon Kennedy, Chairman

Plumas County Board of Supervisors

**Plumas County Alcohol and Other Drug Services – On the Road to Recovery**

**Findings:**

**F1 The Alcohol and Other Drug Services Department has a lack of sufficient personnel resources to effectively handle case load and public outreach.**

*The Plumas County Board of Supervisors agreed with this finding.*

**F2 While the Alcohol and Other Drug Services Department has a good working relationship with the Office of Probation; there is insufficient coordination and communication between AOD and other governing agencies.**

*The Plumas County Board of Supervisors agreed with this finding. In February 2014, a permanent Director was hired and there has been considerable improvement in coordination and communication with other governing agencies since .*

**F3 Competitive turf wars among agencies that serve individuals with alcohol and drug issues have created obstacles to creating an integrated behavioral health services model therefore inhibiting their ability to serve these clients.**

*The Plumas County Board of Supervisors agreed with this finding.*

**F4 It is dangerous, and potentially life threatening, to have Correctional Officers overseeing individuals withdrawing from alcohol and other drugs at the County Jail rather than in a medical detoxification facility.**

*The Plumas County Board of Supervisors agreed with this finding.*

**F5 The Grand Jury finds that the Alcohol and Other Drug Services Department closure for three years and fluctuating Directors (3 in three years) has made it difficult to maintain consistent treatment services and thus resulted in a negative public image.**

*The Plumas County Board of Supervisors agreed with this finding.*

## **RECOMMENDATIONS**

**R1 The Grand Jury recommends that the Alcohol and Other Drug Services Department hire one more Substance Abuse Counselor and a Case Manager. The money could come from Federal Grants assisting rural counties in substance abuse treatment programs.**

*The Plumas County Board of Supervisors agreed with this recommendation.*

**R2 The Grand Jury recommends that AOD be integrated into a Behavioral Health Services Model.**

*The Plumas County Board of Supervisors agreed with this recommendation and will be working toward achieving that model by contacting other counties and experts with knowledge on Behavioral Health Services Model.*

**R3 The Grand Jury recommends that program Directors meet monthly with the AOD Director to come up with a unified vision and strategize how to improve communication and coordination of entities serving the alcohol and other substance abuse population. The monthly meetings would include a designated point person from the Board of Supervisors, Plumas District Hospital, The Sheriff's Office, the Alternative Sentencing Program, and the Office of Probation.**

*The Plumas County Board of Supervisors agreed with this recommendation and some groups have been formed and meetings have begun to taken place.*

**R4 The Grand Jury recommends that AOD and Plumas District Hospital administrators get together and come up with a plan to transport intoxicated individuals who are willing to go to a medical detoxification facility rather than the County Jail.**

*The Plumas County Board of Supervisors agreed with this recommendation.*

**R5 The Grand Jury recommends that AOD immediately launch a public relations campaign to repair its public image and increase its profile.**

*The Plumas County Board of Supervisors agreed with this recommendation.*

**R6 The Grand Jury recommends that at least one person be delegated from the Board of Supervisors to assist the new Director in revamping AOD.**

*The Plumas County Board of Supervisors agreed with this recommendation and have already assigned two board members to work with the Director.*



## **ALCOHOL AND OTHER DRUG SERVICES**

---

270 County Hospital Road, Suite 111, Quincy, CA 95971

Treatment (530) 283-7050    Prevention (530) 283-6118

<http://www.plumascounty.us/index.aspx?nid=2349>

**Date:** September 2, 2014  
**To:** Honorable Board of Supervisors  
**From:** Louise Steenkamp, Director and AOD Administrator

**Re: Requested Response to the 2013-2014 Grand Jury Report**

---

Please accept this letter as my response to the 2013-2014 Grand Jury Report pursuant to Penal Code section 933.05 of the California Penal Code. The Grand Jury requested that the Director of Alcohol and Other Drug Services (AOD) respond to Findings 1-5 and Recommendations 1-6. I am pleased to provide the following responses:

## **FINDINGS**

***F1 The Alcohol and Other Drug Services Department has a lack of sufficient personnel resources to effectively handle case load and public outreach.***

### **RESPONSE TO F1**

The Director agrees with this finding. During the Grand Jury's interview period, 2 Substance Use Disorders Specialists were on board, one serving as Acting Director. There was an unsuccessful recruitment for a Clinical Supervisor mainly due to the licensure requirement. Since then, a new job description was created that meets SAMHSA's supervision criteria, requires a Master's level in education, and Registered Addiction Specialist certification but not Licensure. The job description is currently making its way through Human Resources.

Public outreach is a focus of the new Director, hired in February 2014, and the new Prevention Coordinator, hired in July 2014. The AOD website and Facebook page were launched in August and social media are used to reach FRC and PUSD students. Outreach is achieved through the Friday Night Live program through community and school-based activities. AOD staff is meeting students and families at FRC orientations and PUSD Back 2 School nights in all communities. AOD is also doing public outreach through free trainings including Cultural Competency, Screening and Brief Intervention, Suicide Prevention, and Substance Use Trends among Youth. The Prevention Coordinator will have an ongoing presence at school sites and the college campus.

***F2 While the Alcohol and Other Drug Services Department has a good working relationship with the Office of Probation, there is insufficient coordination and communication between AOD and other governing agencies.***

### **RESPONSE TO F2**

The Director agrees with this finding. Only two treatment counselors were employed in the AOD department and one was Acting Director. Fiscal and prevention functions were under the Public Health Agency on an interim basis. In February 2014, the Director was hired, and, in July 2014, a fiscal officer and a prevention coordinator were hired. With needed staff on board, coordination and communication is improving. The Director has ongoing communications with the Judge, District Attorney, Sheriff, California Highway Police, Probation Chief, Alternative

Sentencing Coordinator, Mental Health Director, Public Health Director, Plumas District Hospital, and Social Services Director. Regular meetings include the Community Corrections Partnership, Juvenile Justice Commission, Mental Health Commission, Management Council, School Board, and Health and Human Services Cabinet. Treatment Counselors meet at least weekly with criminal justice partners. As of June 2014, an AOD counselor has co-located at the Day Reporting Center to facilitate individual and group counseling. 80% of consumers receiving substance use treatment are involved in the criminal justice system.

***F3 Competitive turf wars among agencies that serve individuals with alcohol and drug issues have created obstacles to creating an integrated behavioral health services model therefore inhibiting their ability to serve these clients.***

#### **RESPONSE TO F3**

The Director agrees with this finding. There are vast system changes underway that support the integrated behavioral health delivery model. The State Department of Health Care Services (DHCS) and 95% of California counties have been pro-actively integrating services. In 2011 and 2012, respectively, the State merged the Mental Health and Alcohol and Drug Program. As a result, both Plumas County departments now report to the same State department, Mental Health and Substance Use Disorder Services (MHSUD). Earlier this year, the two directors' associations merged into one association, the County Behavioral Health Directors Association (CBHDA) and the California Institute of Mental Health merged into the California Institute of Behavioral Health (CIBH). In addition, the California DHCS is submitting a waiver to the Centers for Medicare and Medicaid Services (CMS) for an integrated delivery system for services. Legislative changes, implementation of the Affordable Care Act, rising health care costs, and treatment innovations to serve the "whole" individual are some of the driving factors for integration. Effective in 2014, is a new related requirement for a mandatory annual SBIRT (Screening, Brief Intervention and Referral to Treatment) screening for all Medi-Cal patients. It can be done in a primary care clinic or a mental health clinic. More than 75% of AOD consumers have a co-occurring mental health and substance abuse diagnosis and would benefit from an integrated model.

***F4 It is dangerous, and potentially life threatening, to have Correctional Officers overseeing individuals withdrawing from alcohol and other drugs at the County Jail rather than in a medical detoxification facility.***

#### **RESPONSE TO F4**

The Director agrees with this finding. AOD is successfully coordinating alcohol detox services

with physicians and nurses at Plumas District Hospital and Eastern Plumas Health Care prior to a client's admission to a residential treatment facility. For other substances, AOD has contracts with detox treatment facilities in Reno, Redding, and Grass Valley.

***F5 The Grand Jury finds that the Alcohol and Other Drug Services Department closure for three years and fluctuating Directors (3 in three years) has made it difficult to maintain consistent treatment services and thus resulted in a negative public image.***

#### **RESPONSE TO F5**

The Director agrees with this finding. However, in the past year, more than 210 clients were served for assessments, individual and group counseling, and residential treatment. This total includes 92 current clients (2 in residential facilities) and 120 clients that were discharged (clients are discharged after 30 days of not receiving services). Self-referrals and general population referrals increased in recent months and correspond to a leveling off of criminal justice referrals that made up the majority of the treatment caseload last year. Criminal justice clients demand more counselor involvement in partner coordination and meetings, court attendance, transportation and ancillary services in addition to individual and group counseling. In the past year, counselors carried an average case load of 45 clients and worked hard to avoid a wait list. The consistent demand for services and positive results from June 2014 client surveys indicate an overturn of a previous negative public image.

#### **RECOMMENDATIONS**

***R1 The Grand Jury recommends that the Alcohol and Other Drug Services Department hire one more Substance Abuse Counselor and a Case Manager. The money could come from Federal Grants assisting rural counties in substance abuse treatment programs.***

#### **RESPONSE TO R1**

The Director agrees with this recommendation. The 2014-15 position allocation includes a Substance Use Disorders Specialist III to take on the role of treatment supervisor and carry a partial case load. Virtually all the funding AOD receives is from Federal sources, excluding DUI Fines, and no Plumas County General Funds. AOD shares 2/3 of the Realignment Funds with the Alternative Sentencing Program (\$90,000) and the Office of Probation (\$20,000) to support staffing, testing, and supplies. The AOD Director has agreed to provide this "bridge funding" to ASP until grant funds are secured and to Probation on a transition basis. By next fiscal year, the intent is to use the Realignment Funds "in-house" by AOD to support a Case Manager and a Chart Compliance Clerk. The AOD Director is pursuing Drug Medical certification and

implementation of a Sliding Fee Schedule for Services to generate revenues to sustain additional staffing costs.

***R2 The Grand Jury recommends that AOD be integrated into a Behavioral Health Services Model.***

#### **RESPONSE TO R2**

The Director agrees with this recommendation. Modoc, Trinity, Siskiyou, Shasta, Butte, Yuba, Lake, Humboldt, Mendocino, Marin and most other counties have an integrated model for Behavioral Health, Human Services or Health and Human Services. Modoc's program has evolved into an integrated system with central intake, referral, data collection and fiscal services. Trinity, Butte and Yuba also have centralized reception, intake, referral, fiscal, and an outcomes data base. Federal, State, and member organizations have also merged and there is discussion that future funding also reflect behavioral health needs. It is critical for Plumas partners to proactively plan now for integrated services to improve health outcomes for county residents and reduce costs.

***R3 The Grand Jury recommends that program Directors meet monthly with the AOD Director to come up with a unified vision and strategize how to improve communication and coordination of entities serving the alcohol and other substance abuse population. The monthly meetings would include a designated point person from the Board of Supervisors, Plumas District Hospital, The Sheriff's Office, the Alternative Sentencing Program, and the Office of Probation.***

#### **RESPONSE TO R3**

The Director agrees with this recommendation. Many agencies are meeting monthly in the Community Corrections Partnership and the Mental Health Commission. While it is challenging to meet monthly with hospital partners, hospital representatives are involved in the development of a crisis intervention team along with representatives from other partner agencies.

***R4 The Grand Jury recommends that AOD and Plumas District Hospital administrators get together and come up with a plan to transport intoxicated individuals who are willing to go to a medical detoxification facility rather than the County Jail.***

#### **RESPONSE TO R4**

The Director agrees with this recommendation. This plan is already in practice for alcohol detoxification. Plumas District Hospital and Eastern Plumas Health Care medical staff are doing medically-monitored alcohol detox services prior to an AOD client's transportation to a residential treatment facility. AOD provides transportation services as needed for all clients. For other substances, AOD transports clients to detox facilities outside the county and pays for treatment.

***R5 The Grand Jury recommends that AOD immediately launch a public relations campaign to repair its public image and increase its profile.***

#### **RESPONSE TO R5**

The Director agrees with this recommendation. As described in F1 and F5, public relations activities are ongoing by the Director, Prevention Coordinator, and AOD Counselors through trainings, presentations, and committees. The department will have a presence in social media including Facebook, the county website, the FRC website, and the statewide Friday Night Live website, and various links to other programs. Newspaper and radio campaigns will also be developed along with flyers and brochures.

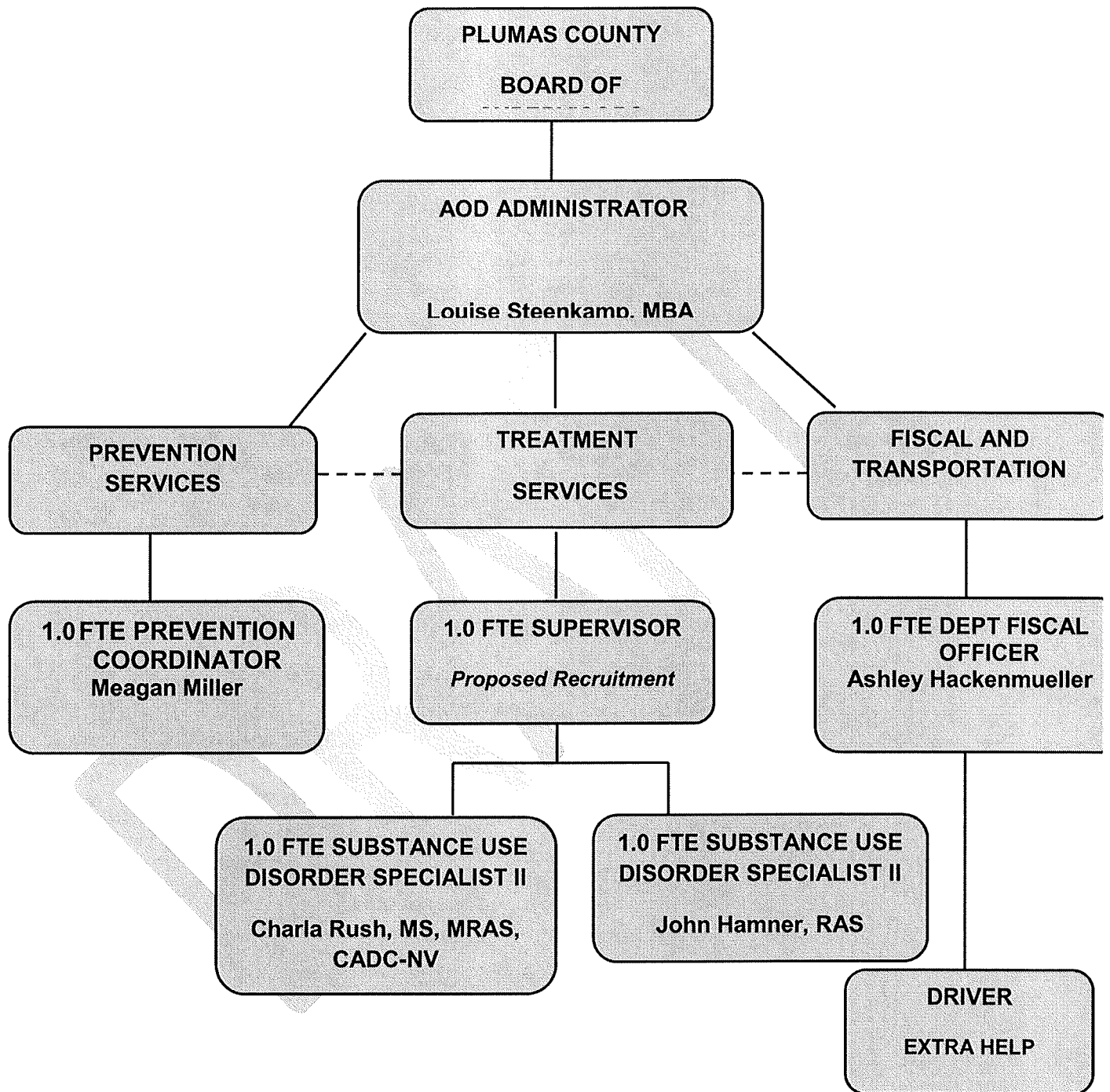
***R6 The Grand Jury recommends that at least one person be delegated from the Board of Supervisors to assist the new Director in revamping AOD.***

#### **RESPONSE TO R6**

The Director agrees with this recommendation and will raise this recommendation with the Board of Supervisors for guidance.



## AOD Organization Chart





## PLUMAS COUNTY PROBATION DEPARTMENT

DAN PRINCE, CHIEF PROBATION OFFICER

**Date:** August 22, 2014

**To:** Jon Kennedy, Chair,  
Plumas County Board of Supervisors

**From:** Dan Prince, Chief Probation Officer

**Subject:** Probation Department Response to 2014 Plumas County Grand Jury Report

**FINDING F3:** Competitive turf wars among agencies that serve individuals with alcohol and drug issues have created obstacles top creating an integrated behavioral health services model therefore inhibiting their ability to serve these clients.

**RESPONSE:** The recently appointed Chief Probation Officer is committed to developing and reinforcing active and constructive partnerships with agencies that serve individuals experiencing problems with alcohol and drugs. There are a number of clients mutually served through Probation, the Alcohol and Drug Department and the Day Reporting Center, which is part of the District Attorney's Alternative Sentencing Program. The Chief Probation Officer is engaged in regular meetings with the Director of Alcohol and Drugs, and the two Departments recently completed a joint effort to increase the frequency of testing of individuals participating in Drug Court and the Proposition 36 Program. Both Departments are in turn working closely with the Alternative Sentencing Program staff to strengthen working relationships and resolve in a constructive manner areas of concern. The newly hired Supervising Probation Officer has been given the responsibility to participate in and assess weekly Drug Court staffings and related activities as part of an overall effort to promote a team oriented approach to service delivery.

## **PLUMAS COUNTY MENTAL HEALTH SERVICES CHALLENGES AND CHANGES**

### **FINDINGS**

**F1 The Plumas County Grand Jury finds that the Plumas County Mental Health Department has insufficient personnel to effectively handle case load and public outreach.**

*The Plumas County Board of Supervisors agreed with this finding.*

**F2 Plumas County Mental Health Services should consider changing how it is structured from a stand-alone service to an integrated service under the Behavioral Health Model to be able to best serve Plumas County.**

*The Plumas County Board of Supervisors agreed with this finding.*

**F3 Plumas County Mental Health Services' current process of evaluating the new Telepsych program needs improvement.**

*The Plumas County Board of Supervisors agreed with this finding.*

**F4 Plumas County Mental Health Services needs to improve communication and build trust with the Plumas County Sheriff's Department in regard to management and coordination of 5150 individuals.**

*The Plumas County Board of Supervisors agreed with this finding.*

**F5 The Plumas County Mental Health Department needs to continue improving communication with the Board of Supervisors in order to head off future problems in PCMH.**

*The Plumas County Board of Supervisors agreed with this finding.*

**F6 The Plumas County Grand Jury finds that the Plumas County Mental Health Department has a poor public image.**

*The Plumas County Board of Supervisors agreed with this finding.*

## RECOMMENDATIONS

**R1 The Plumas County Grand Jury recommends that the County hire a sufficient number of Clinicians and/or Therapists to cover the case load to be funded from the current operating budget. The county should consider recruiting from the northern California universities and take interns into the system. It is recommended that there be the consideration of tiered Therapist salaries to attract job applicants, Therapist 1, Therapist 2, and Therapist 3, having the increasing job requirements attached.**

*The Plumas County Board of Supervisors agreed with this recommendation and has already issued direction for a MFT III Job Description with the County HR Department. Some interns are currently employed at Mental Health.*

**R2 The Plumas County Grand Jury recommends Plumas County Mental Health Services continues to working with an alignment with other services under the Behavioral Health Model by the end of 2014.**

*The Plumas County Board of Supervisors agreed with this recommendation, but disagrees with the timeline. Other counties (like Modoc County) have taken up to three years to align services into Behavior Health Model . Plumas County will work to achieve this model as soon as possible with it being done in the most responsible manner to make sure it is done correctly with guidance from experts.*

**R3 The Plumas County Grand Jury recommends Plumas County Mental Health Services create a new evaluation process for Telepsych that reflects the experiences of each user.**

*The Plumas County Board of Supervisors agreed with this recommendation.*

**R4 The Plumas County Grand Jury recommends that the Plumas County Mental Health Services implement measures to increase trust and communication by creating mental health and HIPAA training with the Sheriff's Department and re-examine the 5150 hospitalization and release procedure.**

*The Plumas County Board of Supervisors agreed with this recommendation.*

**R5 The Plumas County Mental Health Department needs to continue improving communication with the BOS to make the department a stable, dependable department that the Plumas County citizens can rely upon.**

*The Plumas County Board of Supervisors agreed with this recommendation.*

**R6 The Grand Jury recommends that the Mental Health Department immediately launch a public relations campaign to repair its public image and increase its profile.**

*The Plumas County Board of Supervisors agreed with this recommendation.*

# **PLUMAS COUNTY MENTAL HEALTH RESPONSE TO THE 2013-2014 GRAND JURY REPORT**

Plumas County Mental Health (PCMH) has been asked to respond to the Findings and Recommendations of the Plumas County Grand Jury (2013 – 2014) Report. The following responses are provided by the Director of Mental Health.

## **FINDINGS**

***F1 The Plumas County Grand Jury finds that the Plumas County Mental Health Department has insufficient personnel to effectively handle case load and public outreach.***

The Department is in agreement with this finding.

***F2 Plumas County Mental Health Services should consider changing how it is structured from a stand-alone service to an integrated service under the Behavioral Health Model to be able to best serve Plumas County.***

The Board of Supervisors has indicated a possible movement in the direction of creating a Behavioral Health model, and the Director has pledged to be at the table for discussions and consideration of such an undertaking. Caution and prudent planning should be exercised in any such effort to move to a Behavioral Health model.

***F3 Plumas County Mental Health Services' current process of evaluating the new Telepsych program needs improvement.***

The Department notes that the current process of evaluating the Telepsych can be improved.

***F4 Plumas County Mental Health Services needs to improve communication and build trust with the Plumas County Sheriff's Department in regard to management and coordination of 5150 individuals.***

This process has been underway for a number of months and the Department awaits additional opportunities that community leaders are spearheading to address 5150 issues with law enforcement, local hospitals, and the Alcohol and Drug Department.

***F5 The Plumas County Mental Health Department needs to continue improving communication with the Board of Supervisors in order to head off future problems in PCMH.***

The Department agrees that communication with the Board of Supervisors is important and that ongoing improvements will be beneficial.

***F6 The Plumas County Grand Jury finds that the Plumas County Mental Health Department has a poor public image.***

The Department is in agreement with this finding.

## **RECOMMENDATIONS**

***R1 The Plumas County Grand Jury recommends that the County hire a sufficient number of Clinicians and/or Therapists to cover the case load to be funded from the current operating budget. The county should consider recruiting from the northern California universities and take interns into the system. It is recommended that there be the consideration of tiered Therapist salaries to attract job applicants, Therapist 1, Therapist 2, and Therapist 3, having the increasing job requirements attached.***

Mental Health has an ongoing effort to recruit therapists. Applications from qualified individuals have been few and far between over the last 11 months, resulting in only two hiring's and one inner-departmental transfer. The Department has been in the process of requesting that the Board of Supervisors authorize additional therapist positions to meet current demand. The Department is also seeking a salary adjustment for licensed positions so that salaries become competitive which should increase the ability to actually hire and retain clinicians. The Department already has two academic interns who are completing MSW degrees through Chico State University. Addition of a Therapist III position is under consideration. However, given that the Department currently has difficulty in attracting candidates in either level of the existing therapist job classifications, an even higher classification level will not likely result in additional hiring's. A salary adjustment will make all levels of the Therapist job classifications more competitive on a state-wide basis, and is perceived to be the greatest factor that will contribute to improvement in recruitment and retention efforts.

***R2 The Plumas County Grand Jury recommends Plumas County Mental Health Services continues to working toward an alignment with other services under the Behavioral Health Model by the end of 2014.***

The Board of Supervisors has indicated a possible movement in the direction of creating a Behavioral Health model, and the Director has pledged to be at the table for discussions and consideration of such an undertaking.

***R3 The Plumas County Grand Jury recommends Plumas County Mental Health Services create a new evaluation process for Telepsych that reflects the experiences of each user.***

The Department is in the process of creating a Performance Improvement Project (PIP) focused on the new Telepsychiatry program, with an emphasis on evaluation of access issues and client satisfaction.

***R4 The Plumas County Grand Jury recommends that the Plumas County***

***Mental Health Services implement measures to increase trust and communication by creating mental health and HIPAA trainings with the Sheriff's Department and re-examine the 5150 hospitalization and release procedure.***

As stated in the response to Finding F5, the Department's intention to move forward with this process has been underway for a number of months. The Department awaits participation in additional opportunities that community leaders are spearheading to address 5150 issues with law enforcement, local hospitals, and the Alcohol and Drug Department. It is the Department's position that input from client and client-family stakeholders should also be included in this effort.

***R5 The Plumas County Mental Health Department needs to continue improving communication with the BOS to make the department a stable, dependable department that the Plumas County citizens can rely upon.***

The Department is making an ongoing effort to increase communication with the Board of Supervisors and it welcomes the recently agreed upon increased communication from the Board to the Department. While communication with the Board is important, stability and dependability of the Department will rely more on its ability to hire and retain therapists, and thus meet the current demand for services.

***R6 The Grand Jury recommends that the Mental Health Department immediately launch a public relations campaign to repair its public image and increase its profile.***

The Department is making strides toward developing ways in which increased communications with the Board of Supervisors and the general public can provide a better understanding and appreciation of the activities of the Department. It is expected that implementation of the 3-Year MHSA planning process will provide the opportunity for the Department to be in communication with all segments of the community and will serve as the beginning of a regular and ongoing two-way communication process with the citizens of Plumas County

## **PLUMAS COUNTY JAIL INSPECTION**

### **RECOMMENDATIONS**

**R1 The County Board of Supervisors and the Sheriff need to make it a priority to continue to explore and secure funding for a new state-of-the-art jail facility which is consistent with newer facilities which provide for increased community security and Officer and inmate safety.**

*The Plumas County Board of Supervisors agreed with this recommendation.*

**R2 During the interim of providing a new facility, there are certain lower cost improvements that should be funded to strengthen the safety and security of the existing facility. Some of these improvements cannot be divulged in this record, but funding to replace video equipment and funding to allow staffing of 24 hour monitoring of video surveillance is part of this recommendation.**

*The Plumas County Board of Supervisors agreed with this recommendation.*

**R4 The County should expand the inmate work program to provide increased opportunities through implementation. This includes designating more and varied tasks. This program could be used to construct/install physical security measures at the jail to better protect the facility.**

*The Plumas County Board of Supervisors agreed with this recommendation.*

#### **PLUMAS COUNTY REAL ESTATE ASSETS UNCLEAR**

##### **RECOMMENDATIONS**

**R2 Representatives from the following departments: Public Works, Assessor, Auditor, Treasurer, Facility Services, and the Board of Supervisors should review this comprehensive list for accuracy and ease of use, and approve by December 31, 2014.**

*The Plumas County Board of Supervisors agreed with this recommendation.*

**R3 The location of the completed list should be well-known to all county staff and made readily available to all staff and public (possibly) in hard copy and on the county website).**

*The Plumas County Board of Supervisors agreed with this recommendation.*

**R4 This comprehensive list should be regularly updated at a minimum of once per year.**

*The Plumas County Board of Supervisors agreed with this recommendation.*



**Plumas County Department of Facility Services and Airports**  
**198 Andy's Way Quincy, CA 95971**  
**Dony Sawchuk – Director**  
**(530)283-6299/FAX (530)283-6103**

**RECOMMENDATIONS**

**R1- Facility Services Department should build a comprehensive list of county-owned properties sortable by Supervisorial District and entity/Special District “ownership” to include description/current use, value and condition by September 30, 2014.**

***The Facilities Service Director agrees with this finding. (See attached inventory list at end of draft document).***

**R2 Representatives from the following departments: Public Works, Assessor, Auditor, Treasurer, Facility Services, and the Board of Supervisors should review this comprehensive list for accuracy and ease of use, and approve by December 31, 2014.**

***The Facilities Service Director agrees with this finding.***

**R3 The location of the completed list should be well-known to all county staff and made readily available to all staff and public (possibly) in hard copy and on the county website).**

***The Facilities Service Director agrees with this finding.***

**R4 This comprehensive list should be regularly updated at a minimum of once per year.**

***The Facilities Service Director agrees with this finding.***

**PLUMAS COUNTY**  
**DEPARTMENT OF PUBLIC WORKS**  
1834 EAST MAIN STREET • QUINCY, CA 95971 • (530) 283-6268  
*Robert A. Perreault, Jr., P.E.*                      *Director of Public Works*

**MEMORANDUM**

September 23, 2014

From:            Director of Public Works

Subject:        Public Works Response to Grand Jury Report, 2013 – 2014  
Investigative Report: “Real Estate Assets Unclear,” Pages 23-25, inclusive

To:              Clerk of the Board of Supervisors

Public Works staff has reviewed the above referenced chapter in the 2013-2014 Grand Jury Report.

To the best of staff knowledge, following is a listing of properties that are pertinent to activities conducted by the Department of Public Works, with commentary on property of other jurisdictions that is under the direction of Public Works staff.

**PROPERTY UNDER THE JURISDICTION OF THE  
ROAD DIVISION OF PUBLIC WORKS**

**Part I – Road Functions**

Dist. 1 Maintenance Yard

240 Beckwourth-Genesee Rd.

Beckwourth, CA 96129

Dist. 2 Maintenance Yard

36 Williams Valley Rd.

Greenville, CA 95947

Dist. 3 Maintenance Yard

1033 Main St.

Chester, CA 96020

Page 1 of 4

Public Works Headquarters Administration Bldg., and

Dist. 4 Maintenance Yard, and  
Mechanic Shop

1834 E. Main St.

Quincy, CA 95971

Note: this parcel also accommodates the following activities:

Road Dept. Mix Circle

Plumas County Jail

East Quincy Transfer Station, and

Little League Ball Field

Dist. 5 Maintenance Yard

1091 Maricopa Trail

Graeagle, CA 96103

Note: the legal owner of this parcel is the Graeagle Land & Water Co.

La Porte Maintenance Yard

2020 Church St.

La Porte, CA 95981

Taylorsville Mix Circle

11117 North Valley Road, Taylorsville

APN 004-200-032

Beckwourth Sand House

2092 Rocky Point Road, Beckwourth

APN 025-190-003

Property along Old Ski Hill Rd

(no address assigned)

APN 001-500-002

Intersection of A13 and Peninsula Drive

2202 County Road A13, Lake Almanor

APN 103-140-012

Quincy Pipe Yard

1821 East Main Street, East Quincy

APN 116-121-004

Old Dump Property (near summit of Radio Hill)

Radio Hill Road, Quincy

APN 116-290-032

La Porte Mix Circle  
(no address assigned), La Porte

(no APN assigned) – Activity is permitted via a Special Use Permit through the Plumas National Forest.

Page 2 of 4

## **Part II – Communications Lease Functions**

Radio Hill, 677 Radio Hill Rd, East Quincy 95971

Active Communications Leases, administered by Public Works staff:

Sierra Radio, Inc. & KTOR

Digitalpath, Inc.

Western Inspirational Broadcasters, Inc.

KLOVE

Sierra Broadcasting Corp. Inc.

Immaculate Heart Radio

AT & T

US Cellular

SBA

**PROPERTY UNDER THE JURISDICTION OF THE  
SOLID WASTE DIVISION OF PUBLIC WORKS**

The active Transfer Station sites within the Plumas County Solid Waste Program are:

Chester Transfer Station  
Delleker Transfer Station  
East Quincy Transfer Station

Graeagle Transfer Station  
Greenville Transfer Station  
La Porte Transfer Station

To the best of my knowledge, the County of Plumas is the owner of all building structures at active Transfer Station sites (including the underlying real estate) within the Plumas County Solid Waste Program, with the following exceptions:

1. In addition to the main Transfer Station in Delleker, there is a second building and parcel that is utilized as the IMD Recycling Center. IMD owns both the building and the real estate of the IMD Recycling Center.

2. The County owns the Transfer Station and structures at the Greenville Transfer Station site, but the real estate is owned by the US Forest Service and the Transfer Station activity is permitted by a Special Use Permit, issued by the Plumas National Forest.

3. The County owns the Transfer Station structures at the La Porte Transfer Station site, but the real estate is owned by the US Forest Service and the Transfer Station activity is permitted by a Special Use Permit, issued by the Plumas National Forest.

## **PROPERTY OF OTHER JURISDICTIONS UNDER THE DIRECTION OF PUBLIC WORKS**

Plumas County Flood Control and Water Conservation District: the District presently owns the land and structures of the Lake Davis Water Treatment Plant. However, such real estate is, by agreement, presently in the process of being transferred from the District to the City of Portola.

Public Works is responsible for the maintenance of the Chester Diversion Dam, but such real estate is owned by the Sacramento-San Joaquin Drainage District.

There is a parcel along County Hospital Road in Quincy that is leased for a horse corral. Until recently, rent was paid to Public Works and forwarded to the Auditor for deposit in the general fund.

There is a small parcel, located between the Chester Transfer Station and the OHV Parking Lot, formerly the location of the Sprint Communications Tower that is owned by the general fund. However, any communications lease is administered by Public Works.

The Beckwourth CSA is managed by Public Works. It owns structures, right-of-way and easements associated with the Beckwourth Sewer System.

The Grizzly Ranch CSD is managed by Public Works. It owns structures, right-of-way and easements associated with the GRCSO Sewer System and water system.

The Walker Ranch CSD is managed by Public Works. It owns structures, right-of-way and easements associated with the WRCSO Sewer System and water system.

The Quincy Lighting District is managed by Public Works. It owns lighting structures and easements.

The Crescent Mills Lighting District is managed by Public Works. It owns lighting structures and easements.

Page 4 of 4

#### **PLUMAS COUNTY ELECTIONS PROCESS – A VOTE for CHANGE**

##### **RECOMMENDATIONS**

**R4 Plumas County should consider appropriating the funding to purchase operate and maintain the necessary hardware and software to provide “Printing on Demand” capability by 2016.**

*The Plumas County Board of Supervisors agreed with this recommendation and will work with the Clerk Recorder to get estimates on the cost and implementation of “Printing on Demand” capability for elections.*

#### **PLUMAS COUNTY AUDIT COMMITTEE – Who are they and what do they do?**

##### **RECOMMENDATIONS**



**R1 The Board of Supervisors should revisit the purpose for why they voted to have an Audit Committee and determine the need for such a committee.**

*The Plumas County Board of Supervisors agreed with this recommendation.*

**R2 If the Board of Supervisors determines that an Audit Committee is necessary, one of the committee members (not including the two Grand Jury members) should be designated as the committee lead, and timeframes for convening the committee need to be outlined and scheduled.**

*The Plumas County Board of Supervisors agreed with this recommendation.*

DRAFT

Facilities

APN	DBA	TRA	Situs
001340045000	Service Yard	053035	1013 HIGHWAY 36 CHESTER CA
001340058000	Rogers Field, Chester Airport	053035	1033 HIGHWAY 36 CHESTER CA
001340058000	Rogers Field, Chester Airport	053035	873 MAIN ST CHESTER CA
001340058000	Rogers Field, Chester Airport	053035	1028 HIGHWAY 36 CHESTER CA
001340058000	Rogers Field, Chester Airport	053035	1017 HIGHWAY 36 CHESTER CA
001340058000	Rogers Field, Chester Airport	053035	208 MASSON RD CHESTER CA
001340058000	Rogers Field, Chester Airport	053035	222 MASSON RD CHESTER CA
001340058000	Rogers Field, Chester Airport	053035	234 MASSON RD CHESTER CA
001340058000	Rogers Field, Chester Airport	053035	246 MASSON RD CHESTER CA
001340058000	Rogers Field, Chester Airport	053035	262 MASSON RD CHESTER CA
001340058000	Rogers Field, Chester Airport	053035	288 MASSON RD CHESTER CA
001340058000	Rogers Field, Chester Airport	053035	296 MASSON RD CHESTER CA
001340058000	Rogers Field, Chester Airport	053035	304 MASSON RD CHESTER CA
001340058000	Rogers Field, Chester Airport	053035	312 MASSON RD CHESTER CA
001340058000	Rogers Field, Chester Airport	053035	320 MASSON RD CHESTER CA
001340058000	Rogers Field, Chester Airport	053035	326 MASSON RD CHESTER CA
001340058000	Rogers Field, Chester Airport	053035	332 MASSON RD CHESTER CA
001340058000	Rogers Field, Chester Airport	053035	338 MASSON RD CHESTER CA
001340058000	Rogers Field, Chester Airport	053035	340 MASSON RD CHESTER CA
001340058000	Rogers Field, Chester Airport	053035	356 MASSON RD CHESTER CA
001340058000	Rogers Field, Chester Airport	053035	376 MASSON RD CHESTER CA
001340058000	Rogers Field, Chester Airport	053035	388 MASSON RD CHESTER CA
001340058000	Rogers Field, Chester Airport	053035	402 MASSON RD CHESTER CA
001340058000	Rogers Field, Chester Airport	053035	416 MASSON RD CHESTER CA
001340058000	Rogers Field, Chester Airport	053035	436 MASSON RD CHESTER CA
001340058000	Rogers Field, Chester Airport	053035	444 MASSON RD CHESTER CA
001340058000	Rogers Field, Chester Airport	053035	452 MASSON RD CHESTER CA
001340058000	Rogers Field, Chester Airport	053035	460 MASSON RD CHESTER CA
001340058000	Rogers Field, Chester Airport	053035	468 MASSON RD CHESTER CA
001340058000	Rogers Field, Chester Airport	053035	476 MASSON RD CHESTER CA
001340058000	Rogers Field, Chester Airport	053035	484 MASSON RD CHESTER CA
001340058000	Rogers Field, Chester Airport	053035	496 MASSON RD CHESTER CA
001450013000	Radio Tower	053035	40 COUNTY ROAD 322 LAKE ALMANOR PENINSULA CA
001500002000	Service Yard	053035	CHESTER CA
003056005000	Service Yard	053012	2020 CHURCH ST LA PORTE CA
003057001000	Service Yard	053012	2001 CHURCH ST LA PORTE CA
003057001000	Service Yard	053012	2000 WARREN HILL RD LA PORTE CA
004070005000	Service Yard	053077	36 WILLIAMS VALLEY RD GREENVILLE CA
004200032000	Service Yard	053060	11117 NORTH VALLEY RD TAYLORSVILLE CA
005160029000	Vacant Land	053043	37555 OLD HIGHWAY RD KEDDIE CA
005180019000	Service Yard	053048	39160 HIGHWAY 70 AMERICAN VALLEY CA
005180020000	Public Works	053048	AMERICAN VALLEY
005180021000	Public Works	053048	AMERICAN VALLEY

Facilities

005180022000	Public Works Vacant Land	053048	AMERICAN VALLEY
005180023000	Public Works Vacant Land	053048	AMERICAN VALLEY
005300015000	Radio Hill	053043	677 RADIO HILL RD EAST QUINCY CA
010060034000	Vacant Land	055011	5784 HIGHWAY 49 VINTON CA
010060036000	Vacant Land	055011	5988 HIGHWAY 49 VINTON CA
011110037000	Public Works Vacant Land	053035	CHESTER CA
025050045000	Sport Field	053008	965 LAKE DAVIS RD PORTOLA CA
025110027000	Vacant Land Next to Hwy 70	053197	HWY 70 PORTOLA
025190003000	Service Yard	053142	2092 ROCKY POINT RD BECKWOURTH CA
025190009000	Service Yard	053142	2081 ROCKY POINT RD BECKWOURTH CA
100010013000	Johnson Creek (Future Park)	053035	126 WAGON RD CHESTER CA
100540040000	CHESTER MEMORIAL HALL	053036	225 GAY ST CHESTER CA
100540040000	CHESTER MEMORIAL HALL	053036	224 BRIDGE ST CHESTER CA
100540040000	CHESTER MEMORIAL HALL	053036	174 STONE AVE CHESTER CA
100620020000	Chester Complex	053036	251 E WILLOW ST CHESTER CA
100620020000	Chester Complex	053036	210 FIRST AVE CHESTER CA
100620020000	Chester Complex	053036	200 FIRST AVE CHESTER CA
100620020000	Chester Complex	053036	222 FIRST AVE CHESTER CA
100620020000	Chester Complex	053036	172 FIRST AVE CHESTER CA
100152026000	Facility Services Vacant Land	053036	CHESTER CA
100221001000	Avigation Easement Rogers Field	053035	776 MAIN ST CHESTER CA
100230006000	Chester Park	053036	190 WILLOW ST CHESTER CA
100230010000	Chester Park	053036	190 WILLOW ST CHESTER CA
100291001000	Avigation Easement Rogers Field	053035	797 MAIN ST CHESTER CA
100291001000	Avigation Easement Rogers Field	053035	787 MAIN ST CHESTER CA
100410046000	Rogers Field, Chester Airport	053085	251 CHESTER AIRPORT RD CHESTER CA
100410046000	Rogers Field, Chester Airport	053085	205 MASSON RD CHESTER CA
100410046000	Rogers Field, Chester Airport	053085	215 MASSON RD CHESTER CA
100410046000	Rogers Field, Chester Airport	053085	229 MASSON RD CHESTER CA
100410046000	Rogers Field, Chester Airport	053085	241 MASSON RD CHESTER CA
103140012000	Vacant Land	053151	2202 COUNTY ROAD A13 LAKE ALMANOR PENINSU CA
103440043000	Public Works Vacant Lot	053151	LAKE ALMANOR
104101006000	Road or Easement	053086	COVE ST LAKE ALMANOR
108232001000	Vacant Lot - Residential	053049	308 MAIDU DR LAKE ALMANOR WEST CA
108283004000	Vacant Lot - Residential	053049	296 OSPREY LOOP LAKE ALMANOR WEST CA
110052004000	Vacant Lot	053026	GREENVILLE CA
110061002000	Greenville Public Library	053026	204 NW ANN ST GREENVILLE CA 95947
110062008000	Greenville Townhall / Fire Station	053026	120 BIDWELL ST GREENVILLE CA
110110010000	Sheriff Sub-Station / Courthouse	053026	115 SE ANN ST GREENVILLE CA 95947
110110010000	Sheriff Sub-Station / Courthouse	053026	115 CRESCENT ST GREENVILLE CA
110110017000	Rear of Sheriff Sub-Station / Courthouse	053026	115 CRESCENT ST GREENVILLE CA
110180009000	Vacant Land	053026	GREENVILLE CA
110400009000	FLOOD CONTROL	053026	GREENVILLE CA
111120008000	Creek Bed	053061	CRESCENT MILLS

# Facilities

11120010000	Indian Valley Airport Gravel Runway	053014	1807 STAMPELI LN CRESCENT MILLS CA
11120015000	Indian Valley Airport Gravel Runway	053014	1807 STAMPELI LN CRESCENT MILLS CA
11120018000	Indian Valley Airport Gravel Runway	053014	1807 STAMPELI LN CRESCENT MILLS CA
115011057000	One Stop Permit Center	053047	555 MAIN ST QUINCY CA
115011057000	One Stop Permit Center	053047	1 CRESCENT ST QUINCY CA
115013024000	Child Services	053047	522 LAWRENCE ST QUINCY CA
115023031000	Quincy Public Parking Lot	053047	480 LAWRENCE ST QUINCY CA
115023031000	Quincy Public Parking Lot	053047	466 LAWRENCE ST QUINCY CA
115025015000	Gansner Park	053048	GANSNER PARK
115032017000	Quincy Memorial Hall	053047	274 LAWRENCE ST QUINCY CA
115032017000	Quincy Memorial Hall	053047	64 CHURCH ST QUINCY CA
115053001000	Dame Shirley Plaza	053047	570 MAIN ST QUINCY CA
115059031000	Very Small Easement	053047	W HIGH ST
115061001000	PLUMAS COUNTY COURTHOUSE	053047	520 MAIN ST QUINCY CA
115062013000	Lawry House - Museum	053047	485 JACKSON ST QUINCY CA
115062013000	Lawry House - Museum	053047	60 BRADLEY ST QUINCY CA
115062014000	Quincy Public Library	053047	72 HARBISON AVE QUINCY CA
115062014000	Quincy Public Library	053047	445 JACKSON ST QUINCY CA
115065004000	PLUMAS COUNTY MUSEUM	053047	514 JACKSON ST QUINCY CA
115065005000	PLUMAS COUNTY MUSEUM	053047	510 JACKSON ST QUINCY CA
115065005000	PLUMAS COUNTY MUSEUM	053047	500 JACKSON ST QUINCY CA
115065006000	VARIEL HOME - Museum	053047	137 COBURN ST QUINCY CA
115065024000	PLUMAS COUNTY MUSEUM	053047	137 COBURN ST QUINCY CA 95971
115069011000	Vacant Lot - Residential	053047	264 ODDIE WAY QUINCY CA
115080012000	Vacant Lot - Residential	053047	134 ROCHE AVE QUINCY CA
115130018000	QHS Sport Field Easement Strip	053047	QUINCY
115160027000	GANSNER AIRFIELD & PARK	053047	QUINCY
115160058000	GANSNER AIRFIELD & PARK	053043	330 SPANISH CREEK RD QUINCY CA
115160058000	GANSNER AIRFIELD & PARK	053043	320 SPANISH CREEK RD QUINCY CA
115160058000	GANSNER AIRFIELD & PARK	053043	310 SPANISH CREEK RD QUINCY CA
115160058000	GANSNER AIRFIELD & PARK	053043	300 SPANISH CREEK RD QUINCY CA
115160058000	GANSNER AIRFIELD & PARK	053043	290 SPANISH CREEK RD QUINCY CA
115160058000	GANSNER AIRFIELD & PARK	053043	280 SPANISH CREEK RD QUINCY CA
115160058000	GANSNER AIRFIELD & PARK	053043	260 SPANISH CREEK RD QUINCY CA
115160058000	GANSNER AIRFIELD & PARK	053043	250 SPANISH CREEK RD QUINCY CA
115160058000	GANSNER AIRFIELD & PARK	053043	228 SPANISH CREEK RD QUINCY CA
115160058000	GANSNER AIRFIELD & PARK	053043	214 SPANISH CREEK RD QUINCY CA
115160058000	GANSNER AIRFIELD & PARK	053043	204 SPANISH CREEK RD QUINCY CA
115160058000	GANSNER AIRFIELD & PARK	053043	198 SPANISH CREEK RD QUINCY CA
115160058000	GANSNER AIRFIELD & PARK	053043	192 SPANISH CREEK RD QUINCY CA
115160058000	GANSNER AIRFIELD & PARK	053043	186 SPANISH CREEK RD QUINCY CA
115160058000	GANSNER AIRFIELD & PARK	053043	180 SPANISH CREEK RD QUINCY CA
115160058000	GANSNER AIRFIELD & PARK	053043	172 SPANISH CREEK RD QUINCY CA
115160058000	GANSNER AIRFIELD & PARK	053043	168 SPANISH CREEK RD QUINCY CA

# Facilities

115160058000 GANSNER AIRFIELD & PARK	053043	156 SPANISH CREEK RD QUINCY CA
115160058000 GANSNER AIRFIELD & PARK	053043	150 SPANISH CREEK RD QUINCY CA
115160058000 GANSNER AIRFIELD & PARK	053043	126 SPANISH CREEK RD QUINCY CA
115160058000 GANSNER AIRFIELD & PARK	053043	116 SPANISH CREEK RD QUINCY CA
115160058000 GANSNER AIRFIELD & PARK	053043	114 SPANISH CREEK RD QUINCY CA
115160058000 GANSNER AIRFIELD & PARK	053043	112 SPANISH CREEK RD QUINCY CA
115160058000 GANSNER AIRFIELD & PARK	053043	110 SPANISH CREEK RD QUINCY CA
115160058000 GANSNER AIRFIELD & PARK	053043	108 SPANISH CREEK RD QUINCY CA
115160058000 GANSNER AIRFIELD & PARK	053043	90 SPANISH CREEK RD QUINCY CA
115160058000 GANSNER AIRFIELD & PARK	053043	70 SPANISH CREEK RD QUINCY CA
115160058000 GANSNER AIRFIELD & PARK	053043	39 SPANISH CREEK RD QUINCY CA
115160058000 GANSNER AIRFIELD & PARK	053043	588 CRESCENT ST QUINCY CA
115160058000 GANSNER AIRFIELD & PARK	053043	560 CRESCENT ST QUINCY CA
115160058000 GANSNER AIRFIELD & PARK	053043	550 CRESCENT ST QUINCY CA
115160058000 GANSNER AIRFIELD & PARK	053043	270 GANSNER PARK DR QUINCY CA
115160058000 GANSNER AIRFIELD & PARK	053043	344 SPANISH CREEK RD QUINCY CA
115160058000 GANSNER AIRFIELD & PARK	053043	366 SPANISH CREEK RD QUINCY CA
115160058000 GANSNER AIRFIELD & PARK	053043	378 SPANISH CREEK RD QUINCY CA
115160058000 GANSNER AIRFIELD & PARK	053043	390 SPANISH CREEK RD QUINCY CA
115160058000 GANSNER AIRFIELD & PARK	053043	262 SPANISH CREEK RD QUINCY CA
115160092000 Indian Cemetery	053048	1044 BESKEEN LN QUINCY CA
115160093000 Bike Path	053047	RAILWAY TO QUINCY JUNCTION RD
115180021000 Bike Path	053047	198 RAILWAY AVE QUINCY CA
115180021000 Bike Path	053047	198 ANDY'S WAY QUINCY CA
115180031000 Avigation Easement Gansner Field	053047	501 CRESCENT ST QUINCY CA
115350003000 Health & Human Services Bldg	053183	270 COUNTY HOSPITAL RD QUINCY CA
115350003000 Health & Human Services Bldg	053183	264 COUNTY HOSPITAL RD QUINCY CA
115350003000 Health & Human Services Bldg	053183	260 COUNTY HOSPITAL RD QUINCY CA
115350003000 Health & Human Services Bldg	053183	250 COUNTY HOSPITAL RD QUINCY CA
116010022000 Plumas County Fairgrounds	053010	204 PLUMAS FAIRGROUND RD EAST QUINCY CA
116010022000 Plumas County Fairgrounds	053010	100 PLUMAS FAIRGROUND RD EAST QUINCY CA
116010022000 Plumas County Fairgrounds	053010	150 PLUMAS FAIRGROUND RD EAST QUINCY CA
116010022000 Plumas County Fairgrounds	053010	208 PLUMAS FAIRGROUND RD EAST QUINCY CA
116010022000 Plumas County Fairgrounds	053010	212 PLUMAS FAIRGROUND RD EAST QUINCY CA
116050019000 Vacant Land	053048	QUINCY JUNCTION & LEE RD
116121004000 Public Works Main Office	053010	1821 E MAIN ST EAST QUINCY CA
116171011000 Public Works Main Office	053010	1894 E MAIN ST EAST QUINCY CA
116171011000 Public Works Main Office	053010	11 MILL CREEK RD EAST QUINCY CA
116171011000 Public Works Main Office	053010	1912 E MAIN ST EAST QUINCY CA
116200032000 Vacant Lot - Residential	053010	101 CLOUGH ST EAST QUINCY CA
116290032000 Radio Hill	053010	175 RADIO HILL RD EAST QUINCY CA
116320002000 Old Amory & Baseball Field	053010	125 S REDBERG AVE EAST QUINCY CA
116320002000 Old Amory & Baseball Field	053010	75 S REDBERG AVE EAST QUINCY CA
116320036000 PCSO	053010	1400 E MAIN ST EAST QUINCY CA

# Facilities

116320036000 PCSO	053010	34 SUNRISE LN EAST QUINCY CA
116320050000 Public Works Main Yard	053010	1834 E MAIN ST EAST QUINCY CA
116320050000 Public Works Main Yard	053010	56 ABERNETHY LN EAST QUINCY CA
116320050000 Public Works Main Yard	053010	54 ABERNETHY LN EAST QUINCY CA
116320050000 Public Works Main Yard	053010	50 ABERNETHY LN EAST QUINCY CA
116320050000 Public Works Main Yard	053010	44 ABERNETHY LN EAST QUINCY CA
116320050000 Public Works Main Yard	053010	200 ABERNETHY LN EAST QUINCY CA
116320058000 Former Probation Bldg	053010	1446 E MAIN ST EAST QUINCY CA
116320058000 Former Probation Bldg	053010	15 SUNRISE LN EAST QUINCY CA
116320058000 Former Probation Bldg	053010	41 SUNRISE LN EAST QUINCY CA
117021001000 Sierra House	053130	529 BELL LN EAST QUINCY CA
117021001000 Sierra House	053130	527 BELL LN EAST QUINCY CA
117350038000 Plumas County Animal Shelter	053105	201 MILL CREEK N RD EAST QUINCY CA
117360001000 Vacant Land	053048	1378 QUINCY LA PORTE RD EAST QUINCY CA
120032006000 Old School House - Museum	053055	4390 THOMPSON ST TAYLORSVILLE CA
120075006000 Indian Museum / Grange	053055	4578 MAIN ST TAYLORSVILLE CA
120075006000 Indian Museum / Grange	053055	4288 CEMETERY ST TAYLORSVILLE CA
120120009000 Rodeo / Park / Campground	053004	11735 NORTH VALLEY RD TAYLORSVILLE CA
120120010000 Taylorsville Campground	053060	4872 ARLINGTON RD TAYLORSVILLE CA
122020011000 Vacant Land	053043	HWY 89 & GREENHORN RANCH RD
125109001000 Vacant Land	053071	DELLEKER
125160001000 Vacant Land	001001	DELLEKER
125293001000 Vacant Land	001001	BETWEEN W. QUINCY & WILLOW ST. PORTOLA
125302004000 Portola Memorial Hall	001001	449 W SIERRA AVE PORTOLA CA
125420053000 Service Yard	053114	73981 INDUSTRIAL WAY DELLEKER CA 86122
126131001000 Courthouse & Clinic	001001	171 NEVADA ST PORTOLA CA
126131001000 Courthouse & Clinic	001001	161 NEVADA ST PORTOLA CA
126134015000 Portola Public Library	001001	34 THIRD AVE PORTOLA CA
128010027000 FLOOD CONTROL	053020	1230 GRIZZLY RD GRIZZLY ROAD CA
128010029000 FLOOD CONTROL	053139	1200 GRIZZLY RD GRIZZLY ROAD CA
128010057000 FLOOD CONTROL	053020	1290 GRIZZLY RD GRIZZLY ROAD CA
130020010000 Service Yard	053056	920 BLAIRSDEN GRAEAGLE RD BLAIRSDEN CA
133140032000 Public Works	053052	1737 CLIO STATE 40A RD CLIO CA
140031007000 Vacant Land	053138	216 MAIN ST BECKWOURTH CA
140050001000 Service Yard	053138	148 MAIN ST BECKWOURTH CA
140050001000 Service Yard	053138	240 BECKWOURTH GENESEE RD BECKWOURTH CA
140080014000 Nervino Airport	053141	82335 HIGHWAY 70 BECKWOURTH CA
140080014000 Nervino Airport	053141	82357 HIGHWAY 70 BECKWOURTH CA
140080014000 Nervino Airport	053141	82367 HIGHWAY 70 BECKWOURTH CA
140080014000 Nervino Airport	053141	82405 HIGHWAY 70 BECKWOURTH CA
140080014000 Nervino Airport	053141	82435 HIGHWAY 70 BECKWOURTH CA
140080014000 Nervino Airport	053141	82459 HIGHWAY 70 BECKWOURTH CA
140080014000 Nervino Airport	053141	82481 HIGHWAY 70 BECKWOURTH CA
140080014000 Nervino Airport	053141	82505 HIGHWAY 70 BECKWOURTH CA

Facilities

140080014000 Nervino Airport	053141	82535 HIGHWAY 70 BECKWOURTH CA
140080014000 Nervino Airport	053141	82529 HIGHWAY 70 BECKWOURTH CA
140080014000 Nervino Airport	053141	82561 HIGHWAY 70 BECKWOURTH CA
140080014000 Nervino Airport	053141	82555 HIGHWAY 70 BECKWOURTH CA
140080014000 Nervino Airport	053141	82553 HIGHWAY 70 BECKWOURTH CA
140080014000 Nervino Airport	053141	82589 HIGHWAY 70 BECKWOURTH CA
140080014000 Nervino Airport	053141	82889 HIGHWAY 70 BECKWOURTH CA
140080014000 Nervino Airport	053141	82915 HIGHWAY 70 BECKWOURTH CA
140080014000 Nervino Airport	053141	82601 HIGHWAY 70 BECKWOURTH CA
140080014000 Nervino Airport	053141	548 N INDUSTRIAL WAY BECKWOURTH CA

[illegible]Page 7



Facilities

PLUMAS COUNTY	4		
PLUMAS COUNTY	4		
PLUMAS COUNTY OF	4	1	
PLUMAS COUNTY OF	1	0	
PLUMAS COUNTY OF	1	0	
PLUMAS COUNTY OF	3	39.73	
PLUMAS COUNTY OF	1	8.8	
PLUMAS COUNTY OF	1	4.47	
PLUMAS COUNTY OF	1	1.06	
PLUMAS COUNTY OF	1	1.41	
PLUMAS COUNTY OF	3	1	
PLUMAS COUNTY OF	3	0.92	
PLUMAS COUNTY OF	3	0.92	
PLUMAS COUNTY OF	3	0.92	
PLUMAS COUNTY OF	3	1.53	
PLUMAS COUNTY OF	3	1.53	
PLUMAS COUNTY OF	3	1.53	
PLUMAS COUNTY OF	3	1.53	
PLUMAS COUNTY OF	3	1.53	
PLUMAS COUNTY OF	3		
PLUMAS COUNTY OF	3	0	
PLUMAS COUNTY OF	3	0	
PLUMAS COUNTY OF	3	1.44	
PLUMAS COUNTY OF	3	2.87	
PLUMAS COUNTY OF	3	2.87	
PLUMAS COUNTY OF	3	7.79	
PLUMAS COUNTY OF	3	7.79	
PLUMAS COUNTY OF	3	7.79	
PLUMAS COUNTY OF	3	7.79	
PLUMAS COUNTY OF	3	7.79	
PLUMAS COUNTY OF	3	3	
PLUMAS COUNTY OF ROAD DEPT	3		
PLUMAS COUNTY OF ROAD DEPT	3		
PLUMAS COUNTY OF	3		
PLUMAS COUNTY SERVICE AREA #2	3	0	
PLUMAS COUNTY SERVICE AREA A	3	0.57	
PLUMAS COUNTY OF	2		
PLUMAS COUNTY OF	2	0	
PLUMAS COUNTY TOWN HALL	2	0.15	
PLUMAS COUNTY OF	2	0.13	
PLUMAS COUNTY OF	2	0.13	
PLUMAS COUNTY OF	2	0.14	
PLUMAS COUNTY OF	2		
PLUMAS COUNTY OF	2	1.73	
PLUMAS COUNTY OF	2		

Facilities

PLUMAS COUNTY OF	2	13
PLUMAS COUNTY OF	2	13
PLUMAS COUNTY OF	2	46.97
PLUMAS COUNTY OF	4	0
PLUMAS COUNTY OF	4	0
PLUMAS COUNTY OF	4	0
PLUMAS COUNTY OF	4	0
PLUMAS COUNTY OF	4	0
PLUMAS COUNTY OF	4	0
PLUMAS COUNTY OF	4	0
PLUMAS COUNTY OF	4	0
PLUMAS COUNTY OF	4	0
PLUMAS COUNTY OF	4	0
PLUMAS COUNTY OF	4	1.37
COUNTY OF PLUMAS	4	0
PLUMAS COUNTY OF	4	0.28
PLUMAS COUNTY OF	4	0.28
PLUMAS COUNTY OF	4	0.41
PLUMAS COUNTY OF	4	0.41
PLUMAS COUNTY OF	4	0.03
PLUMAS COUNTY MUSEUM ASSOC	4	0
PLUMAS COUNTY OF	4	0
PLUMAS COUNTY OF	4	0.2
PLUMAS COUNTY MUSEUM ASSOC INC	4	0.08
PLUMAS COUNTY MUSEUM ASSOC INC A CA CORP	4	0
PLUMAS COUNTY OF	4	0.15
PLUMAS COUNTY OF	4	
PLUMAS COUNTY OF	4	
PLUMAS COUNTY OF	4	0
PLUMAS COUNTY OF	4	0
PLUMAS COUNTY OF	4	0
PLUMAS COUNTY OF	4	0
PLUMAS COUNTY OF	4	0
PLUMAS COUNTY OF	4	0
PLUMAS COUNTY OF	4	0
PLUMAS COUNTY OF	4	0
PLUMAS COUNTY OF	4	0
PLUMAS COUNTY OF	4	0
PLUMAS COUNTY OF	4	0
PLUMAS COUNTY OF	4	0
PLUMAS COUNTY OF	4	0
PLUMAS COUNTY OF	4	0
PLUMAS COUNTY OF	4	0
PLUMAS COUNTY OF	4	0
PLUMAS COUNTY OF	4	0
PLUMAS COUNTY OF	4	0
PLUMAS COUNTY OF	4	0
PLUMAS COUNTY OF	4	0
PLUMAS COUNTY OF	4	0
PLUMAS COUNTY OF	4	0
PLUMAS COUNTY OF	4	0



Facilities

PLUMAS COUNTY OF	4	1.97
PLUMAS COUNTY OF	4	13.24
PLUMAS COUNTY OF	4	13.24
PLUMAS COUNTY OF	4	13.24
PLUMAS COUNTY OF	4	13.24
PLUMAS COUNTY OF	4	13.24
PLUMAS COUNTY OF	4	13.24
PLUMAS COUNTY OF	4	0
PLUMAS COUNTY OF	4	0
PLUMAS COUNTY OF	4	0
PLUMAS COUNTY OF	5	0.96
PLUMAS COUNTY OF	5	0.96
COUNTY OF PLUMAS	4	1.5
PLUMAS COUNTY OF	5	0.36
PLUMAS COUNTY OF	2	0.66
PLUMAS COUNTY OF	2	0
PLUMAS COUNTY OF	2	0
PLUMAS COUNTY OF	2	160
PLUMAS COUNTY OF	2	2.5
PLUMAS COUNTY OF	5	15.92
PLUMAS COUNTY OF	1	
PLUMAS COUNTY OF	1	
PLUMAS COUNTY OF	1	0
PLUMAS COUNTY OF	1	2.01
PLUMAS COUNTY OF	1	0
PLUMAS COUNTY OF	1	0
PLUMAS COUNTY OF	1	0
PLUMAS COUNTY FLOOD CONTROL &	1	0
PLUMAS COUNTY FLOOD CONTROL &	1	0
PLUMAS COUNTY FLOOD CONTROL &	1	0
PLUMAS COUNTY OF	5	0
PLUMAS COUNTY OF	5	0
PLUMAS COUNTY OF	1	0
PLUMAS COUNTY OF	1	0
PLUMAS COUNTY OF	1	0
PLUMAS COUNTY OF	1	0
PLUMAS COUNTY OF	1	151.83
PLUMAS COUNTY OF	1	151.83
PLUMAS COUNTY OF	1	151.83
PLUMAS COUNTY OF	1	151.83
PLUMAS COUNTY OF	1	151.83
PLUMAS COUNTY OF	1	151.83
PLUMAS COUNTY OF	1	151.83
PLUMAS COUNTY OF	1	151.83
PLUMAS COUNTY OF	1	151.83

Facilities

PLUMAS COUNTY OF	1	151.83
PLUMAS COUNTY OF	1	151.83
PLUMAS COUNTY OF	1	151.83
PLUMAS COUNTY OF	1	151.83
PLUMAS COUNTY OF	1	151.83
PLUMAS COUNTY OF	1	151.83
PLUMAS COUNTY OF	1	151.83
PLUMAS COUNTY OF	1	151.83
PLUMAS COUNTY OF	1	151.83
PLUMAS COUNTY OF	1	151.83
PLUMAS COUNTY OF	1	151.83