

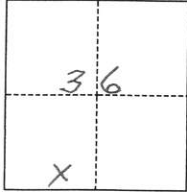
CORNER RECORD

Agency Index

Document Number

455

City of N/A County of Plumas, California
Brief Legal Description Resurvey Lots 64 & 65, Block 1, L.A.C.C. Unit No. 4

CORNER TYPE**COORDINATES (Optional)**

- ☐ Government Corner ☐ Control
☐ Meander ☐ Property
☐ Rancho ☐ Other

N. _____ E. _____

Elevation _____

Units

☐ Metric☒ U.S. Survey Foot

Horizontal Datum _____

Zone _____

Epoch Date _____

Vertical Datum _____

☐ Complies with Public Resources Code §§8801-8819☐ Complies with Public Resources Code §§8890-8902Date of Survey October 10, 2023

#23-03-52

Sec. 36, T. 28 N., R. 7 E., M.D.B. & M.

PLS Act Ref.:

☐ 8765(d)☒ 8771☐ 8773☐ Other:Corner/
Monument:☐ Left as found☐ Established☐ Rebuilt☐ Pre-Construction☐ Found and tagged☒ Reestablished☐ Referenced☐ Post-Construction

Narrative of corner identified and monument as found, set, reset, replaced, or removed:

☒ See sheet #2 for description(s):**SURVEYOR'S STATEMENT**

This Corner Record was prepared by me or under my direction in conformance with

the Professional Land Surveyors' Act on October 10, 2023

Signed

Vernon H. Templeton

P.L.S. or R.C.E. No.

PLS 4647**COUNTY SURVEYOR'S STATEMENT**

This Corner Record was received

10/10/2023

and examined and filed

11/10/23

Signed

R. Tom Skuntz

P.L.S. or R.C.E. No.

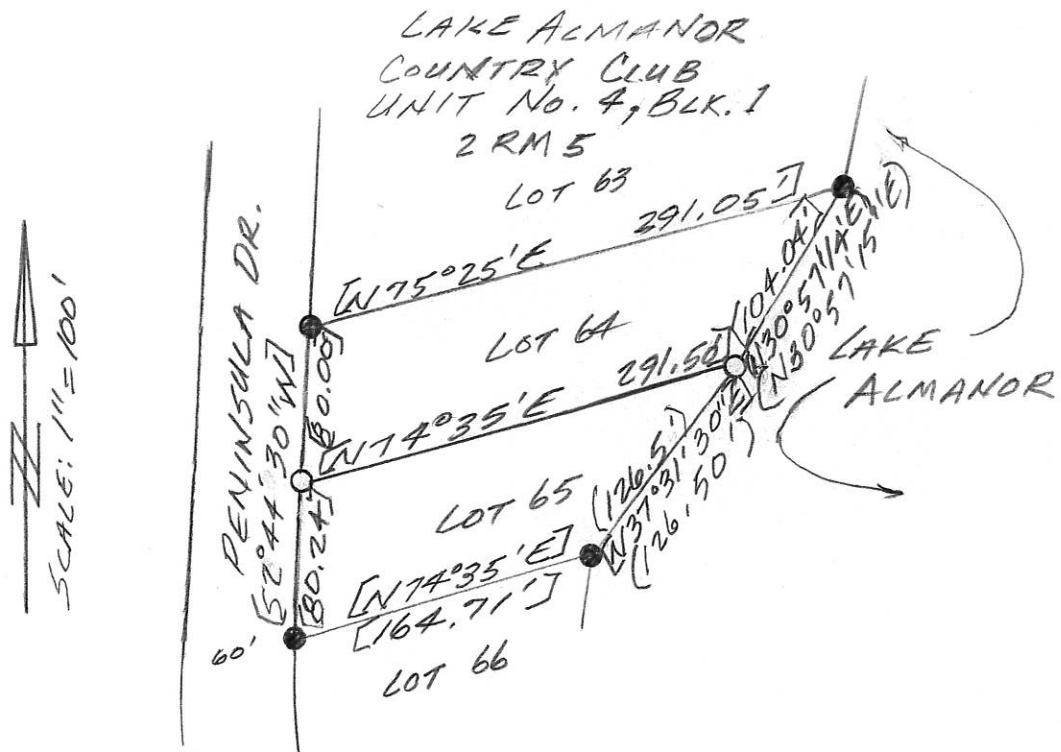
30515

Title

COUNTY SURVEYOR

County Surveyor's Comment





LEGEND

—●— End. 3/4" i.p. tagged L.S. 2322
per 2 R.M. 5.

—○— Set 1/2" rebar w/cap stamped LS 4647.

[] Indicates Record and Measured per 2 M. 5

() Indicates Measured.