

BOARD OF SUPERVISORS
RESOLUTION 2023-8812

2023 SUMMER
PLUMAS COUNTY GENERAL PLAN AMENDMENT
SENECA HEALTHCARE DISTRICT (GPA 8-21/22-01)

WHEREAS, the hearings required by the Government Code of the State of California before the Board of Supervisors were held and proper notices were given; and

WHEREAS, the testimony and evidence received justify the actions taken to amend the General Plan land use designations and zoning and the Board of Supervisors finds that:

- A. Mitigated Negative Declaration 685 was independently reviewed and is applicable and adequate for the Seneca Healthcare District General Plan Amendment (GPA 8-21/22-01), and was adopted by the Board of Supervisors acting as a Responsible Agency under the requirements of the California Environmental Quality Act (CEQA) after a noticed public hearing on June 13, 2023 and after the Lead Agency, Seneca Healthcare District, on May 4, 2023, approved the project and adopted the Mitigated Negative Declaration; and
- B. GPA 8-21/22-01 is consistent with the 2035 Plumas County General Plan for the reasons set forth in Mitigated Negative Declaration 685; and
- C. GPA 8-21/22-01 is consistent with the Goals and Policies of the 2035 Plumas County General Plan; and
- D. The zoning amendments correspond to and are consistent with GPA 8-21/22-01 and serve to implement GPA 8-21/22-01; and
- E. GPA 8-21/22-01 is in the Town of Chester; and
- F. As the project parcels (APN 100-230-028-000 and APN 100-230-029-000) are planned for future development as shown on Figure 9, General Plan Designations and Planning Areas – Almanor, map in the 2035 Plumas County General Plan, GPA 8-21/22-01 is consistent with the Almanor Planning Area goals in the General Plan.

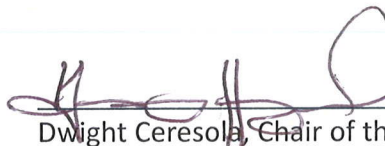
NOW, THEREFORE, BE IT RESOLVED by the Board of Supervisors of the County of Plumas, State of California, that this Board, pursuant to the authority granted by the Government Code of the State of California, amends the General Plan by incorporations of the applicable amendment of the General Plan maps as set forth in Exhibit "A" attached hereto, and made a part hereof.

The foregoing resolution was duly passed and adopted by the Board of Supervisors of the County of Plumas, State of California, at a regular meeting of said Board held on this 13th day of June, 2023, by the following vote:


AYES: Supervisors: Engel, Hagwood, McGowan, Goss

NOES: Supervisors: None

ABSENT: Supervisors: Ceresola


Dwight Ceresola, Chair of the Board of Supervisors

ATTEST:


Heidi White
Clerk of the Board of Supervisors

Approved as to form:

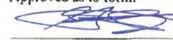

Gretchen Stuhr
Plumas County Counsel

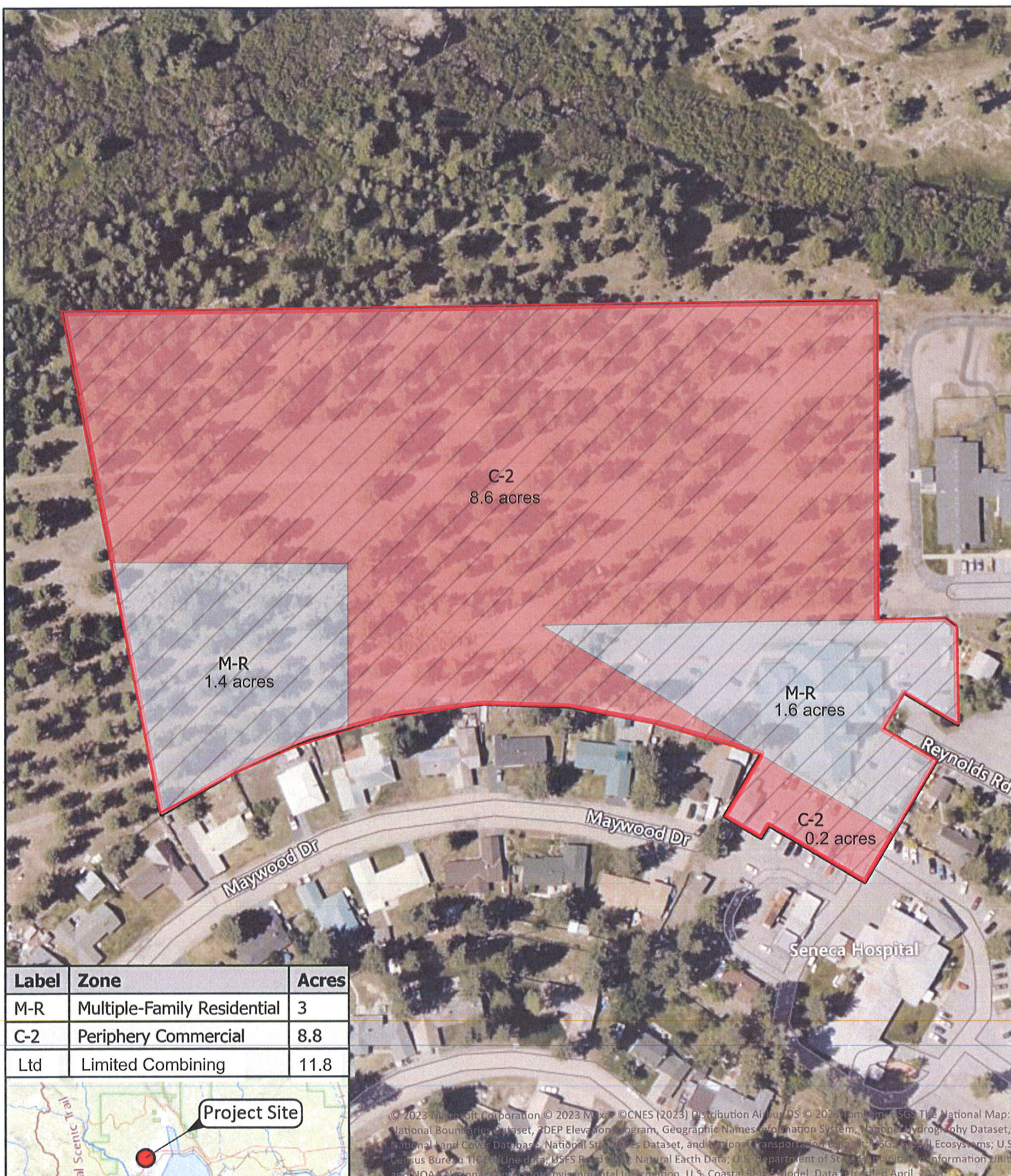
Exhibit "A"

GPA 8-21/22-01

SENECA HEALTHCARE DISTRICT, OWNER

Assessor's Parcel Numbers 100-230-028-000 and 100-230-029-000; 199 Reynolds Road, Town of Chester, unincorporated Plumas County, CA; T28N/R7E/Section 6 and 7, MDM; Lat. 40.307586, Long. -121.235788.

Amend the General Plan land use designations and zoning applied to the properties *from* Resort and Recreation, Rural Residential, Single-Family Residential, Multiple-Family Residential, and Commercial and *from* Single-Family Residential (7-R), Multiple-Family Residential (M-R), Periphery Commercial (C-2), Recreation Open Space (Rec-OS), Rural (R-10), Prime Recreation (Rec-P), and Limited Combining (Ltd) *to* Commercial and Multiple-Family Residential and *to* Periphery Commercial (C-2), Multiple-Family Residential (M-R), and Limited Combining (Ltd).



© 2023 Microsoft Corporation © 2023 Maxar © CNES (2023) Distribution Airbus DS © 2023 ipm inc. SGS The National Map: National Boundaries Dataset, 3DEP Elevation Program, Geographic Names Information System, National Hydrography Dataset, National Land Cover Database, National States and Territories Dataset, and National Transportation Dataset. USGS Animal Ecosystems; U.S. Census Bureau TIGER/Line data; USGS Road Data; Natural Earth Data; U.S. Department of State and Global Information; NOAA National Environmental Information System; U.S. Coastal Relief Model. Data collected April, 2023.

Proposed Project Area
Ltd

0 90 180 360 Feet

0 25 50 100 Meters

N

1:1,800

SEQUOIA
Ecological Consulting, Inc.

Author: NicolasAnderson
 Projection: Lambert Conformal Conic
 Datum: NAD 1983 2011
 Coordinate System: NAD 1983 2011 StatePlane California I FIPS 0401 Ft US