

CORNER RECORD

Agency Index

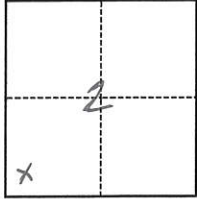
453

Document Number

Town
City of Greenville County of Plumas, California
Brief Legal Description 1 RS 105

CORNER TYPE

COORDINATES (Optional)



- ☐ Government Corner ☐ Control
☐ Meander ☒ Property
☐ Rancho ☐ Other

N. _____ E. _____

Elevation _____

Units

☐ Metric☐ U.S. Survey Foot

Horizontal Datum _____

Zone _____

Epoch Date _____

Vertical Datum _____

☐ Complies with Public Resources Code §§8801-8819☐ Complies with Public Resources Code §§8890-8902Date of Survey MARCH 31st, 2023T. 26 N. R. 9 E., MDB, 1/4 M

PLS Act Ref.:

☐ 8765(d)☒ 8771☐ 8773☐ Other:

Corner/

Monument:

☐ Left as found☐ Established☐ Rebuilt☐ Pre-Construction☐ Found and tagged☒ Reestablished☐ Referenced☐ Post-Construction

Narrative of corner identified and monument as found, set, reset, replaced, or removed:

☐ See sheet #2 for description(s):

SURVEYOR'S STATEMENT

This Corner Record was prepared by me or under my direction in conformance with

the Professional Land Surveyors' Act on

4/25/23

Signed

Vernon H. Templeton

P.L.S. or R.C.E. No.

4647

COUNTY SURVEYOR'S STATEMENT

This Corner Record was received

4/25/23

and examined and filed

5/18/23

Signed

R. Tom Shumaker

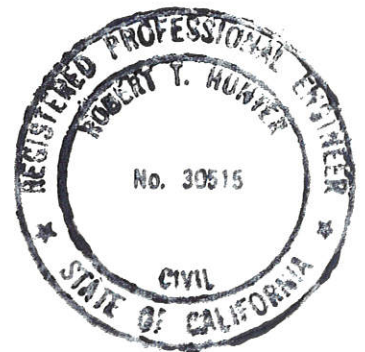
P.L.S. or R.C.E. No.

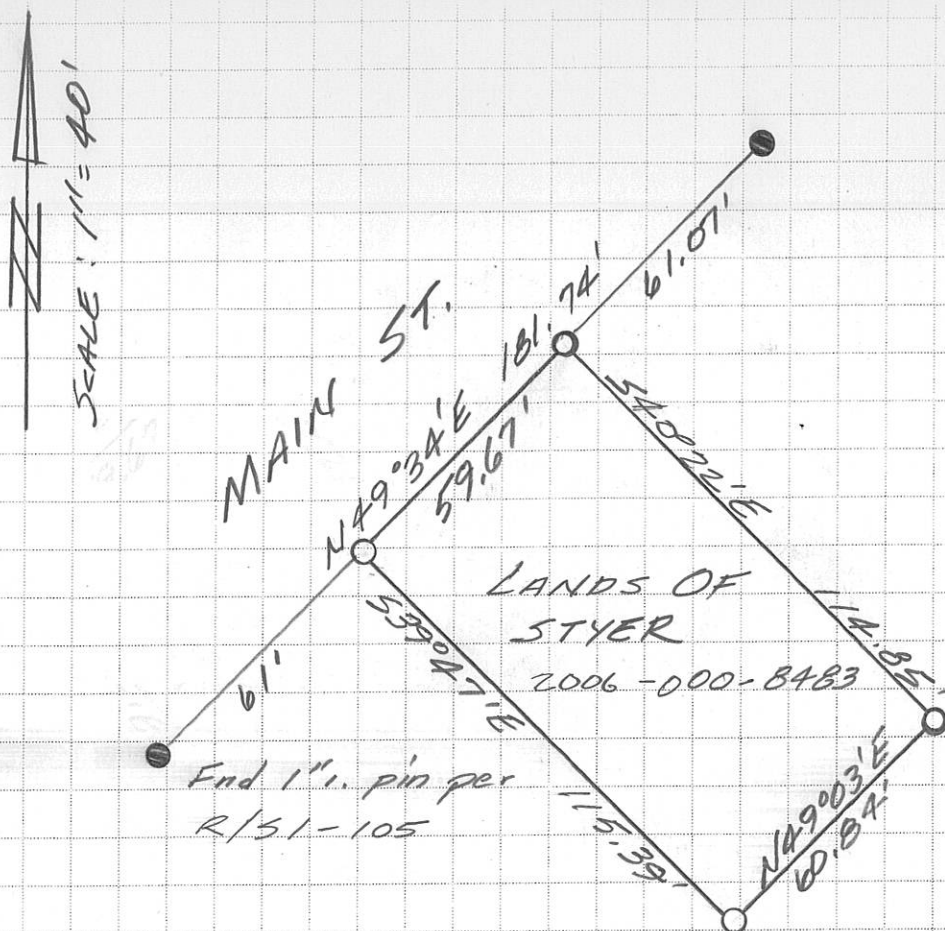
30515

Title

COUNTY SURVEYOR

County Surveyor's Comment





LEGEND

- Found 1/2" i. pipe tagged L.S. 2702 except as noted per R/S 1-105
- Reset 1/2" rebar w/cap stamped L.S. 4647 at location of monuments per R/S 1-105 which was destroyed by fire.

Basis of Bearings is the southerly line of Main St. per R/S 1-105.